

The IBM logo is positioned in the top right corner of the slide. It consists of the letters 'IBM' in a bold, black, sans-serif font, with horizontal stripes through the letters. The background of the slide is a blue-tinted image of a modern building with glass panels and geometric shapes.

Filozofija storitvenih vodil (“service bus”) in sporočilnih posrednikov (“message broker”)



Edo Pavlič, S&T Slovenija

Predstavitev IBM programske opreme za manjša in srednja podjetja

Vsi drugačni, vsi enakopravni

BRAVO!!!
Kralj je car!



Hik




Takole bomo naredili, pa bo za vse najbolje, ker jaz že vem, kaj je za vas najbolje.



Kva ta utruja?
N'č se ne premakne ...
F*#\$%&**



A black and white photograph of a man with dark, wavy hair, wearing a dark jacket over a light-colored collared shirt. He is looking directly at the camera with a neutral expression. The background is a textured, light-colored wall with some faint graffiti, including the word 'RAW' at the top and 'WC' on the right. A white speech bubble is positioned to the left of the man's head, containing the text 'Uf, kaj bi dal za UML, ampak še ne obstaja!'.

Uf, kaj bi dal
za UML,
ampak še ne
obstaja!

Originalna izjava

"So sagst du also, daß die *Übereinstimmung* der Menschen entscheide, was richtig und was falsch ist?"— Richtig und falsch ist, was Menschen *sagen*; und in der *Sprache* stimmen die Menschen überein. Dies ist keine Übereinstimmung der Meinungen, sondern der *Lebensform*.

Ludwig Wittgenstein, Philosophische Untersuchungen, §241

Prevedeno prvič

"So you are saying that human *agreement* decides what is true and what is false?"—It is what human beings *say* that is true and false; and they agree in the *language* they use. That is not agreement in opinions but in *form of life*.

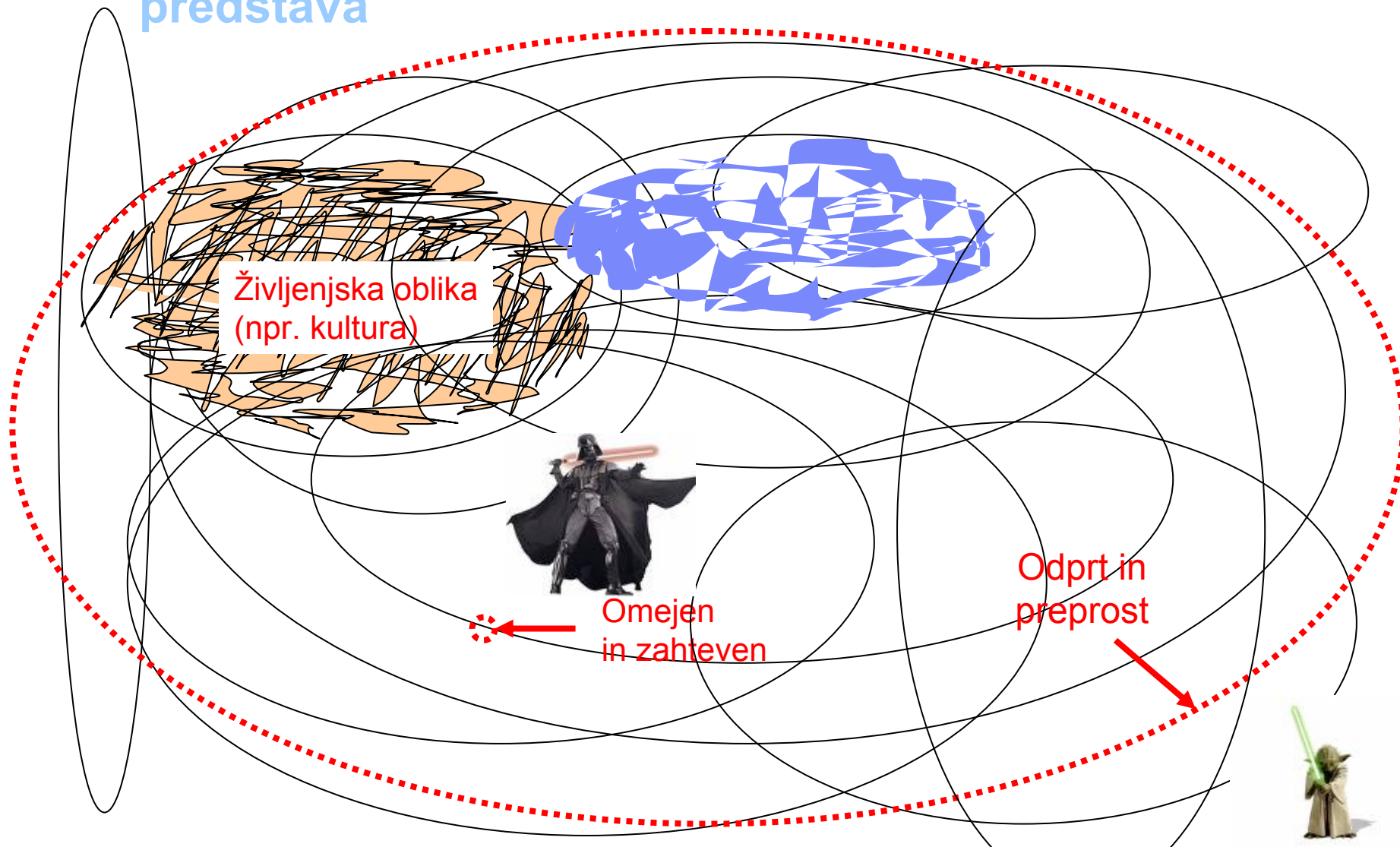
Ludwig Wittgenstein, Philosophical Investigations, §241

Prevedeno drugič

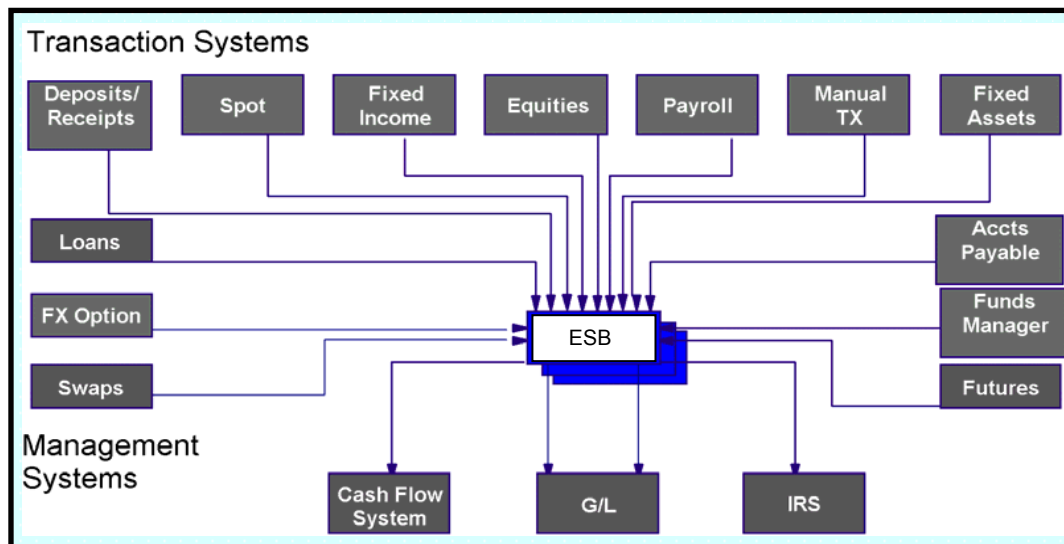
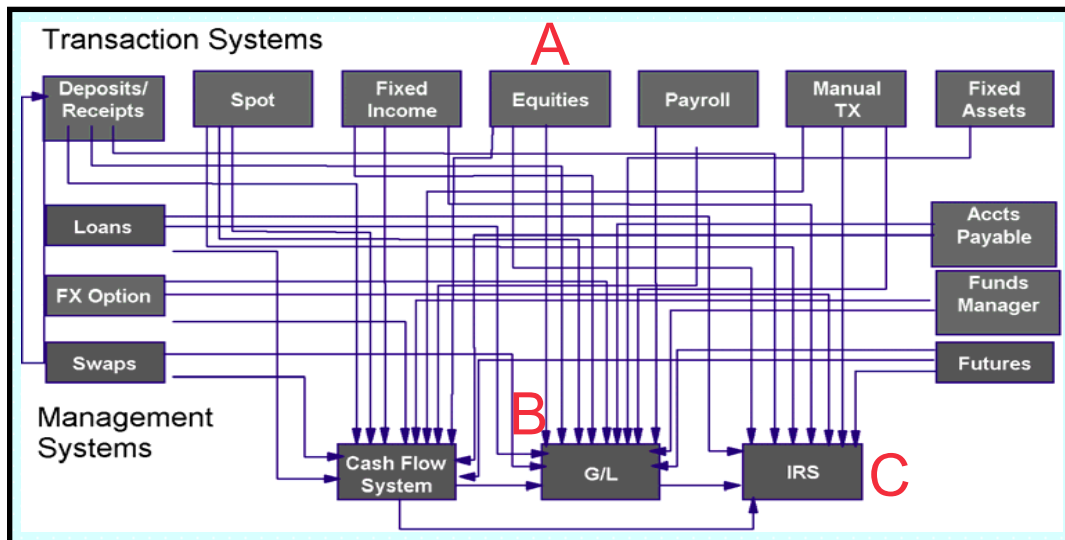
“Torej praviš, da človeško *strinjanje* določa, kaj je res in kaj ne?”—To, kar človeška bitja *pravijo*, da je res ali da ni; in strinjajo se v *jeziku*, katerega uporabljajo. To ni strinjanje med mnenji, ampak znotraj *življenjske oblike*.

Ludwig Wittgenstein, Filozofske raziskave, §241

Življenjske oblike, jezikovne igre in jasna predstava



Življenje pred in po ESB



Kaj je Enterprise Service Bus?

Enterprise Service Bus (ESB) je fleksibilna povezovalna infrastruktura za integracijo aplikacij in storitev.

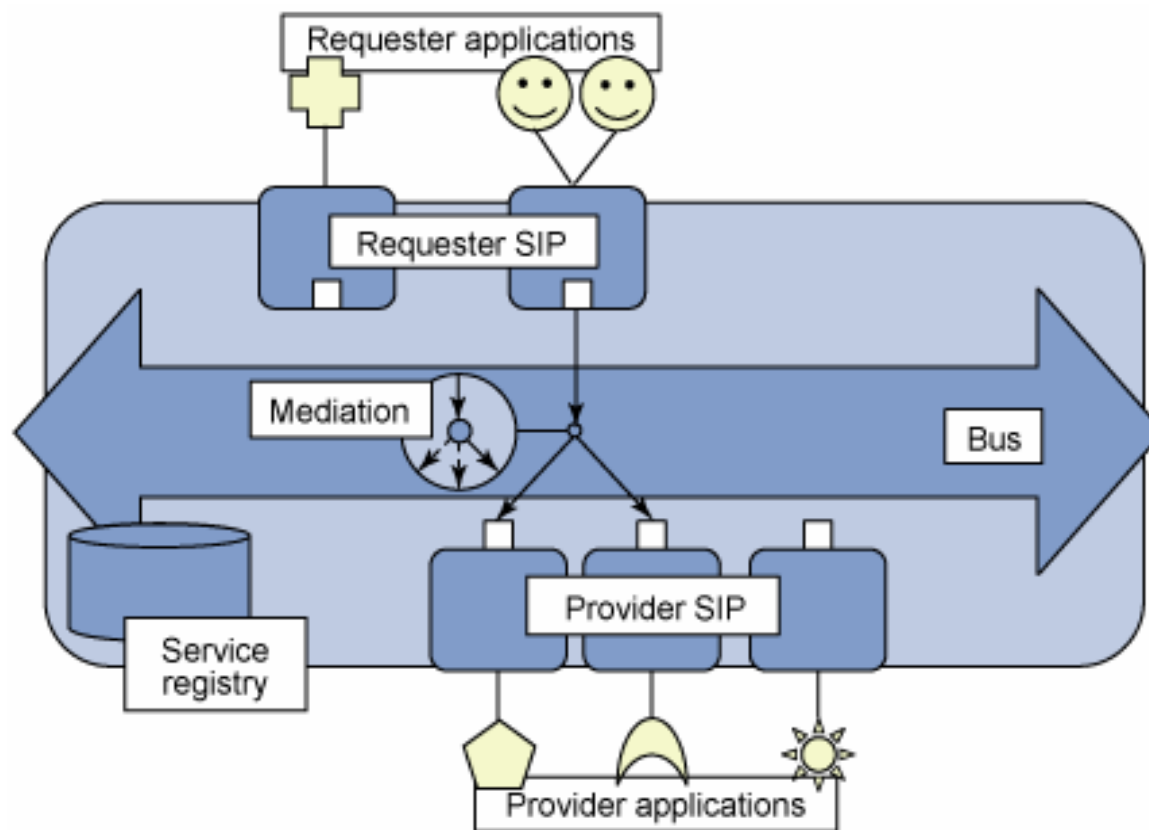
ESB omogoča SOA z zmanjševanjem količine, velikosti in kompleksnosti vmesnikov.

ESB izvaja sledeče:

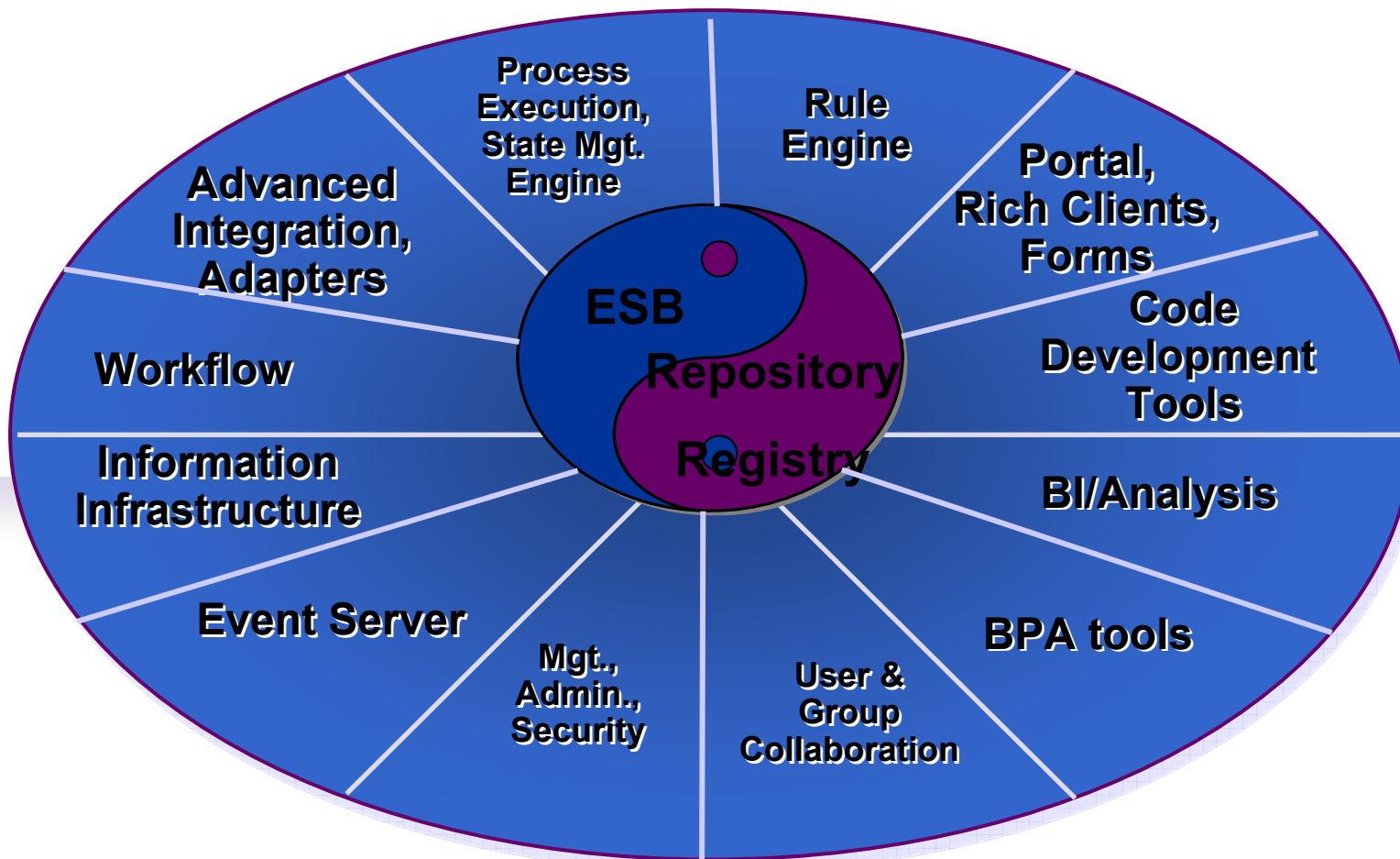
- **USMERJANJE** sporočil med storitvami
- **PRETVARJANJE** transportnih protokolov med zahtevo in storitvijo
- **TRANSFORMACIJA** formatov sporočil med zahtevo in storitvijo
- **UPRAVLJANJE** poslovnih dogodkov iz različnih virov



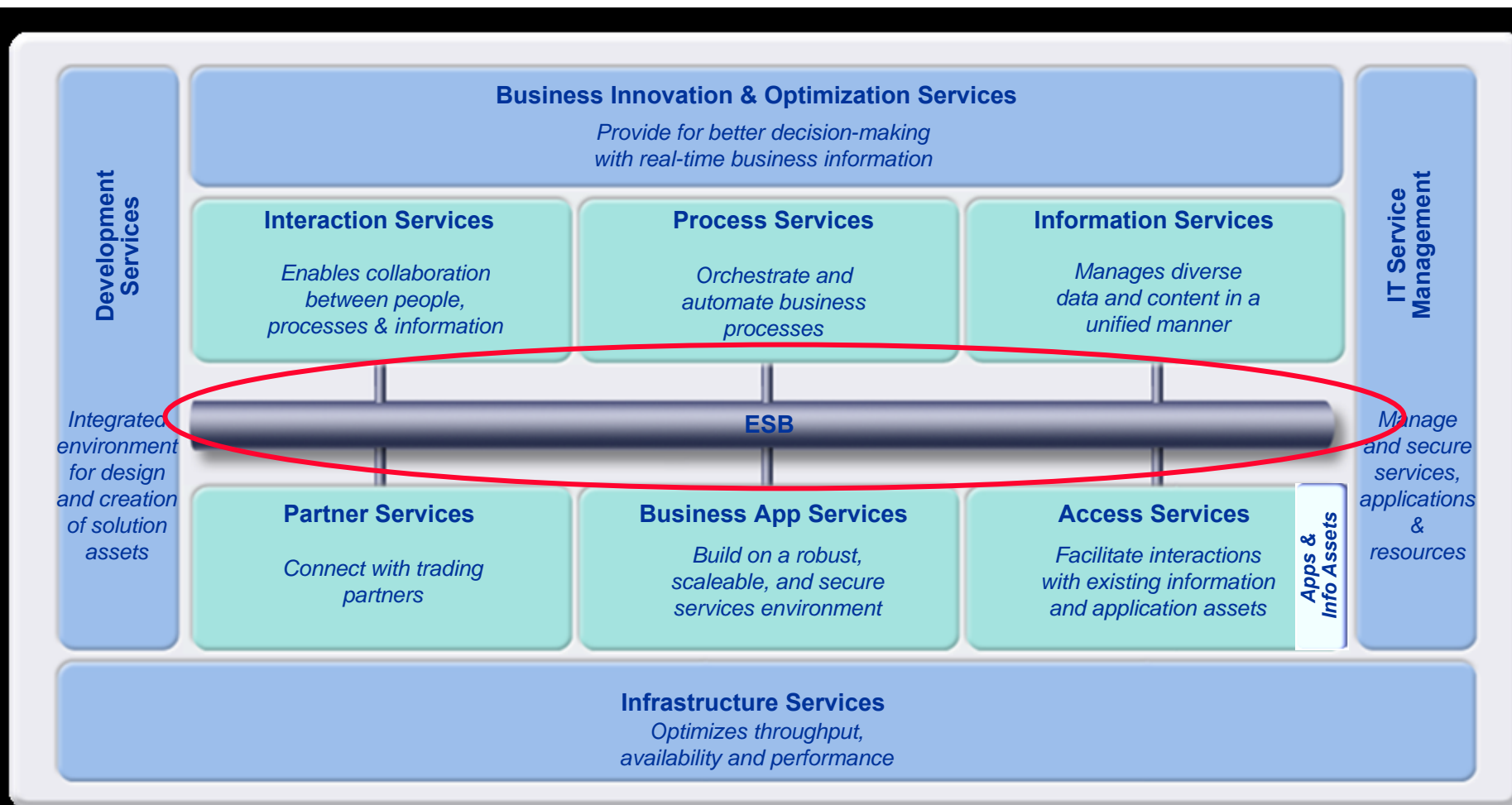
ESB posreduje med različnimi aplikacijami



Center vesolja po Gartnerju

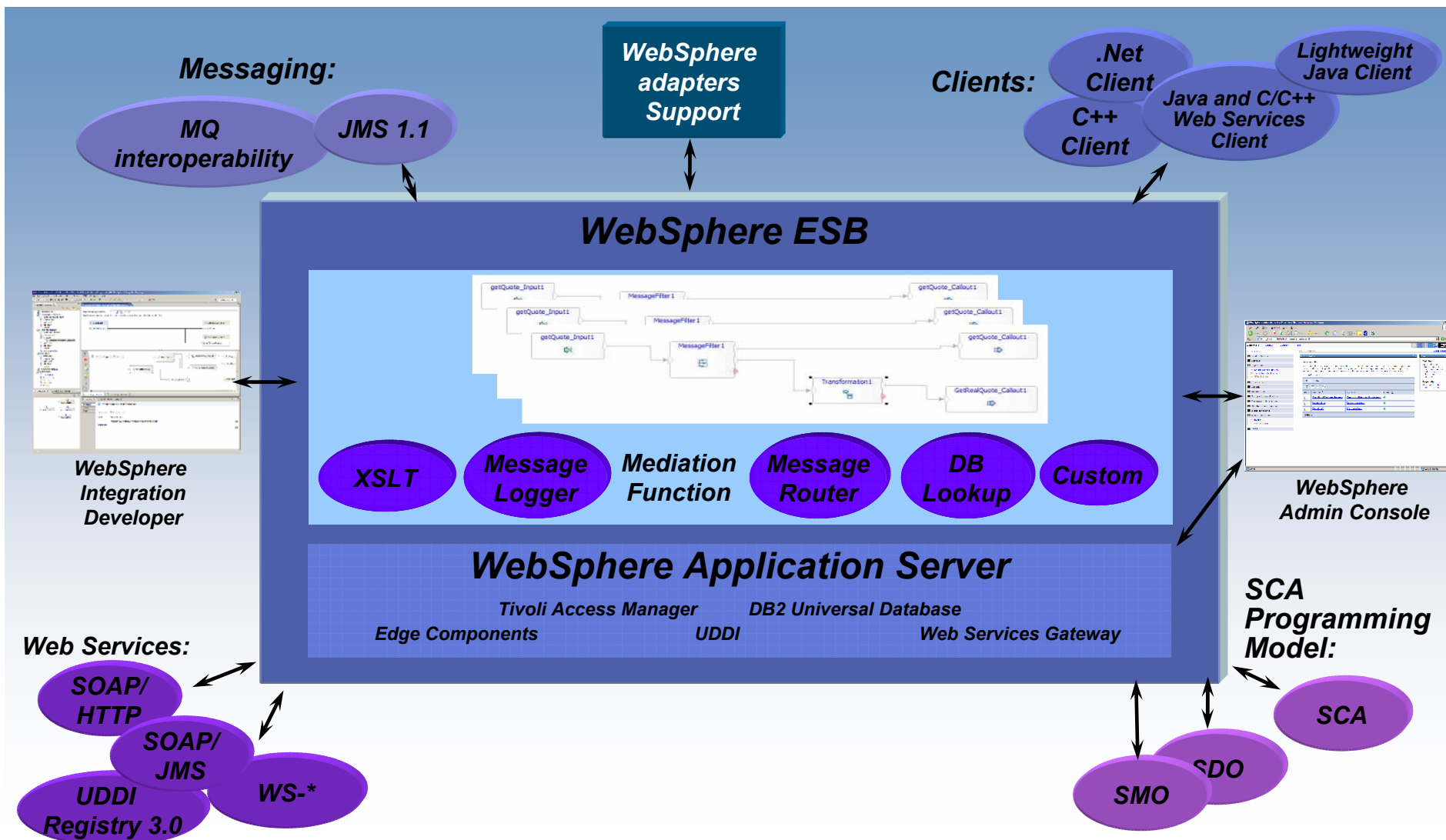


SOA referenčna arhitektura





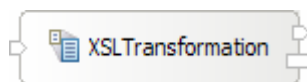
WebSphere ESB: Opis produkta



WebSphere ESB - posredovalni primitivi



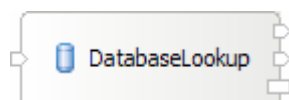
MessageFilter – usmerjanje toka



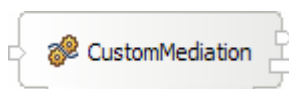
XSLTransformation – transformacija vsebine



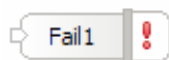
MessageLogger – logiranje v DB



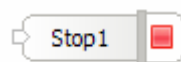
DatabaseLookup – dodajanje vsebine iz DB



CustomMediation – izvajanje dodatne logike (Java)



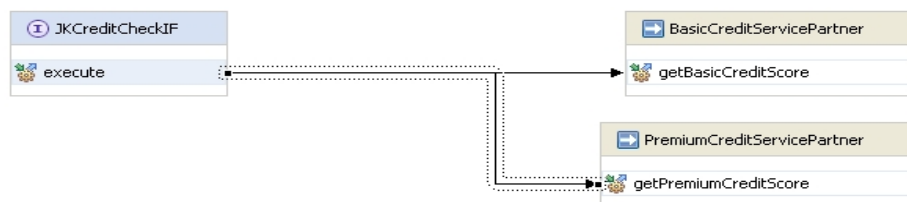
Fail – zaključek toka z izjemo



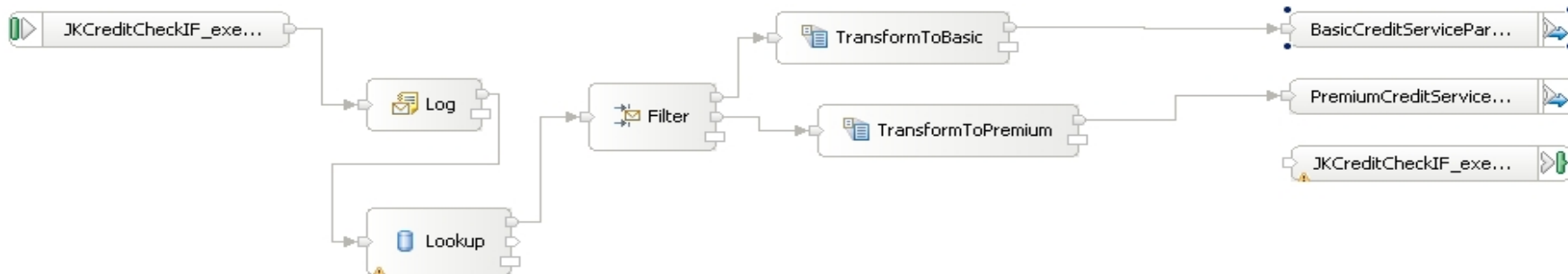
Stop – normalen zaključek toka

Posredovalni tokovi (*mediation flows*)

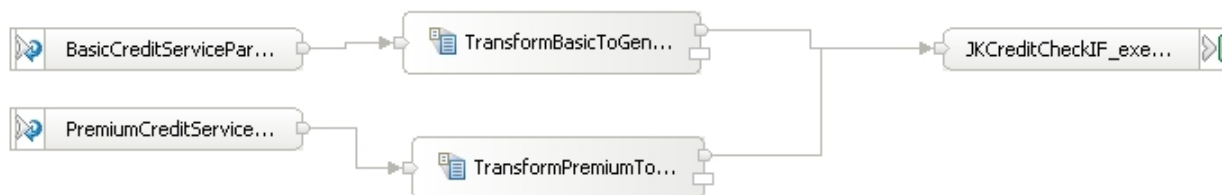
Operation Connections



Request : getQuote



Response : getQuote





WebSphere ESB, WebSphere MB & DataPower

ESB:

WebSphere ESB

Advanced ESB:

WebSphere Message Broker

HTTP JMS
WebSphere MQ
Web Services XML
WebSphere Adapters

HTTP JMS WebSphere MQ
Web Services XML WebSphere
Plus the following: Adapters
Weblogic JMS® Biztalk® TIBCO Rendezvous®
MQe Multicast Tuxedo® FTP TIBCO EMS JMS®
COBOL HIPAA EDI-FACT HL7 SonicMQ JMS®
Copybook ACORD Real-time IP AL3 Word/Excel/PDF
SWIFT FIX ebXML EDI-X.12 MQTT Custom Formats

Web Services connectivity
and data transformation

Universal connectivity and
data transformation

High Throughput Connectivity, data transformation & security

SOA Appliance:

DataPower XS40, XI50

HTTP WebSphere MQ
Web Services WS-* SLM
Security Crypto DataGlue
FTP ODBC XML XSLT

Zaključna misel

Živali pritečejo, če jih pokličemo po imenu. Prav kakor ljudje.

Ludwig Wittgenstein, Kultura in vrednota



edo.pavlic@snt.si