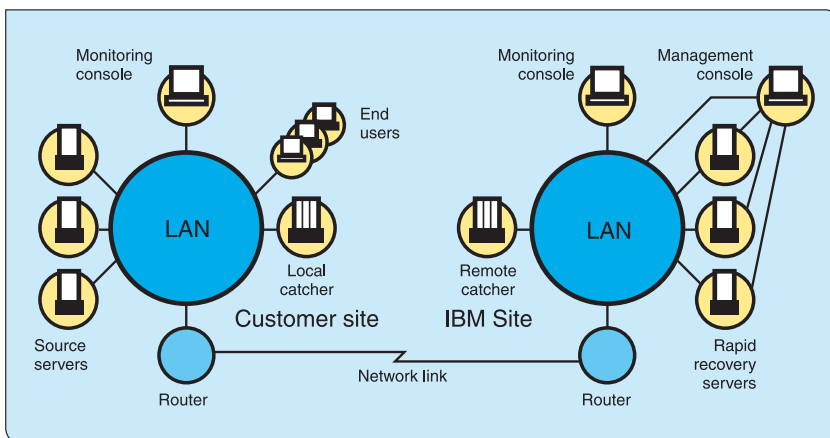


# Rapid Recovery for PC Server

Business Continuity and Recovery Services



## Benefits

A Business Continuity solution for:

*Unplanned outages*

Machine room local hardware failure, site loss; users are not interrupted.

*Fast*

The Rapid Recovery Servers can be built and ready to load your data within 15 minutes of a production server being impacted.

## Highlights

- **A high availability service enabling mirroring of production applications and data to catcher systems, providing a Rapid Recovery following an outage**
- **Only the changes are sent across the network, reducing the amount of bandwidth required and making the protection available at a fraction of the cost of disk-level mirroring**
- **Real time data replication vs. point in time data transfers minimises lost data**
- **The solution is scalable, allowing customers to mirror an entire system or only critical files**

## Summary

Rapid Recovery for PC Server (RR/PC) is a Business Continuity and Recovery Services (BC&RS) High Availability service that allows customers to mirror their production Windows NT<sup>®</sup> v4 applications and data to a local catcher system and/or remote catcher system.

If the production system should not be available for any reason, the customers' users can still access and process the data with minimum interruption.

This solution enables a customer to reduce recovery time and maintain a high level of availability for their critical NT v4 applications and data.

The level of recovery is measured in time, currency of data and minimal data loss from the time of the disruption to the time the critical environment is restored.

*Automatic*

The processes can be automated so when there is a server failure there is minimal loss of data or downtime for the business.

*Total solution*

You decide on critical applications, we provide the total solution for these critical servers.

*Near zero recovery time*

depending on solution, whilst reducing data loss to a minimum.

*Cost effective*

The economies of scale ensure the solution is kept at a competitive price.

*Unlimited Invocations*

24x7 days a week operation, 365 days a year.

## How it works

Installation of a Local Catcher and Mirroring software on the critical production servers.

Should a production server fail (hardware or application) the local catcher assumes the identity of the failed server whilst continuing to replicate the data from those servers which have not failed.

A Solution Design Workshop is conducted which recommends an end to end Rapid Recovery Solution.

The provision of a Remote Catcher at an IBM location/secondary site, enables you to have a copy of your mirrored data off-site, providing resilience in the event of your site being lost.

The provision of Rapid Recovery Servers which are created from the Remote Catcher when required e.g. for annual testing, or invocation. This enables automatic configuration of replacement hardware and data load to point of failure from the Remote Catcher. These servers are then shipped to you fully loaded with data at point of failure.<sup>1</sup>

## Requirements

Contact your IBM representative to understand the product roadmap of Windows NT/2000\*\* solutions.

The RR/PC solution is suitable for common hardware platforms: IBM, Compaq, Dell.

Customer requirements are determined by the Solution Design Workshop that is part of the offering.

## For more information

To learn more about IBM Business Continuity and Recovery Services or other IBM Global Services contact your IBM sales representative (or Business Partner if applicable) or visit:

[ibm.com/services/continuity/recover1.nsf](http://ibm.com/services/continuity/recover1.nsf)

[ibm.com/services](http://ibm.com/services)



### IBM United Kingdom Limited

PO Box 41  
North Harbour  
Portsmouth  
Hampshire  
PO6 3AU  
Tel: 0870 010 2503

[ibm.com/services/uk](http://ibm.com/services/uk)

### IBM Ireland Limited

Oldbrook House  
24-32 Pembroke Road  
Dublin 4  
Tel: 1890 200 392

[ibm.com/services/ie](http://ibm.com/services/ie)

### IBM Nederland N.V.

Postbus 9999  
1006 CE Amsterdam  
Tel: 020 513 5151

[ibm.com/services/nl](http://ibm.com/services/nl)

### IBM South Africa Limited

Private Bag X9907  
Sandhurst  
2196  
South Africa  
Tel: 0800 130 130

[ibm.com/services/za](http://ibm.com/services/za)

UK company-wide registration to ISO9001.  
Certificate number FM 92089.

The IBM home page can be found at [ibm.com](http://ibm.com)

IBM, the IBM logo and the e logo are registered trademarks of International Business Machines Corporation in the United States, other countries, or both.

\*\* Microsoft, Windows, Windows NT, and the Windows logo are trademarks of Microsoft Corporation in the United States, other countries, or both.

Other company, product and service names may be trademarks, or service marks of others.

<sup>1</sup> For protection against virus attack you may wish to instigate a time delay in the replication from local to remote.

References in this publication to IBM products, programs or services do not imply that IBM intends to make these available in all countries in which IBM operates. Any reference to an IBM product, program or service is not intended to imply that only IBM's product, program or service may be used. Any functionally equivalent product, program or service may be used instead.

This publication is for general guidance only.

© Copyright IBM Corporation 2001