

IBM

Lotus samhandlingsturné

What's New in IBM Lotus[®] Notes[®] 8.5.1

Lotus software





Financial Disclaimer

The information on the new product is intended to outline our general product direction and it should not be relied on in making a purchasing decision. The information on the new product is for informational purposes only and may not be incorporated into any contract. The information on the new product is not a commitment, promise, or legal obligation to deliver any material, code or functionality. The development, release, and timing of any features or functionality described for our products remains at our sole discretion



Agenda

- What's Notes 8.5.1 all about?
- New capabilities
- TCO/ROI advances
- Futures
-



Agenda

- What's Notes 8.5.1 all about?
- New capabilities
- TCO/ROI advances
- Futures
-



Notes/Domino facts and statements

- Uptake of 8.5.x has exceeded previous release adoption
- 50% of the Global 100 use
- Lotus Notes/Domino

- Matt Cain from Gartner position Lotus
- Notes as “the future of e-Mail”

- Lotus has gained over 18,378 new customer organizations since Lotus Notes and Domino 8 shipped

- “IBM has actually leapt to the head of the e-mail client pack by merging the traditional Notes client with Lotus Expeditor.” --- Gartner

- Domino are supported by over 10,000 IBM Business Partners

- “Lotus Notes 8.5 defeated Microsoft Exchange 2010 in a competitive product review.” --- CRN



We made some changes to packaging...

- - **Why?**

- You asked for it!
-
- Respond to new buying patterns and customer desire for simplification

- - **What?**

- Flexibility - License based on usage, not based on access method/client
-
- Simplification - Reduce number of client SKUs from 11 down to 2
-
- Value oriented - Deliver additional value through entitlements
-
-



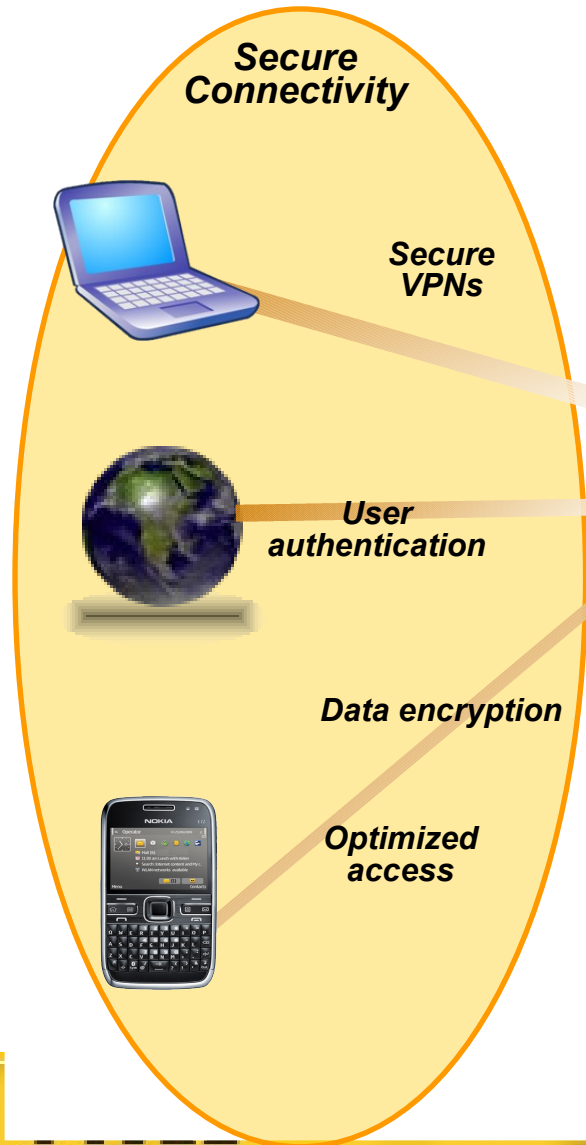
What does it all really mean? Free Designer! And VPN clients!

	Domino clients	Enterprise CAL (email/ PIM/ Domino applications)	Messaging CAL (email/ PIM only)
	Lotus Notes	X	X
	Lotus iNotes	X	X
	Lotus Notes Traveler	X	X
	Lotus Domino Designer	X	
	Lotus Symphony	X	X
	*Lotus Mobile Connect (clients)	X	
	Lotus Sametime entry	X	X
	Lotus Quickr entry	X	X



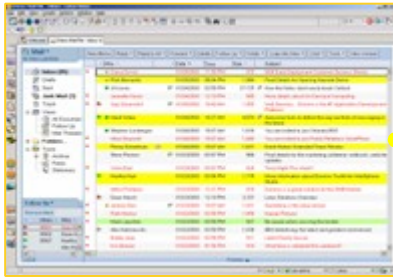
IBM Lotus Mobile Connect

Secure Access to Information over transient networks



- **VPN solution supports all access points**
 - Desktop (client)
 - Handheld Mobile device (client)
 - Browser (client – less)
 -
- **Proven ROI - least cost routing & data optimization**
 -
- **Secure end-to-end connect to corporate intranets**
 - Strong authentication and support for RSA Secure ID
 - End-to-end encryption- DES, Triple DES, RC5 and AES and FIPS 140-2 cert.
 -
- ▶ **Linked value (integrated support)**
 - IBM® Lotus® Notes® Traveler, Lotus Sametime mobile
 -
 -
- **Scalable and Reliable**
 - Supports gateway clustering, and can distribute across multiple sites
 -





Planner Component (Notes)

People Planner

Employee	Position	Band	Band Mos	Pos Code	Job Family	Work Location	PBC History
Caitin Garfield	Media Specialist	07	70	499A	24A	Chicago	-2-2
Herb Medway	Copy Writer	08	40	499A	24A	New York	-2-2
Lan Trung	Media Specialist	08	58	499A	24A	Paris	-3-2
Paul Clemmons	System Admin	09	26	499A	24A	Chicago	-2-2
Sabra Mazar	Media Specialist	08	70	499A	24A	New York	-1-1

Management Solution

Clemmons, Paul
 Company: Renovations EmplID: 1234567 Hire Date: 03/02/2001
 Business Unit: Corporate Job Code: SysAdmin Department: Market Support
 Department: Marketing Location: Chi Country: USA

Personal Business Commitment

Employee information and assessment dates

Employee information
 Employee name: Clemmons, Paul
 Position title: System Administrator

Assessment dates
 Assessment period*: 2007/01/01 to 2007/12/31

My PBC goals
 Business goals:

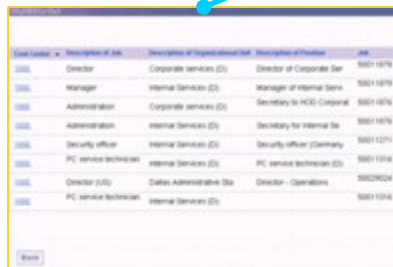
Contact Record

Paul Clemmons
 Renovations - System Admin

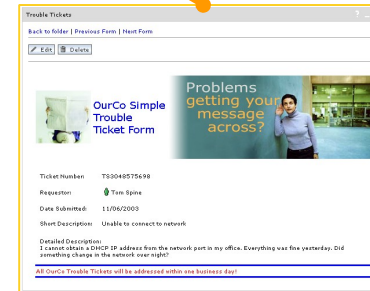
Phone: 301-555-8878
 E-mail: pclemmons@renovation.com
 Address: Building 3, Room 102, 10352 Renovations Way...
 City: Chicago
 Division: Corporate



Management Component (3rd Party)



Assessment Component (Web)



Contact component (Eclipse)



Lotus Notes partnerships

Delivered in 2009



Now in beta



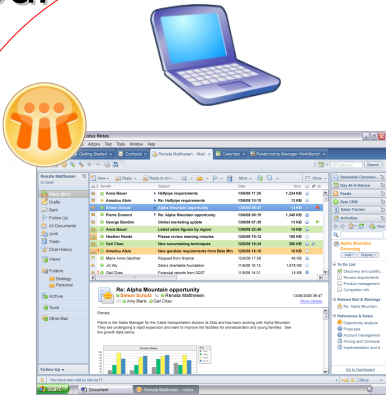
New partnerships





Roadmap ahead is full of great options with out of the box capabilities

Choose your client....



IBM Lotus Notes



IBM Lotus iNotes



IBM Lotus Notes Traveler



Works with your choice of platform....



IBM Lotus® Domino®



LotusLive



IBM Lotus Foundations





Agenda

- What's Notes 8.5.1 all about?
- New capabilities
- TCO/ROI advances
- Futures
-



Why Notes 8.5.1? - Quality, Quality, Quality

1. 1. Unified Business Card
- 2. 2. Lotus Protector Spam support**
- 3. 3. Lotus Traveler for iPhone**
4. 4. Upgradeable ST, Symphony, Connections
5. 5. XPages in the client
6. 6. Accept/Decline from Preview Pane
7. 7. Auto-correct text
8. 8. Drag/Drop table manipulation, e.g. resizing
9. 9. Drag e-mail onto side calendar
- 10.10. Extensible search center – add your own
8. 11. Empty trash with right-hand mouse click
- 9. 12. Viewers support Lotus Symphony (ODF) docs**
- 10.13. Import Office 2007 docs in Lotus Symphony**
- 11.14. Sametime parity (e.g. Add emoticon)
- 12.15. Roaming workspace**
- 13.16. Append vCard to mail signature
- 14.17. Unread counts and type-ahead in iNotes**
- 15.18. More colors available for color coding
- 16.19. APIs for accessing Notes data from Eclipse**
- 17.20. iNotes ID Vault Integration



Demo of 8.5.1

Day in the life of Jim's alter ego



Agenda

- What's Notes 8.5.1 all about?
- New capabilities
- TCO/ROI advances
- Futures
-



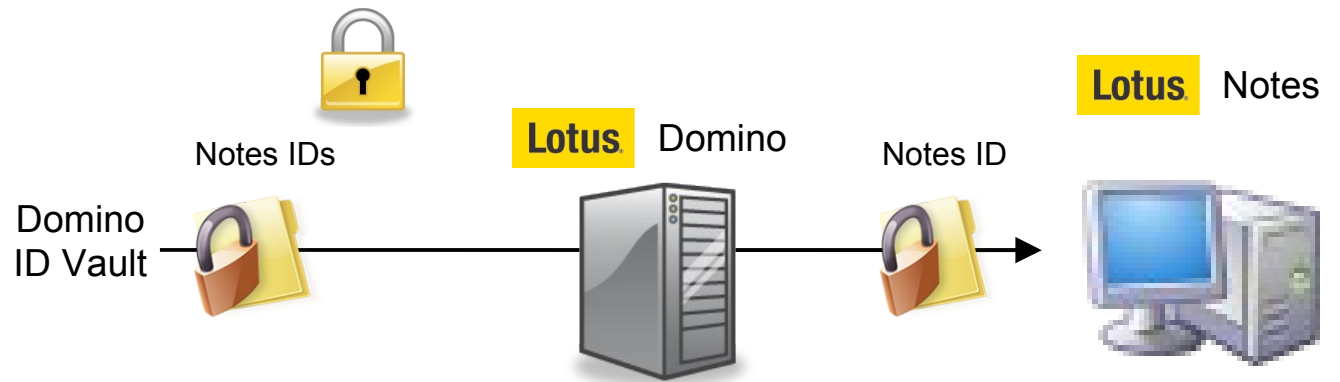
Central Notes ID Vault

- Eliminates expensive error-prone manual operations
- Automates Lotus Notes ID file provisioning to Notes desktops



Helpdesk

Self service

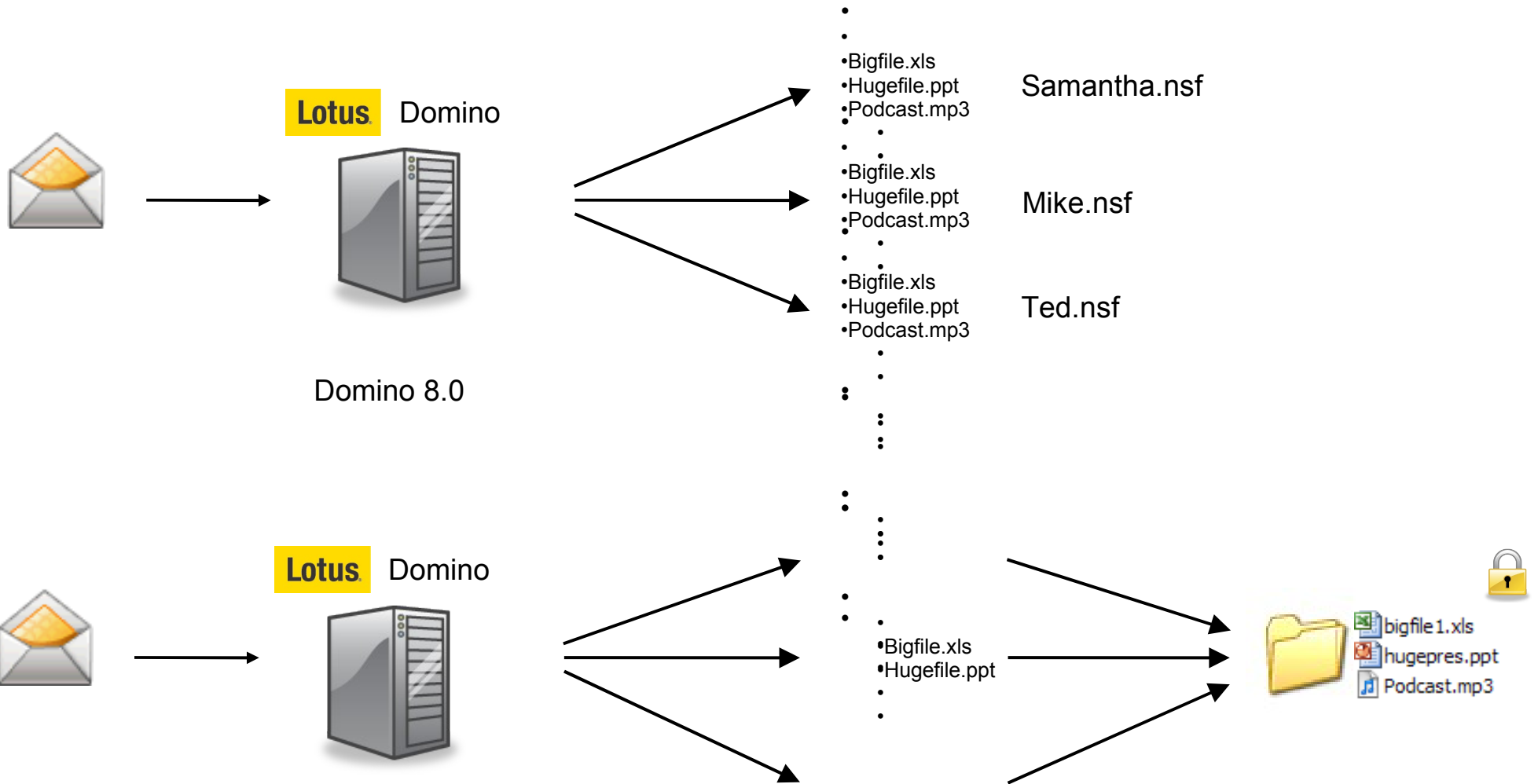


password change application





Domino Attachment and Object Storage (DAOS)





Compatibility and Open Standards

- Maintaining compatibility with applications and infrastructure protects customer investments, and avoids additional cost
-
- Lotus Notes & Domino leverages existing hardware in many cases
 - Avoids 'rip & replace' unlike Microsoft Exchange 2007
 -
- Lotus Notes & Domino applications built years ago continue to run
 - Build once, significant ROI!
-
- *“...the commitment Lotus puts into backwards compatibility is a huge cost savings—we haven’t had to rewrite anything. We have applications I wrote ten years ago that we still use today.”*
 - Troy Fulkerson, Director of Information Technology, Kentucky Baptist Convention
-



Investment protection

- Platform currency
- - Microsoft® Windows® 7 support (32/64 bit)
 - (with Lotus Notes 8.5.1 FP1)
 -
 - Apple® OS X Snow Leopard® support
 - (with Lotus Notes 8.5.1 FP1)
 -
 - Red Hat 5.4 support (with Notes 8.5.1)
-



Advancements in Serviceability

-
- ADC - Automatic Diagnostic Collection
-
- A chronology on first fault data collection
 - First available in Notes/Domino 6.x
 - Added matching/analysis in Domino 7
 - Added capability to collect data from Beta and Design Partners in Notes/Domino 8
 - Added capability to internally match collected problems against known problems/solutions (SPRs) in Domino 8
 - In Notes 8.5.1, client javacore files are collected if Notes2 process crashes
-



Advancements in Serviceability

- Why should you and IBM collect/review this data
 - Provide you an overview of crashes including
 - Number of Occurrences
 - Number of Users
 - First version crash was seen in (help determine origin of problems)
 - Last version crash was seen in (help determine effectiveness of a given fix)
- With the crashes that IBM receives during the beta period and through other mechanisms
 - We will raise defect reports on issues that we are unaware of
 - We will weight issues based on the frequency seen in the collected data
- Support will be able to perform a bulk analysis against customer collected data under a single problem report (PMR)
 - After the analysis, additional PMRs would be raised as necessary
- Going forward, we will expanding collection beyond crashes
 - Hangs
 - Delays
 - Non-crash disgnostics (Severe client is ...)



Agenda

- What's Notes 8.5.1 all about?
- New capabilities
- TCO/ROI advances
- Futures
-



***Demo of
Day in the Life of Jim's alter-ego
"tomorrow"***



Future enhancements for Lotus Live Notes

- Evolution of the local replica into a local cache
 - Triggered by policy
 - Building is invisible to the end user and throttled by server capacity
 - Seamless shift of mail access from local cache to server and back if cache maintenance is required
 - Progress toward autonomic local cache maintenance
- More seamless mail failover/failback
 - Significantly reduced notifications to end user when failover occurs
 - Seamless failover during transactions (delete, send, etc)
 - Predictable and configurable failback
- SAML token based SSO across mail and LotusLive services
- All of these are being considered for future on-premise Notes/Domino versions



Universal access for the Notes user





Thank you!!



Legal Disclaimer

•© IBM Corporation 2009. All Rights Reserved.

•The information contained in this publication is provided for informational purposes only. While efforts were made to verify the completeness and accuracy of the information contained in this publication, it is provided AS IS without warranty of any kind, express or implied. In addition, this information is based on IBM's current product plans and strategy, which are subject to change by IBM without notice. IBM shall not be responsible for any damages arising out of the use of, or otherwise related to, this publication or any other materials. Nothing contained in this publication is intended to, nor shall have the effect of, creating any warranties or representations from IBM or its suppliers or licensors, or altering the terms and conditions of the applicable license agreement governing the use of IBM software.

•References in this presentation to IBM products, programs, or services do not imply that they will be available in all countries in which IBM operates. Product release dates and/or capabilities referenced in this presentation may change at any time at IBM's sole discretion based on market opportunities or other factors, and are not intended to be a commitment to future product or feature availability in any way. Nothing contained in these materials is intended to, nor shall have the effect of, stating or implying that any activities undertaken by you will result in any specific sales, revenue growth or other results.

•All customer examples described are presented as illustrations of how those customers have used IBM products and the results they may have achieved. Actual environmental costs and performance characteristics may vary by customer.

•IBM, the IBM logo, Lotus, Lotus Notes, Notes, Domino, Quickr, Sametime, WebSphere, UC2, PartnerWorld and Lotusphere are trademarks of International Business Machines Corporation in the United States, other countries, or both. Unyte is a trademark of WebDialogs, Inc., in the United States, other countries, or both.

•Microsoft and Windows are trademarks of Microsoft Corporation in the United States, other countries, or both.

•Apple and Snow Leopard are trademarks of Apple Corporation in the United States, other countries, or both.

•Other company, product, or service names may be trademarks or service marks of others.