

DIGITAL SIPARIO - THE IBM SOLUTION

The IBM solution designed for the Teatro La Fenice allows the digitalization, the storing and the editing of the multimedia contents in standard digital formats and includes a sophisticated media asset management solution to allow the browsing and the further utilization of the assets.

The solution outlined in the picture has been designed by the IBM Portal Technology Centre in Naples and is based on the following components:

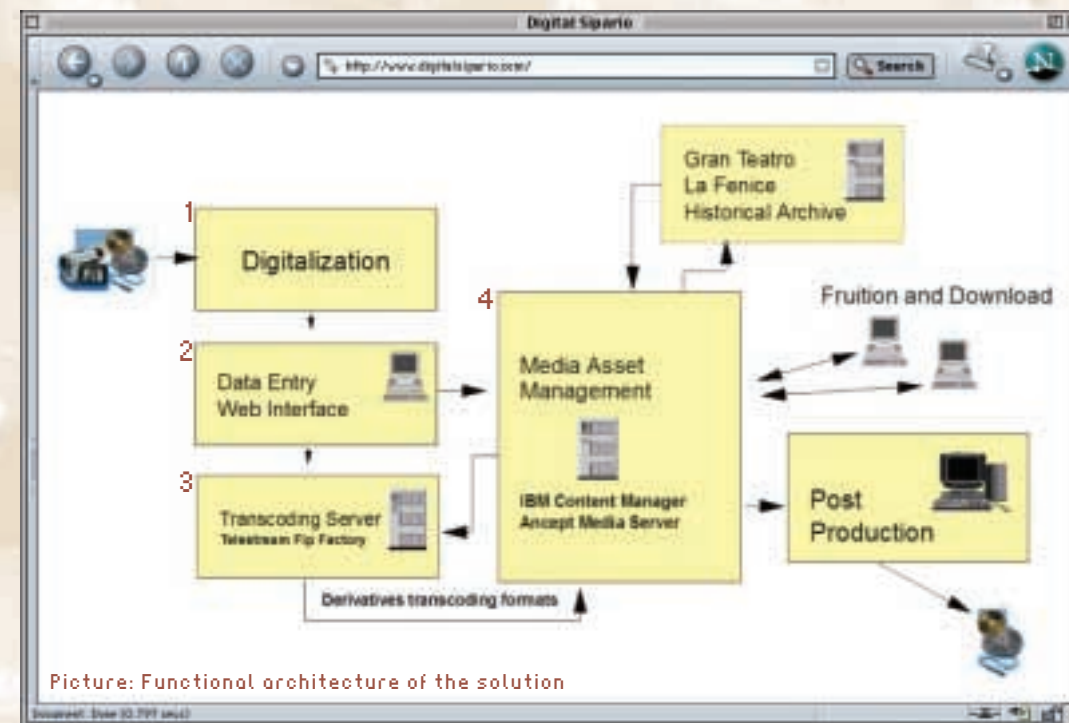
1. Digitalization: registration and digitalization of the videos of the theatrical performances in highest resolution and transfer to a library of digital tapes of using IBM's latest technology.

2. Data Entry: Internet-based interface designed specifically for the offline creation of complex metadata (such as parameters, free text descriptions, images, documents), which represent the complementary information to the video.

designed with IBM DB2 Content Manager and the software of the Business Partner Ancept Media Server, all of which ensures the functionality of:

- Relational Database Management RDBMS
- Workflow engine
- Low and medium resolution video archive
- Search engine
- Application Server
- Web Connector

All the workstations are connected in LAN to the Media Asset Management system via an Internet based interface.



3. Transcoding: the transcoding system based on the IBM xSeries platform and ad hoc software automatically generates all the video formats which will be used in the Media Asset Management solution. The transcoding server is able to run an automatic analysis of the video content and to store each frame corresponding to a scene transition as an image (a key frame thumbnail).

This allows a sequence of such thumbnails to build up a kind of visual storyboard: clicking on one specific key frame thumbnail, will start the video streaming at the corresponding time code.

4. Media Asset Management (MAM): the system allows the user to analyse, index, archive, retrieve and distribute the multimedia content. The solution is based on an IBM xSeries Server, an application component

It is possible to create several user profiles to customize the access of the information stored in the data base.

Key benefits of the solution:

- **Scalability:** the solution can grow over time according to needs, as well as manage new types of information, not originally defined.

- **Flexibility:** possibility to define and change number of users, level and complexity of the multimedia content.

MAIN OPERAS IN DIGITAL SIPARIO

TITOLO	COMPOSITORE	ANNO	DIRETTORE E MAESTRO CONCERTATORE	REGIA	LUOGO RAPPRESENTAZIONE
ANACRÉON	L. CHERUBINI	2000	GABRIELE FERRO	CHRISTIAN GANGNERON	PALAFENICE
ARIADNE AUF NAXOS	R. STRAUSS	2003	MARCELLO VIOTTI	PAUL CURRAN	TEATRO MALIBRAN
ATTILA	G. VERDI	2004	MARCELLO VIOTTI	Laboratorio integrato di regia, scenografia e costume dello IUAV di Venezia	PALAFENICE
IL BARBIERE DI SIVIGLIA	G. ROSSINI	2003	MARCELLO VIOTTI	BEPI MORASSI	TEATRO MALIBRAN
IL FLAUTO MAGICO	W.A. MOZART	1999	ISAAC KARABTCHEVSKY	STÉPHANE BRAUNSCHEWIG	PALAFENICE
KÁT'A KABANOVÁ	L. JANÁ EK	2003	LOTHAR KOENIGS	DAVID POUNTNEY	PALAFENICE
L'ELISIR D'AMORE	G. DONIZETTI	2003	ROBERO RIZZI BRIGNOLI	BEPI MORASSI	TEATRO MALIBRAN
LA BOHÈME	G. PUCCINI	1994	MARCELLO VIOTTI	GIORGIO MARINI	TEATRO LA FENICE
LA CENERENTOLA	G. ROSSINI (Rid. musicale di G. Parmigiani)	2005	MAURIZIO DINI CIACCI	F. BELLOTTO	TEATRO MALIBRAN
LA GRANDE DUCHESSE DE GÉROLSTEIN	J. OFFENBACH	2005	CYRIL DIEDERICH	PIER LUIGI PIZZI	TEATRO MALIBRAN
LA SCALA DI SETA	G. ROSSINI	2002	ROBERTO RIZZI BRIGNOLI	LUCA DE FUSCO	TEATRO MALIBRAN
LA TRAVIATA	G. VERDI	2001	ISAAC KARABTCHEVSKY	ALBERTO FASSINI	BUNKAMURA ORCHARD HALL - TOKYO
LA TRAVIATA	G. VERDI	1992	CARLO RIZZI	PIER LUIGI PIZZI	TEATRO LA FENICE
LA TRAVIATA	G. VERDI	2002	MARCELLO VIOTTI	GIANCARLO SEPE	TEATRO MALIBRAN
LE DOMINO NOIR	D. AUBER	2003	MARC MINKOVSKI	PIER LUIGI PIZZI	TEATRO MALIBRAN
LE MARTYRE DE SAINT-SEBASTIEN	C. DEBUSSY	1995	MARC SOUSTROT	PIER LUIGI PIZZI	TEATRO LA FENICE
LES PÊCHEURS DE PERLES	G. BIZET	2004	MARCELLO VIOTTI	PIER LUIGI PIZZI	TEATRO MALIBRAN
MAOMETTO II	G. ROSSINI	2005	CLAUDIO SCIMONE	PIER LUIGI PIZZI	TEATRO LA FENICE
MITRIDATE	N. PORPORA	2005	MASSIMILIANO CARRARO	MASSIMO GASPARN	TEATRO MALIBRAN
MORTE DELL'ARIA e IL CORDOVANO	G. PETRASSI	2004	KARL MARTIN	GIORGIO MARINI	TEATRO MALIBRAN
MOSÈ	G. ROSSINI	1993	GARCIA NAVARRO	PIER LUIGI PIZZI	TEATRO LA FENICE
PERSÉPHONE	I. STRAVINSKIJ	1994	MICHAEL BODER	ACHIM FREYER	TEATRO LA FENICE
PIA DE' TOLOMEI	G. DONIZETTI	2005	PAOLO ARRIVABENI	CHRISTIAN GANGNERON	TEATRO LA FENICE
SIMON BOCCANEGRA	G. VERDI	2001	RENATO PALUMBO	ELIO DE CAPITANI	BUNKAMURA ORCHARD HALL - TOKYO
THAÏS	J. MASSENET	2002	MARCELLO VIOTTI	PIER LUIGI PIZZI	TEATRO MALIBRAN
TURANDOT	F. BUSONI	1994	MICHAEL BODER	ACHIM FREYER	TEATRO LA FENICE

IBM



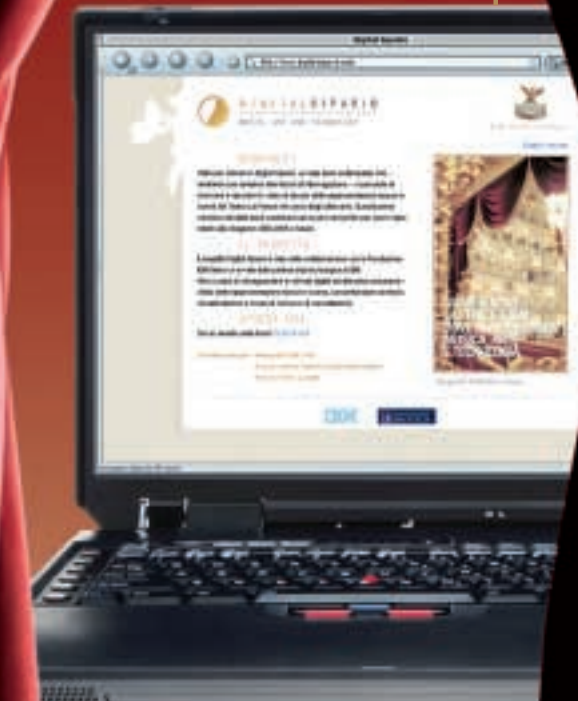
Official Information Technology Partner

The IBM homepage can be found at ibm.com

© IBM, the IBM logo and the business on demand logo lock-up are trademarks of International Business Machines in the United States, other countries or both.

References in this publication to IBM products, programs or services do not imply that IBM intends to make these available in all countries in which IBM operates. Any reference to an IBM product, program or service is not intended to imply that only IBM's product, program or service may be used. Any functionally equivalent product, program or service may be used instead.

Photo credit: Michele Crosera/Teatro La Fenice ©
© Copyright IBM Corporation 2006.
All rights reserved.



A new way to live La Fenice

**DIGITAL SIPARIO.
THE MUSICAL TRADITION
LIVES ON THE INTERNET**

IBM



Official Information Technology Partner



IBM AND LA FENICE: A TECHNOLOGY PARTNERSHIP

Digital Sipario (Digital Curtain) is the result of the collaboration between IBM, the IBM Italy Foundation and the La Fenice Foundation. The solution is designed to digitalise, preserve and share the video assets related to the artistic productions of past and future seasons.

Thanks to Digital Sipario, La Fenice can protect its artistic assets from deterioration and make them accessible to a wide audience through the Internet. This solution also enriches the content of the videos with a variety of collateral documents that relate to the historical background of this art genre, such as the librettos of the operas, posters, press articles, sketches of staging and so on.

By exploring the website everyone can experience and enjoy the most important operas staged by La Fenice in the last ten years, and obtain a deeper insight into the musical tradition of La Fenice.

This multimedia environment will become richer and richer over time, opening up new possibilities for students, schools and opera fans to approach the magical world of the opera, anywhere, anytime.



1st LAYER - TITLE

Via a simple menu using keywords or free search, it is possible to browse the desired title and access a short synopsis of the opera, which outlines the composer, the librettist, the main characters and a short summary of the story.

The title is linked with the shows that were staged both at La Fenice and at the Malibrán theatre, a prestigious Venetian theatre which belongs to the La Fenice network.

National and International Press Clippings



A GOLDMINE OF MUSICAL, ARTISTIC AND HISTORICAL INFORMATION.

Digital Sipario has a three-tiered structure: **TITLE** of the opera, which can contain one or more **SHOW**, with the related performance in video (**MEDIA**).

This three-tiered structure allows the user to link the same title (e.g. La Traviata) with one or more shows staged over different seasons (e.g. La Traviata: 1992, 2001, and 2003/4 Seasons) and to link each show with the video of one or more performances.



Opera Libretto

Show Titles



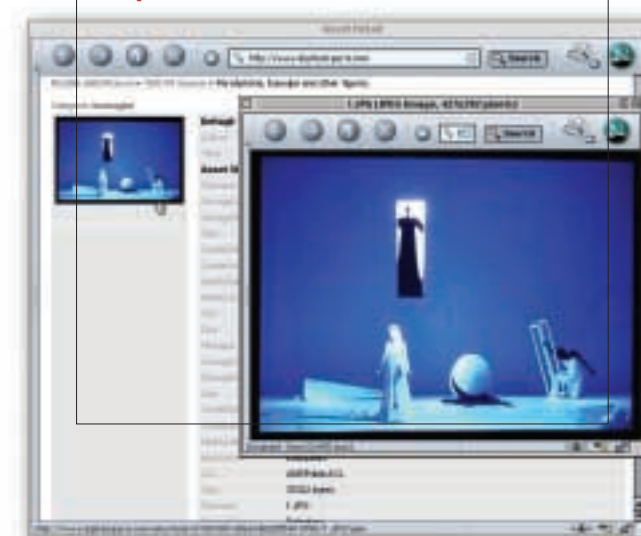
1st LAYER - SHOW

Once the desired **SHOW** is visualized, it is possible to browse all the related details, such as the location, orchestra director, artistic cast and date of performance.

It is possible to retrieve a rich documentation that provides insight into the historical and cultural background of opera, such as

- Stage sketches or photos
- Libretto of the opera in PDF format for download
- Press clippings from national and international newspapers, which can be displayed or printed.

Stage Photo



Opera Poster



1st LAYER - MEDIA

A simple link allows browsing the video of a specific performance, defined by the date of staging and the major interpreters.

The video can be played in three different compressions, according to the type of Internet connectivity available. It is also possible to view the video storyboard to quickly choose a specific part of the video. The storyboard is created automatically during the video transcoding.

Media - Video Streaming



Storyboard

