

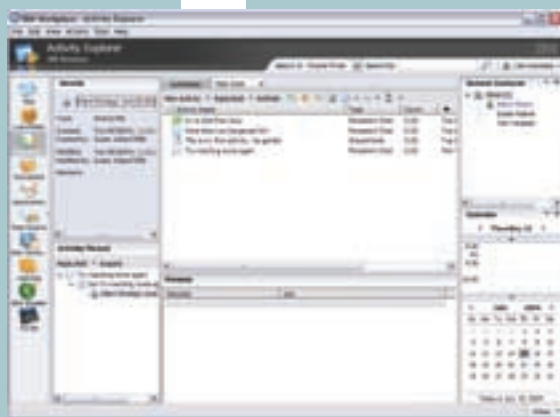


Why “i” for Workplace?

What is IBM Workplace?

IBM Workplace Collaboration Services is an integrated collaborative environment that includes a wide range of capabilities – e-mail, calendaring and scheduling, awareness, instant messaging, learning, team spaces, Web conferencing, document management, and Web content management.

“But I think I already have a lot of that capability?” Well, yes and no – there are some very good reasons why you might like to consider IBM Workplace.



A tailored user experience for your needs

Workplace contains a huge amount of functionality, but the great thing is that you can choose how much of it you let each user see. That means that you can totally tailor the user experience – keeping it simple and relevant for those who are using it.

Imagine being able to have a simple view for a customer service representative that includes e-mail, some sample forms, and access to the order status – but with very little work, have a different view for someone in finance. You could even have a very simple view for use in a kiosk that would allow factory workers to use intra-office e-mail, make improvement suggestions, and access their personnel details.

Integrated collaboration aids productivity

Instant messaging services – Provides seamlessly integrated presence awareness and instant messaging across all of the collaborative capabilities to help individuals, teams and entire organisations to be more productive. That means you can see if the person who sent you an e-mail, or who wrote a document is online at the moment to ask them a question via Instant Messaging.

Team space services – Helps organisations to bring together dispersed team members to collaborate more effectively by using shared team spaces based on either ready-to-use templates or customised templates that meet unique business needs.

Web conferencing services – Provides integrated Web conferencing across a Workplace environment to provide instant access to live meeting capabilities so that team members can share presentations and collaborate real-time.

Messaging services – Provides standards-based e-mail, calendaring and scheduling and a personal address book with a choice of rich client or basic browser experience so everyone in an organisation can stay connected and communicate more effectively.

Online learning saves money

Learning services – Provides full-featured, flexible and standards-based learning functionality that helps organisations manage their training programs more efficiently and integrate learning resources right on the desktop. Integration with other Workplace services delivers blended learning experiences and provides students with enhanced tools such as course discussion areas, document sharing, Web conferencing, and chat rooms.

A simplified office suite: simple and cost effective

Many find that today's office suite – word processor, spreadsheet, presentation tools, e-mail client are just too complex. Most people use a mere 20 percent of the functionality, but still pay for it all.

The Workplace Managed Client (a companion product to Workplace Collaboration Services) provides built-in productivity tools including a word processing editor, spreadsheet editor, presentation editor and a project planner tool that can interoperate with the main productivity applications in use today. These built in functions are easy to use, low cost and able to be integrated into processes – to fit with how people need to use them.

Document and content management

Document services – Provides a standards-based document management capability with a choice of rich client or basic browser experience to manage the complete life cycle of office documents, from inception to collaborative authoring to review, approval and archival.

Web content management services – Helps streamline the Web content management process by allowing content experts to author and publish Web content quickly and easily.

Activity Explorer – A new innovation that helps people to more effectively track and manage multiple points of interaction (activities) that relate to a project or process. Activity Explorer extends collaboration beyond instant messaging and e-mail by allowing teams to proactively record and organise their shared conversations and documents using an easy to navigate, structured approach.

Rapid application development

Templates and forms – Built-in application and form templates allow users with varying skills to build applications quickly and efficiently.

OK, so Workplace sounds like a good idea, but why deploy it on an IBM @server iSeries?

Use less servers

With iSeries and IBM @server i5/OS, you can implement Workplace Collaboration Services on a single physical server with a single operating system image. That's right – no need for multiple servers or even multiple partitions – a single server for development, test and production!

You can even run Lotus Domino, Sametime, and QuickPlace on the server at the same time – ideal if you have been using these in the past and want to continue using them in some areas of your business. Certainly most users of Lotus Notes will want to continue using this for mail and possibly applications

Optimise resource and improve performance

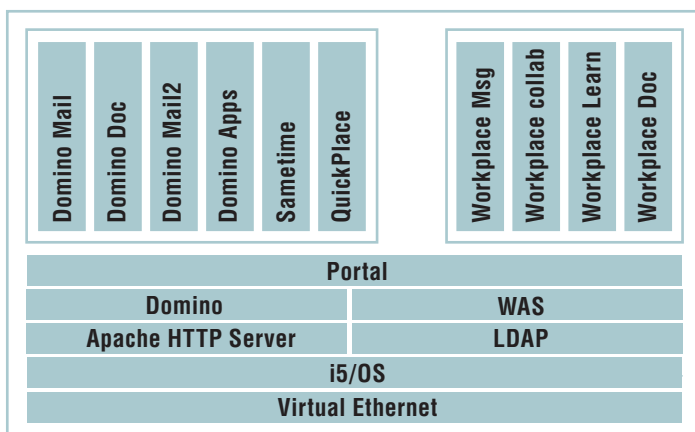
Talk about on demand... the iSeries will then dynamically reallocate resources within the system throughout the day depending on which applications are busiest. Try doing that on any other hardware platform!

Built-in virtualization capabilities mean the system dynamically and automatically reallocates resources to respond to fluctuations in your activity – hour-by-hour or minute-by-minute. Capacity on Demand means you can 'turn on' additional capacity when you need it, immediately. Growth without disruption.

Integration

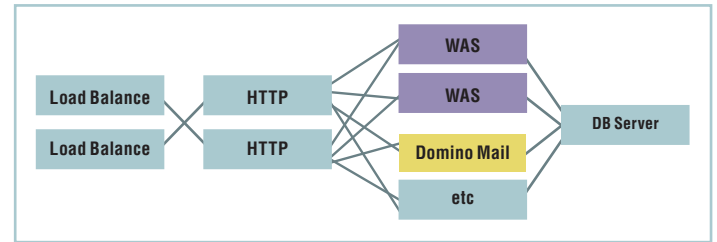
Workplace Collaboration Services provides a single, standards-based, completely integrated collaborative environment. iSeries and i5/OS include many of the underlying components that Workplace needs, already built-in and tested:

- Directory services (LDAP)
- Database (DB2)
- HTTP server (powered by Apache)
- WebSphere Application Server
- Systems Administration
- Backup and recovery
- Security.



Use less software

Because you are using less physical servers, you can use a lot less software licences as well – of both the operating system and the application software. The following diagram shows the number of servers you might use in your production environment were you deploying on an IBM @server xSeries architecture – but many users will have more Domino servers for a start.



On top of the operating system licences and application licences you will need for the production environment, you will also require licences for your development machine and your user acceptance testing server... but not with iSeries! Also, think about the differences in backing up and recovering these environments in the event of a disaster.

Develop and test on the same server

With iSeries for Workplace, development and test servers can reside on your production server – just in a different sub-system.

- *Develop and test without the need for additional software licences*
- *Test your new applications on the actual hardware that you will run it on in production.*

You can even run multiple releases of Domino or Workplace at the same time (from R6 onwards). This means that you can use the single server as a development server even when moving to the next release of the application. Compare that to an xSeries installation where you would probably buy entirely new hardware for the job.

Speedy installation

With the Workplace setup wizard for iSeries, you answer 15 questions and the system automatically creates a functional Workplace Collaboration Services instance with all the necessary parameters to integrate with these components:

- Directory services
- Relational database
- HTTP server
- WebSphere Application Server
- Portal Server.

This is very different to the installation process on other platforms!

20 Licences of WSE at no charge

Workplace Services Express (WSE) licenses bundled with selected iSeries Enterprise Editions.



Monthly iSeries 'in touch' Events

Also, why not register for one of our free monthly iSeries briefings where we provide a product update and demonstrate many of the latest iSeries capabilities including:

- *IBM Workplace on iSeries*
- *Domino 7 on iSeries*
- *Web enabling iSeries applications with WebSphere*
- *Running AIX and Linux® on iSeries*
- *Integrating Windows servers with iSeries.*

To see the agenda, forthcoming dates, and to register, please visit:
ibm.com/uk/news/events/intouch

Further information

To find out more details about Workplace please visit: **ibm.com/series/workplace**

For general information about iSeries please visit the following site which also contains information on how to contact an IBM representative: **ibm.com/servers/uk/eserver/series/**

IBM United Kingdom Limited

emea marketing and publishing services (emaps)
Normandy House
PO Box 32
Bunnian Place
Basingstoke
RG21 7EJ
United Kingdom

The IBM home page can be found at **ibm.com**

IBM, the IBM logo, ibm.com, AIX, DB2, Domino, @server, iSeries, i5/OS, Lotus, Lotus Notes, QuickPlace, Sametime, WebSphere, Workplace and xSeries are trademarks of International Business Machines Corporation in the United States, other countries, or both.

Linux is a trademark of Linus Torvalds in the United States, other countries, or both.

UNIX is a registered trademark of The Open Group in the United States and other countries. Other company, product and service names may be trademarks, or service marks of others.

References in this publication to IBM products, programs or services do not imply that IBM intends to make these available in all countries in which IBM operates. Any reference to an IBM product, program or service is not intended to imply that only IBM products, programs or services may be used. Any functionally equivalent product, program or service may be used instead.

IBM hardware products are manufactured from new parts, or new and used parts. In some cases, the hardware product may not be new and may have been previously installed. Regardless, IBM warranty terms apply.

This publication is for general guidance only. Information is subject to change without notice. Please contact your local IBM sales office or reseller for latest information on IBM products and services.

Photographs may show design models.

© Copyright IBM Corporation 2005
All Rights Reserved.

