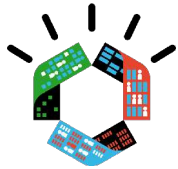


Herzlich Willkommen zum IBM Lotus Webcast!

Wir werden in Kürze beginnen, bitte haben Sie noch einen Moment Geduld.

Ihre Einwahldaten zur Telefonkonferenz:
Kostenfreie Einwahlnummer (D):
Konferenzpin:

0800 000 127 6
278471

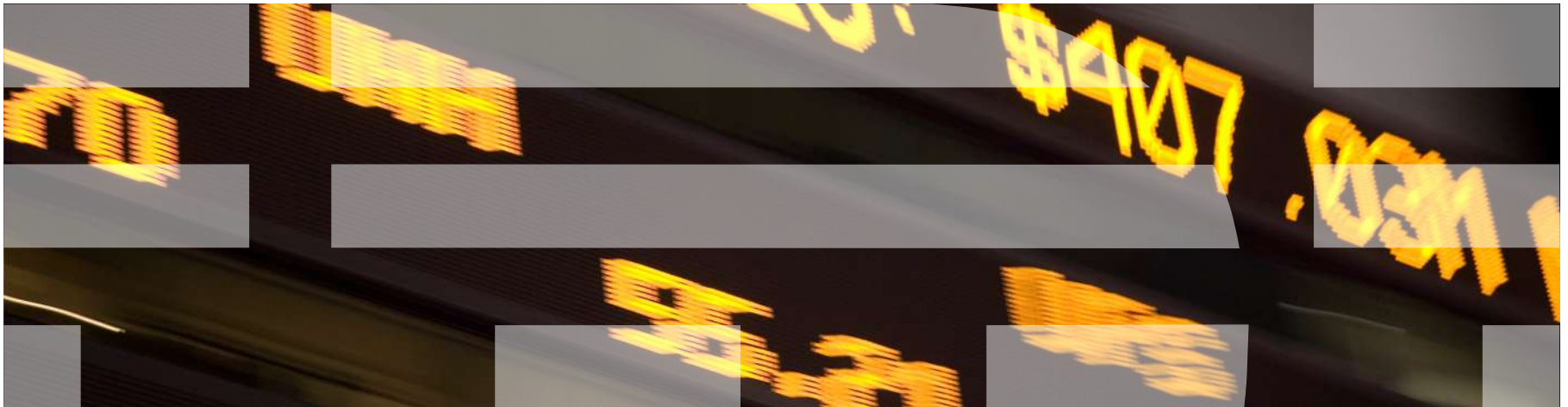


**Mittwoch
ist Lotus Tag!**

Mit der neuen IBM Lotus Webcast-Serie
„Smart people work smarter“.

Übrigens: Wenn Sie F11 in Ihrem Browser drücken können Sie den Webcast in Vollbild verfolgen.

Die nächste Generation des Office-Paketes: **Lotus Symphony 3.0** Vorschau



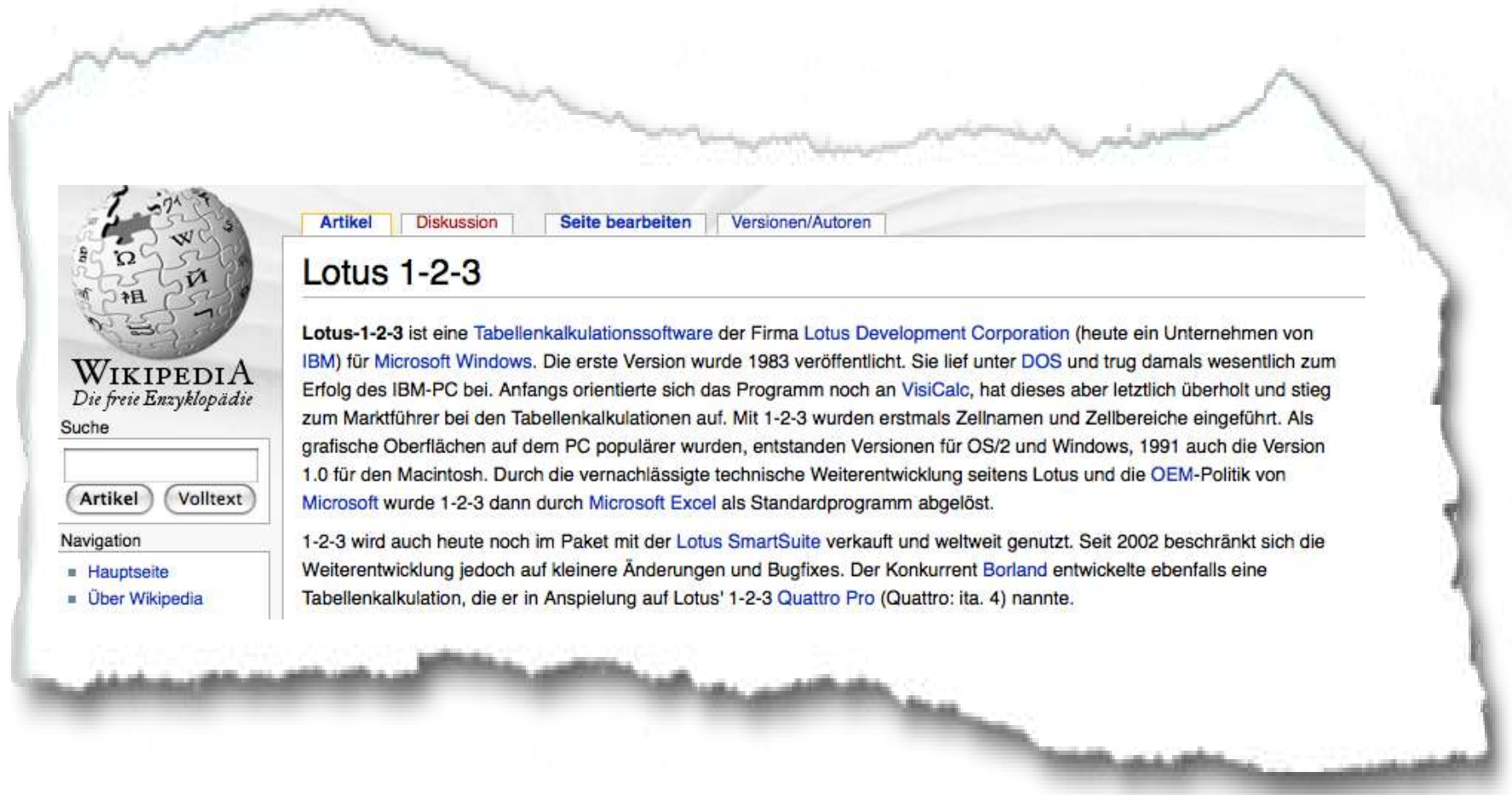
Agenda

- Was ist Lotus Symphony
- Aktueller Status zu Lotus Symphony
- Beyond Office – Die langfristige IBM Strategie
- Transition zu Lotus Symphony
- Q & A



Die lange Lotus Symphony Historie

Lotus 1-2-3 (in den 1980er Jahren)



Quelle: http://de.wikipedia.org/w/iki/Lotus_1-2-3

Lotus®

Die lange Lotus Symphony Historie

Lotus Symphony for DOS (in den 1980er Jahren)

Try Beta [Log in / create account](#)

[article](#) [discussion](#) [edit this page](#) [history](#)

Lotus Symphony for DOS

From Wikipedia, the free encyclopedia

This article refers to the 1980s DOS software. For the currently released multi-platform Office Suite, see [IBM Lotus Symphony](#).

This article does not cite any references or sources.
Please help [improve this article](#) by adding citations to [reliable sources](#). Unsourced material may be [challenged and removed](#). *(August 2009)*

Lotus Symphony was an [integrated software](#) package for creating and editing text, spreadsheets, charts and other documents on [DOS](#) operating systems. It was released by [Lotus Development](#) as a follow-on to its popular [spreadsheet](#) program, [Lotus 1-2-3](#) and was produced from 1984-1992. [Lotus Jazz](#) on the [Apple Macintosh](#) was a sibling product. [IBM](#) revived the name [Lotus Symphony](#) in 2007 for a new office suite based on [OpenOffice.org](#), but the two programs are otherwise unrelated.

History

[\[edit\]](#)

Lotus 1-2-3 had originally been billed as an integrated product with spreadsheet, database and graphing functions (hence the name "1-2-3"). Other products described as "integrated" such as [AppleWorks](#) normally included [word processor](#) functionality. Symphony was Lotus' response.

Overview

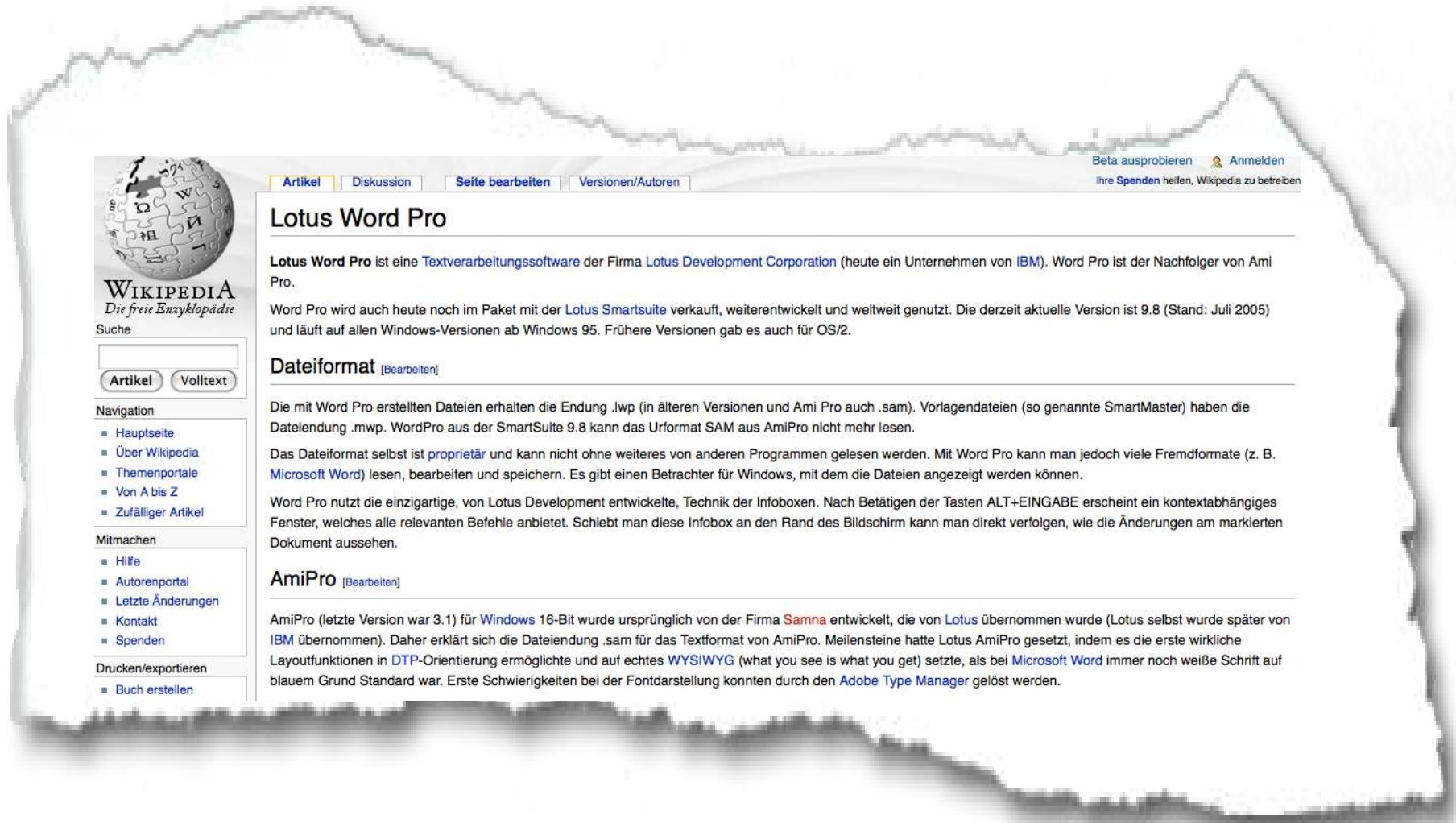
[\[edit\]](#)

Symphony for [DOS](#) is a program that loads entirely into memory on startup, and can run as a DOS task on versions of [Microsoft Windows](#) (3.x/95/98/ME). Using ALT-F10 the user can alternate among the five "environments" of the program, each a rendering of the same underlying data. The environments are:

- SHEET, a spreadsheet program very similar to 1-2-3
- DOC, a word processor
- GRAPH, a graphical charting program
- FORM, a table-based [database management system](#)
- COMM, a [communications program](#)

Die lange Lotus Symphony Historie

Lotus Word Pro / AmiPro (in den 1990er Jahren)



Quelle: http://de.wikipedia.org/w/iki/Lotus_Word_Pro



Die lange Lotus Symphony Historie

Lotus SmartSuite (in den 1990er, 2000er Jahren)

[Artikel](#) | [Diskussion](#) | [Seite bearbeiten](#) | [Versionen/Autoren](#)

Lotus SmartSuite

Die **Lotus SmartSuite** ist ein Office-Paket des Herstellers IBM (ursprünglicher Hersteller Lotus) für die Betriebssysteme Windows und OS/2.

Inhaltsverzeichnis [\[Verbergen\]](#)

- Überblick
- Komponenten
- Versionen
 - Microsoft Windows
 - IBM OS/2
- Siehe auch
- Weblinks

Überblick [\[Bearbeiten\]](#)

Die Sammlung der Büroprogramme von Lotus Development ist besonders gut für die Teamarbeit geeignet und kann mit **Lotus Notes** eingesetzt werden. Die objektorientierte Programmiersprache **Lotusscript** steht in den meisten Anwendungen bereit.

Komponenten [\[Bearbeiten\]](#)

Diese Zusammenstellung enthält meist folgende Programme.

- Lotus Word Pro (*früher Ami Pro*) - Textverarbeitung
- Lotus 1-2-3 - Tabellenkalkulation
- Lotus Approach - Datenbank
- Lotus Freelance Graphics - Präsentationsprogramm
- Lotus Organizer - Personal Information Management
- Lotus FastSite** - Konvertierung der SmartSuite-Dateien zu Webseiten

Die aktuelle Version der SmartSuite ist die 'Millennium 9.8 Fixpack 3' vom Oktober 2005.

Der Nachfolger von SmartSuite dürfte **Lotus Symphony** sein, das seit Mai 2008 in einer stabilen Version vorliegt.

Die lange Lotus Symphony Historie

Lotus Symphony 1.0 (May 2008)

The screenshot shows the Wikipedia article for "IBM Lotus Symphony". At the top left is the Wikipedia logo and navigation links: "Main page", "Contents", "Featured content", "Current events", and "Random article". Below that is a search box with "Go" and "Search" buttons. Further down are "interaction" and "toolbox" sections with various links. The main article content includes a title "IBM Lotus Symphony", a sub-header "From Wikipedia, the free encyclopedia", and a note: "For the 1980s DOS software, see Lotus Symphony for DOS." The main text states: "IBM Lotus Symphony is a suite of applications for creating, editing, and sharing text, spreadsheet, presentations and other documents, and is currently distributed as freeware. First released in 2007, the suite has a name similar to the 1980s DOS suite Lotus Symphony, but the two programs are otherwise unrelated." A "Contents" table of contents lists: 1 Features, 2 History, 3 Version release dates, 4 See also, 5 References, and 6 External links. A "Features" section follows, stating "IBM Lotus Symphony consists of:" and listing: "IBM Lotus Symphony Documents, a word processor", "IBM Lotus Symphony Spreadsheets, a spreadsheet program", and "IBM Lotus Symphony Presentations, a presentation program". It then says "Each application is split into tabs." and "Symphony supports the OpenDocument formats, as well as the binary Microsoft Office and Lotus SmartSuite formats." It also mentions that it can export PDF files and import Office Open XML files. The final paragraph discusses its availability for Linux, Windows, and Mac OS X, its basis on Eclipse Rich Client Platform, and its dual-licensing under GNU Lesser General Public License and Sun's own SSISSL.

Was macht IBM in Lotus Symphony richtig?

- Word Pro / AmiPro / SmartSuite ... + Marktbegleiter

Das Dateiformat selbst ist **proprietär** und kann nicht ohne weiteres von anderen Programmen gelesen werden.

- IBM Lotus Symphony

Keine proprietäre Dateiformate mehr, sondern **Offene Standards**

Symphony supports the **OpenDocument** formats, as well as the binary **Microsoft Office** and **Lotus SmartSuite** formats.^[3] It can also export **Portable Document Format (PDF)** files and import **Office Open XML** files.

Frei verfügbar für **Mac, Linux & Windows**

IBM Lotus Symphony 3, Beta 2

The screenshot displays the IBM Lotus Symphony 3 Beta 2 interface. The main window shows a presentation slide titled "Beyond Office is a comprehensive vision" with the IBM logo. The slide content includes:

- Activity oriented
- Rich content
- Reputation/Ranking/Value
- Discovery
- Content layer: A mashup of rich media types
- Semantics layer: Big, authentic, open-ended
- Programmable

The slide also features a central text box: "What you you want to do? I want to create a...". The interface includes a "Slides" pane on the left, a "Properties" pane on the right, and a status bar at the bottom showing "Slide 5 / 9" and coordinates "X=33.04cm Y=11.76cm".

An "About IBM Lotus Symphony" dialog box is overlaid on the slide, containing the following text:

Lotus Symphony 3 Beta 2
Release 3.0.0
Revision 20100130.2016
Based on Open Office, and ODF compliant
Licensed Materials – Property of IBM. © Copyright IBM Corporation and its licensors 2003, 2010. All Rights Reserved. IBM, the IBM logo, Lotus and Symphony are trademarks of IBM Corporation in the United States, other countries, or both. Other company, product or service names may be trademarks or service marks of others.

The dialog box has four buttons at the bottom: "Feature Details", "Plug-in Details", "Configuration Details", and "OK".

Lotus Symphony “Vienna” new Features & Enhancements



Documents

- Nested table
- Multi-page display
- Master Document
- Enhanced PDF export
- Improved Document Notes
- Much more fields support



Spreadsheet

- Increased maximum columns to 1024
- Sheet specific zoom
- Text to column
- Right-to-Left layout
- Multi-select sheet
- Sort and Formula Performance
- Data Pilot enhancement



Presentation

- Multi-monitor support
- Audio/video support
- Slide show HW acceleration for graphics
- Presentation table style
- More animation effects
- Enhanced native table support

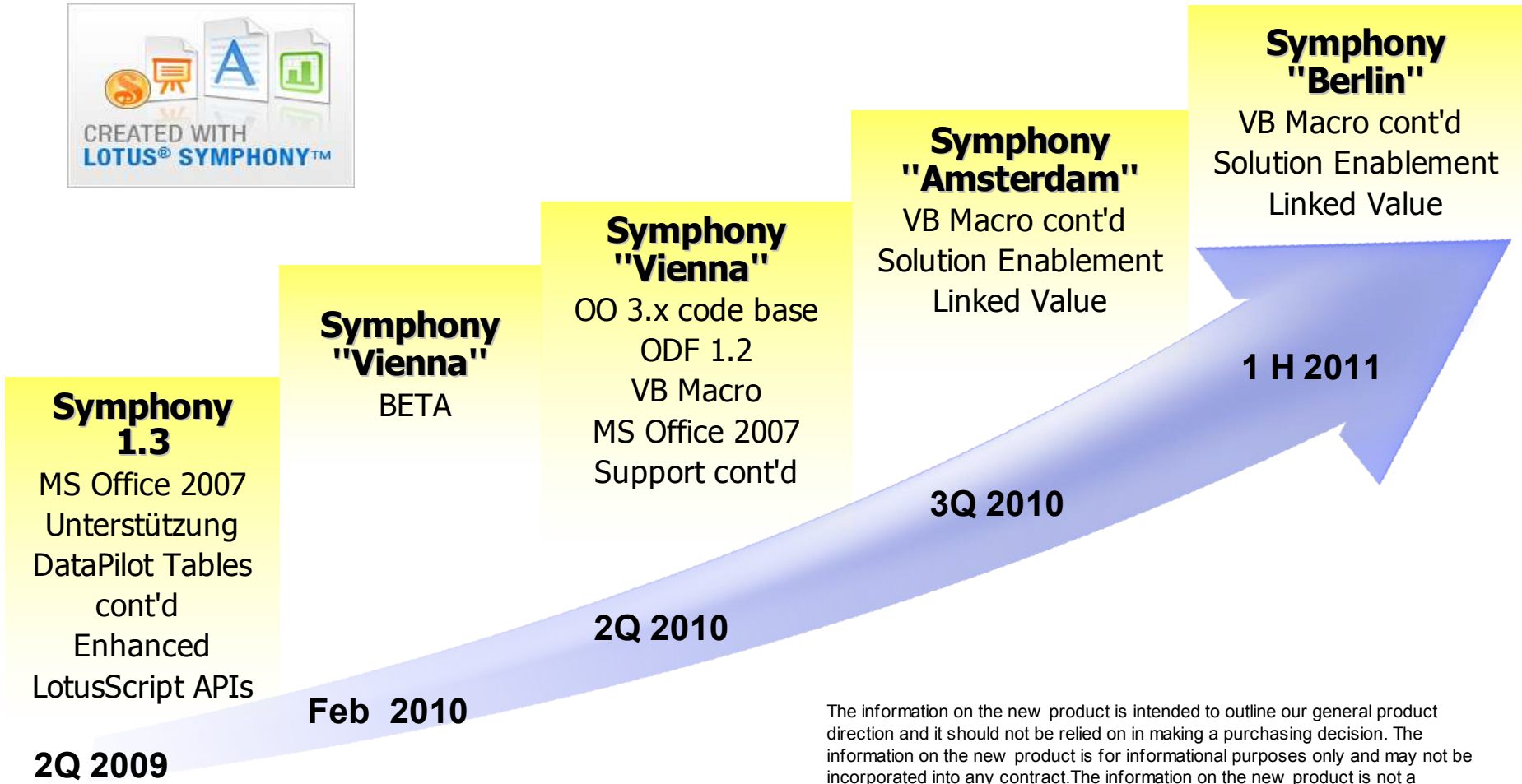
General

- VBA Support
- ODF 1.2 Support
- Support OLE objects
- File/New -> Biz Card, Label, ...
- Add-on installer for Notes
- Signed Plugins

Enhancements

- MS Office 2007 Import
- MS Office Fidelity
- New Chart Support
- Interoperability with Ooo
- Graphic objects rendering
- Performance
- Stability
- User experience
- Programmability—richer Java &LS APIs

IBM Lotus Symphony – Roadmap (2009-2011)



The information on the new product is intended to outline our general product direction and it should not be relied on in making a purchasing decision. The information on the new product is for informational purposes only and may not be incorporated into any contract. The information on the new product is not a commitment, promise, or legal obligation to deliver any material, code or functionality. The development, release, and timing of any features or functionality described for our products remains at our sole discretion



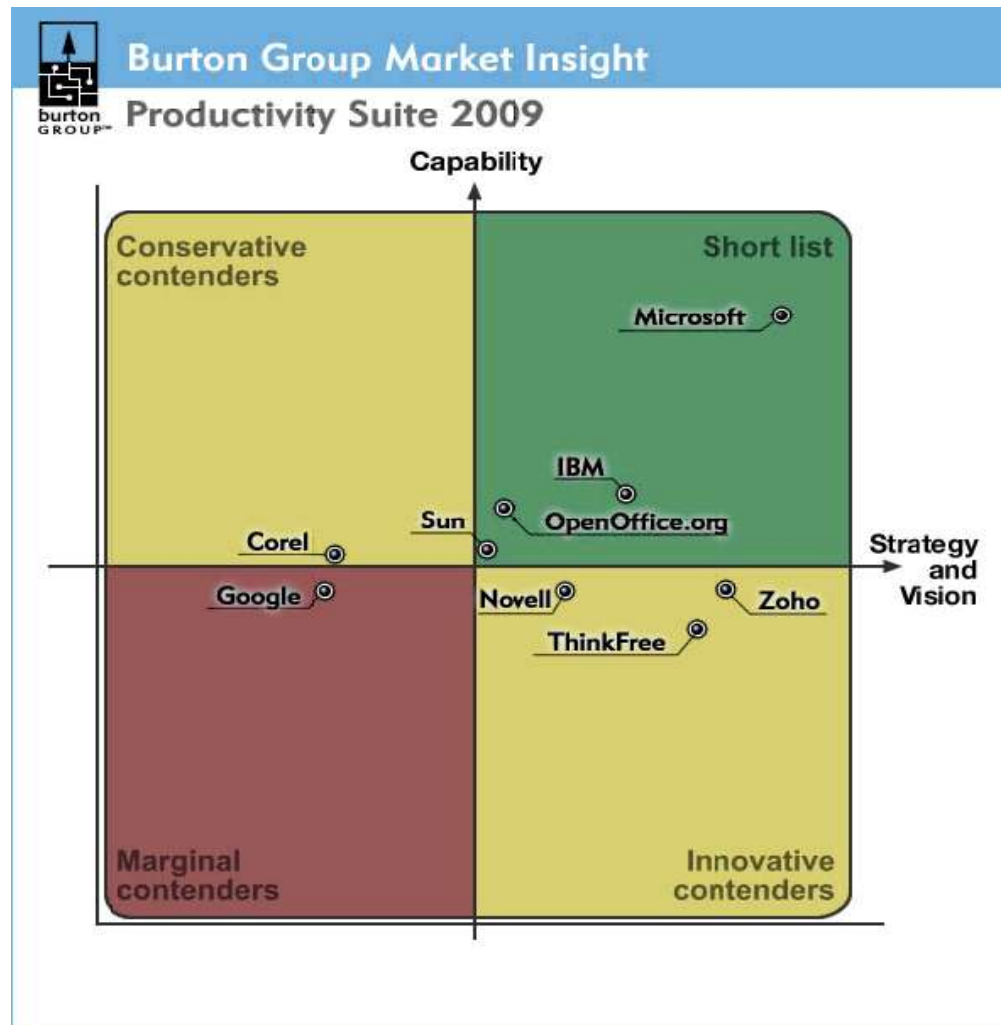
IBM Lotus Symphony 3, Beta 2

- Basierend auf OpenOffice.org 3.0 Code Stream
- Fokus auf höchste Kompatibilität zu den MS Datei Formaten

▪ **Kostenfrei**

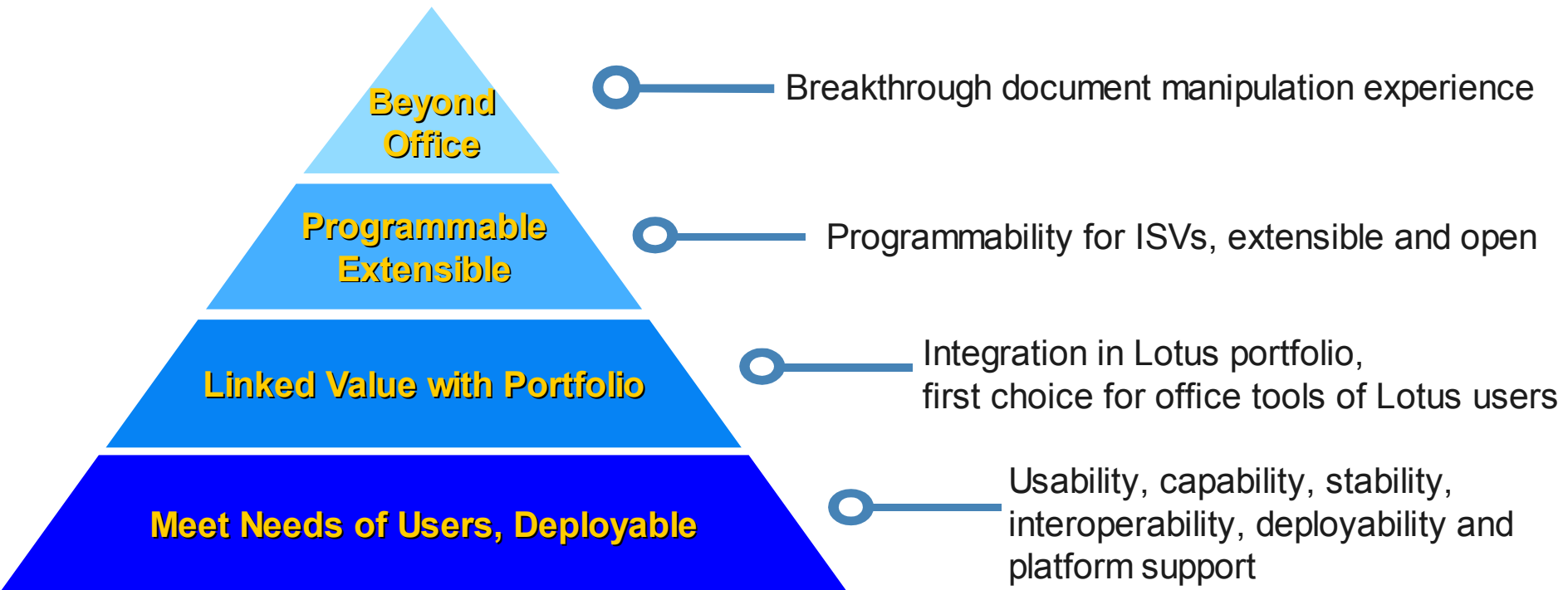


Alternative zu MS Office: Lotus Symphony - Auch in Leader für Office Productivity Tools!



Lotus Symphony: Mehr als nur kostenfrei

- Lotus Symphony stellt ein langfristiges Key Investment der IBM dar
 - Unterstützung und Verbreitung des ODF-Formats um Innovationen in diesem Markt zu ermöglichen
 - Langfristig: Basis für ein neues, dynamisches Arbeiten mit Dokumenten



Beyond Office

Discover

Create

Share

Assemble data

Insert...

- Image
- Wiki page
- Spreadsheet
- Data feed
- Video
- Voice-over

Find...

Slides

containing:

Orlando roadmap

ranked by:

Popularity

My Feeds

Alerts

Reuse!

Author collaboratively

Authoring activity

"Orlando" Project Proposal

[New version](#) | [Download](#) | [Publish output](#) | [Archive](#)

ELEMENT	VERSION	CHECKED OUT BY
Title	2	Samantha
Executive summary	4	Samantha
Lorem ipsum dolor sit amet, consectetur adipiscing elit. Nam tincidunt, massa sed cursus bibendum, felis pede iaculis metus, eget viverra leo turpis vel enim. Aliquam erat volutpat. In tristique pretium nibh. Maecenas est. Curabitur cursus. Suspendisse dapibus dui auctor nisl.		
Q3 sales data	2	Betty
Q4 pipeline feed	1	
Market segmentation	1	Dan
Sales projections	3	
Issue list from team wiki	4	
Presentation template	3	Heather

Tags People Comments

Lead author
Samantha Daryn

Co-authors
Amadou Alain
Betty Brand
Dan Misawa
Heather Reeds

Reviewers
Gary Global
Amy Director

Invite authors/reviewers

Preview as: Presentation

Title	Executive summary	Q3 sales data
Slide 1	Slide 2	Slide 3
Q4 pipeline feed	Market segmentation	Sales projections
Slide 4	Slide 5	Slide 6
Issue list from team wiki		
Slide 7		

Choose format(s)

Format as...

- Presentation
- Microsoft Office document
- Portable document
- Data feed

Multimedia Presentation



"Orlando" Project Proposal
Presentation with voice-over

Publish...

Publish to...

- Social media site
- Team wiki
- Personal site

Community site

Post new entry

Profile
Communities
File
Blog
Bookmarks
Activities

Orlando Project Team

Back to My Places

The buzz
Here's a
10 Convo
Visit to t

What's New
Team Blog
Documents
Event's
Tasks
Issues
Wiki

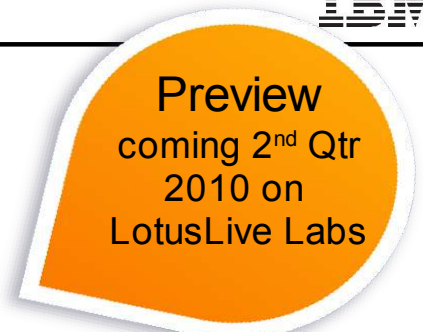
Samantha's Files

Public | Shared | All

Profile
Communities
File
Blog
Bookmarks
Activities

Project Concord

Web-basierte Bearbeitung



- Web-basierter Editor zur gemeinsamen Erstellung und Bearbeitung von Dokumenten, Präsentationen und Tabellen
- „Share“
Aus dem Editor heraus können die Inhalte anderen zur Weiternutzung zur Verfügung gestellt werden
- So einfach, dass es jeder nutzen kann, jedoch so robust, dass es den Ansprüchen vieler Business-User entspricht
- Unterstützt das Arbeiten in Teams, zur gleichen Zeit am gleichen Dokument
- Projekt Concord wird die Art ändern, wie Sie an Dokumenten arbeiten

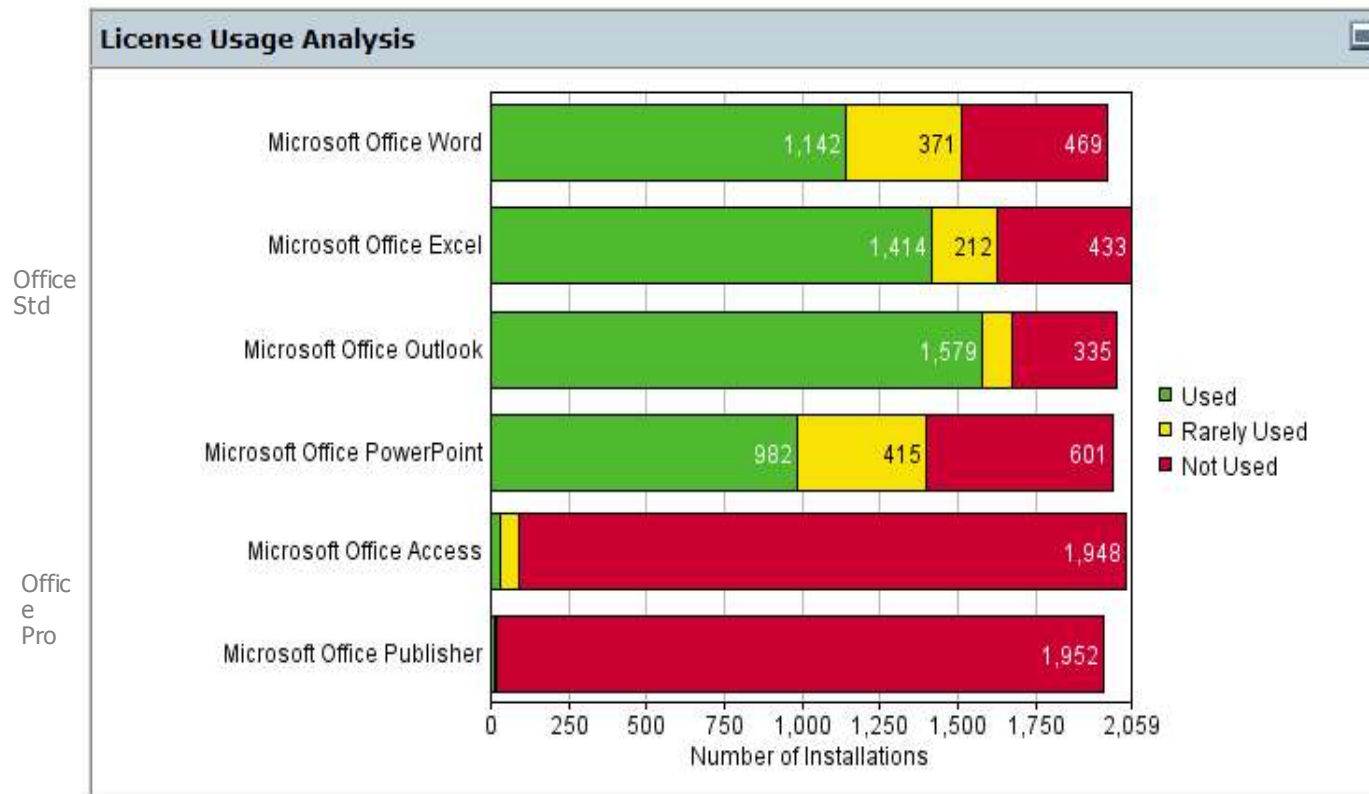
- ▶ Live Sections
- ▶ Gemeinsames Editieren
- ▶ Kontextkommentare
- ▶ Smart Tables
- ▶ Web Clipping
- ▶ Smart Tables
- ▶ Task und Attention Management
- ▶ Vorlagen



Inventarisierung und Nutzungsanalyse

Die meisten Benutzer nutzen nur einen kleinen Teil des Lieferumfanges eines Enterprise Agreements und würden ohne Einbußen mit Office Standard, Office Viewern oder einer kostenfreien OpenSource Alternative auskommen.

compartner



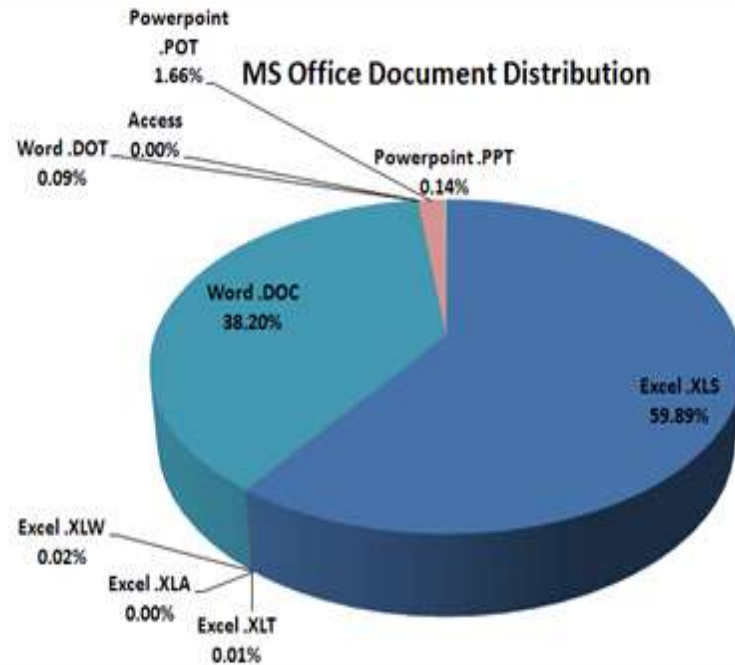
Analyse von Microsoft Office Dokumenten

Dokumentenscan auf Fileshares und Desktops

Kategorisierung in aktive und inaktive Dokumente

Report der unkritischen/kritischen Dokumente und deren Benutzer

Analyse der Komplexität und des Migrationsaufwandes



Go For It

<http://symphony.lotus.com>

Und unser Webcast kommende Woche:

Portal NOW – Portale brauchen Web 2.0-Funktionen

17.03.2010, 16:00 Uhr

<http://www.ibm.com/de/events/lotuswebcasts/anmeldung.html>

**Mittwoch
ist Lotus Tag!**

Mit der neuen IBM Lotus Webcast-Serie
„Smart people work smarter“.