



IBM Software

IBM Forms 4.0

Introduction to IBM Forms Designer

An IBM Proof of Technology



Objectives

- In this session, we will
 - ▶ Provide an overview of the IBM Forms Designer
 - ▶ Understand the different components of the Workspace
 - ▶ Learn the basic wizards that are available in the Designer
 - ▶ Discuss any questions or feedback



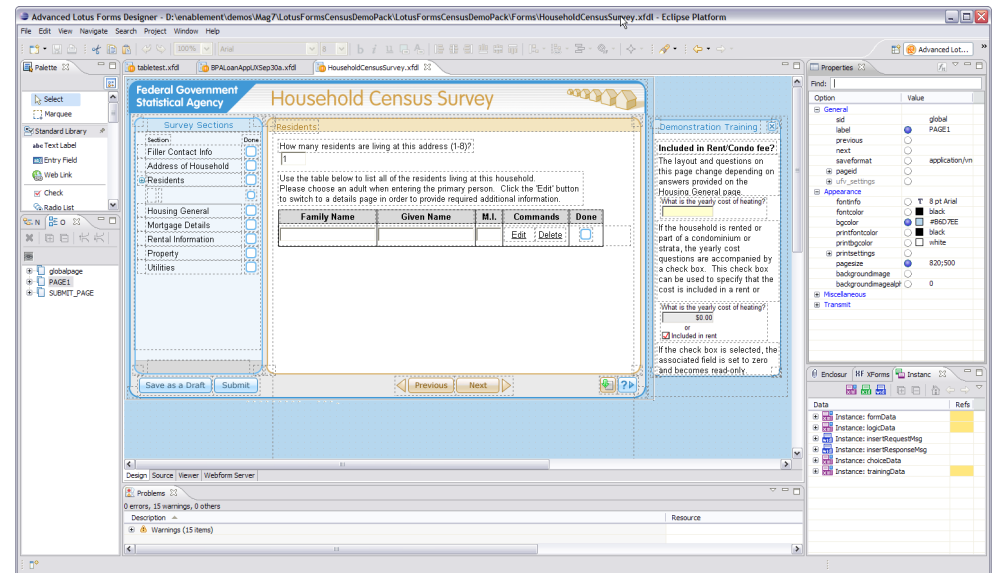
Agenda

- Introduction to the Workspace Components
- Standard vs. Advanced Perspectives
- Standard Library Widgets
- Form Parts
- Wizards
 - ▶ Form Wizard
 - ▶ Table Wizard
 - ▶ Signature Wizard
- Questions



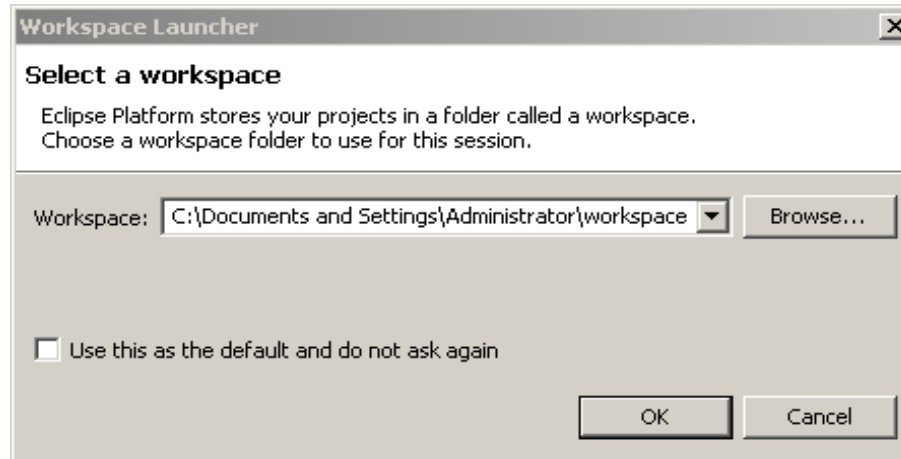
IBM Forms Designer 4.0 Overview

- Support for XForms Standard
- Forms Design Tool Based on Eclipse
- Model Driven Design
- Advanced Layout Functionality
- Component Re-usability
- Dynamic Tables
- Run-Time Preview
- Design Once, Render Many



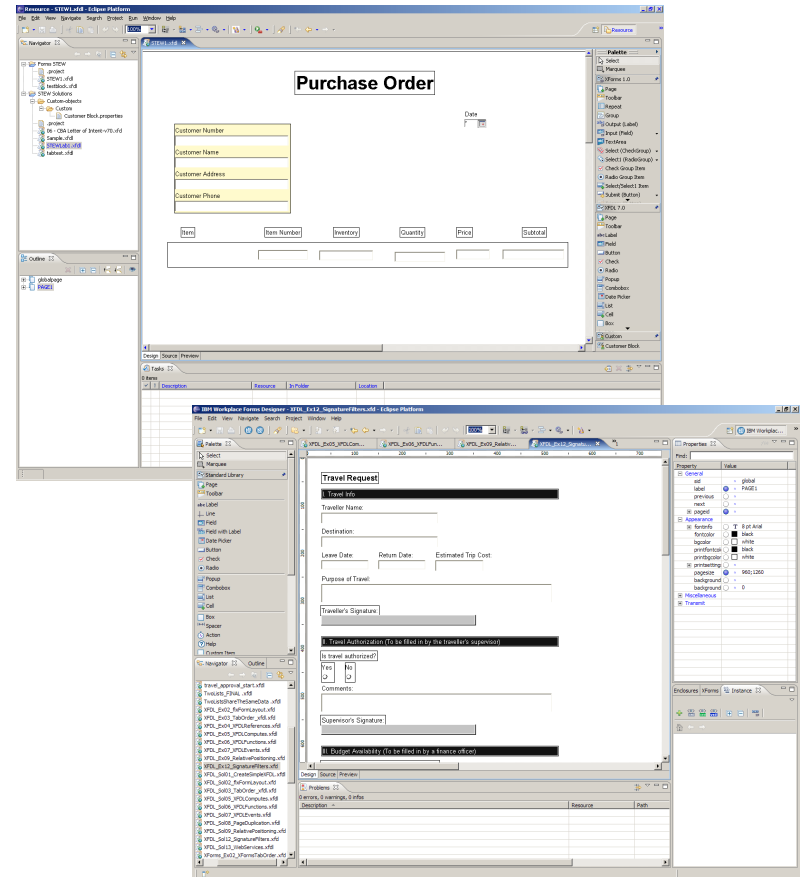
Projects

- A **Project** groups files related to a particular function or application
- All forms within the Forms Designer are part of a project
- Projects and files are stored in a **Workspace** (folder on disk)
 - ▶ You can choose the location of your workspace when you open the Designer
(defaults to C:\Documents and Settings\userid\workspace)
 - ▶ **File – Switch Workspace** to see what Workspace you are using



Perspectives

- **Perspectives** are arrangements of views and editors
 - ▶ Define what views are present and where they appear on the screen
- Different perspectives are suited to different user tasks
 - ▶ Eclipse Platform includes standard perspectives
- Task orientation limits visible views, actions
 - ▶ Perspectives control
 - View visibility
 - View and editor layout
 - Action visibility
- Users can create/customize/save perspectives to meet their needs



Views

- **Views** are movable/sizable windows that provides specific functionality
- A view can belong to more than one perspective
 - ▶ Some views ship with Eclipse
 - ▶ Some ship with the specific plugin
- Modifications are saved immediately
- Double-clicking the tab of a view (except on the x) expands it to fill the window
- Clicking the x closes the view
- To reopen, **Window – Show View – Other...** and select the view you want to open



Designer Workspace Components

Standard Perspective

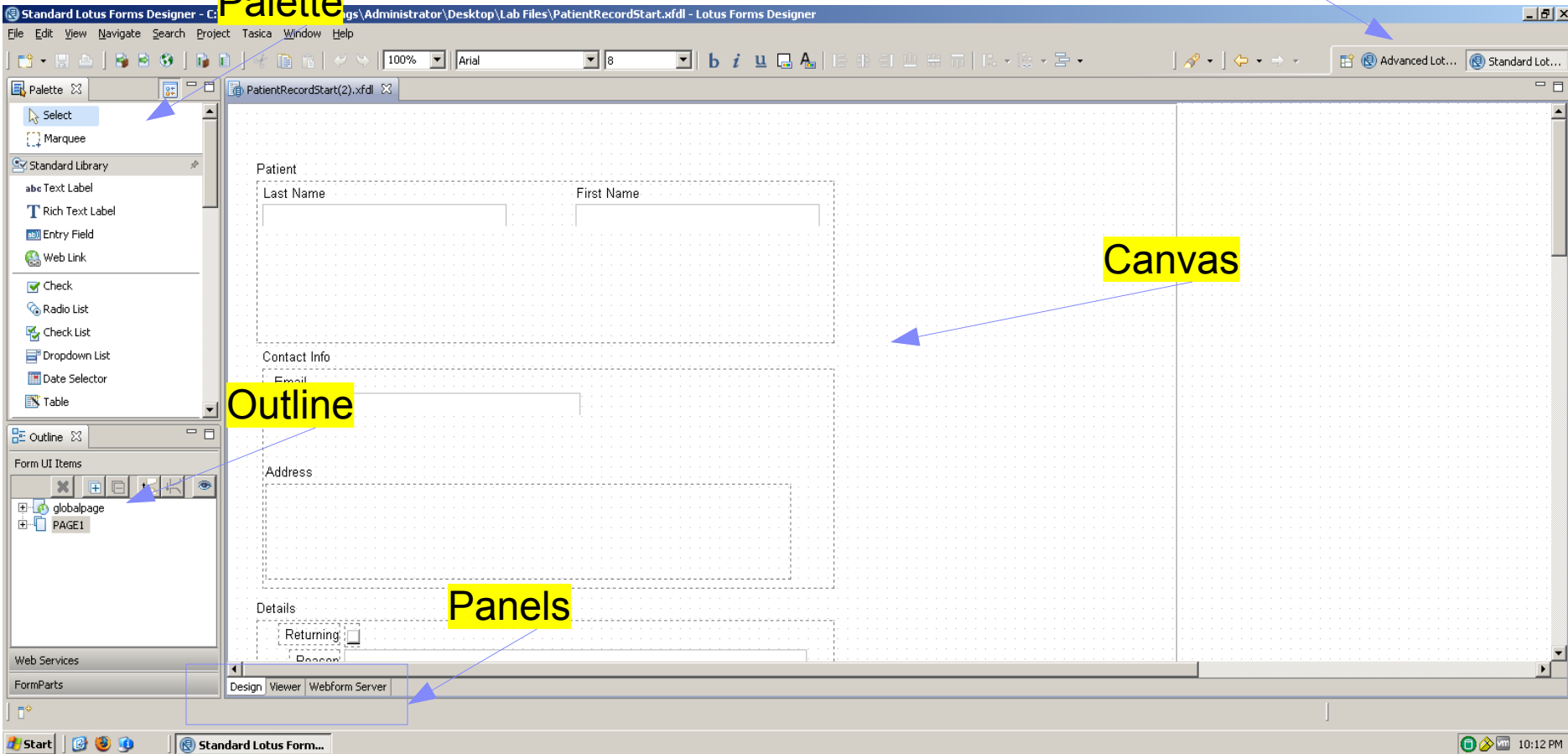
Perspective

Palette

Canvas

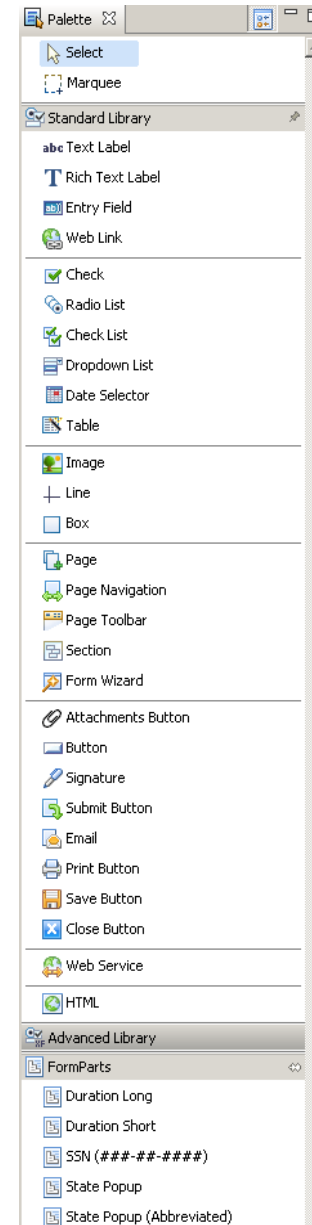
Outline

Panels



Palette View

- Can be placed anywhere in the Designer window
- Custom items can be added as FormParts
- Items are stored in logical sections and drawers

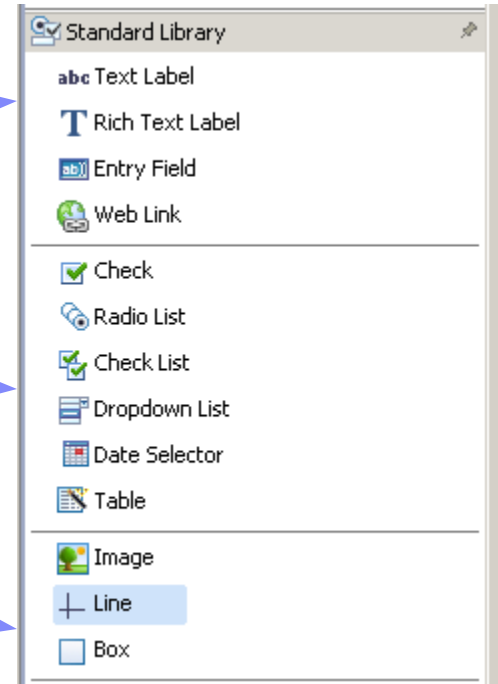


Standard Library Widgets

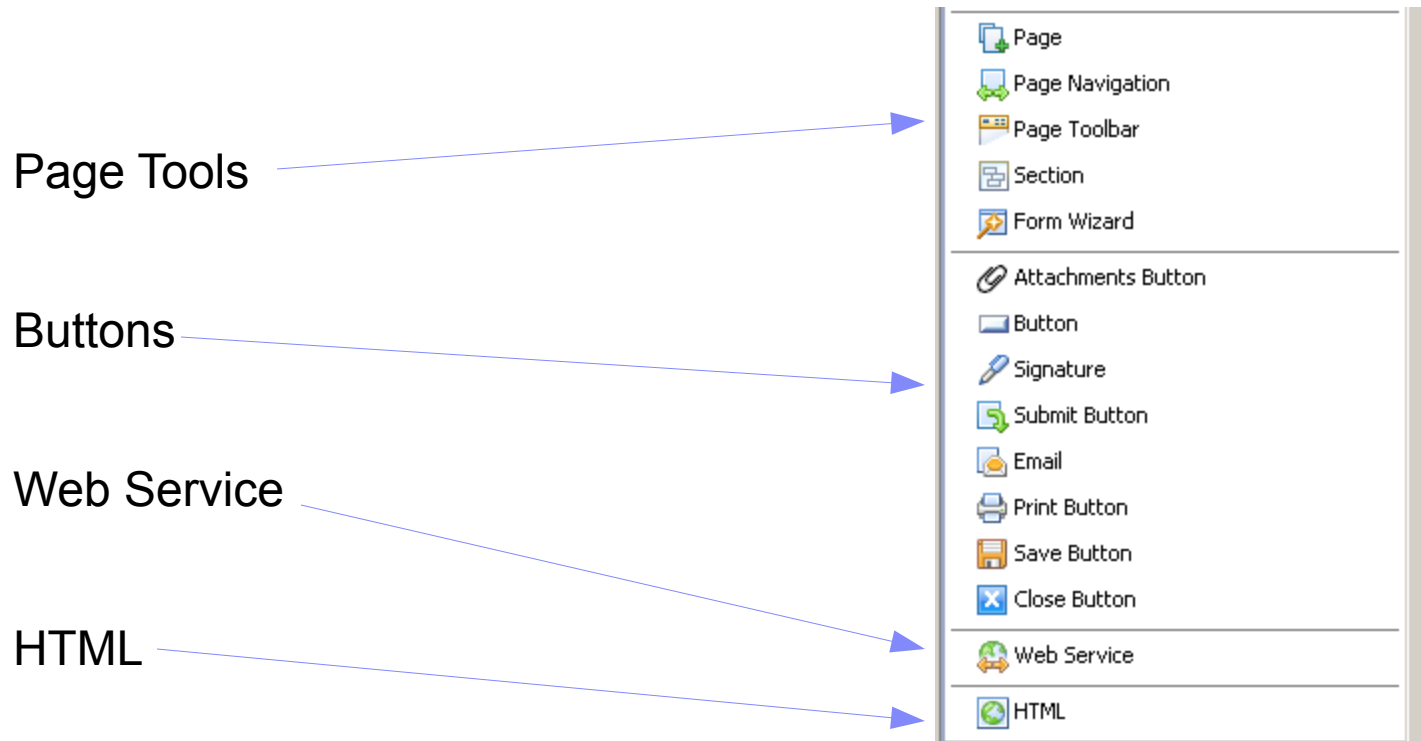
Basic Fields

Multiple Entry Fields

Drawing Tools



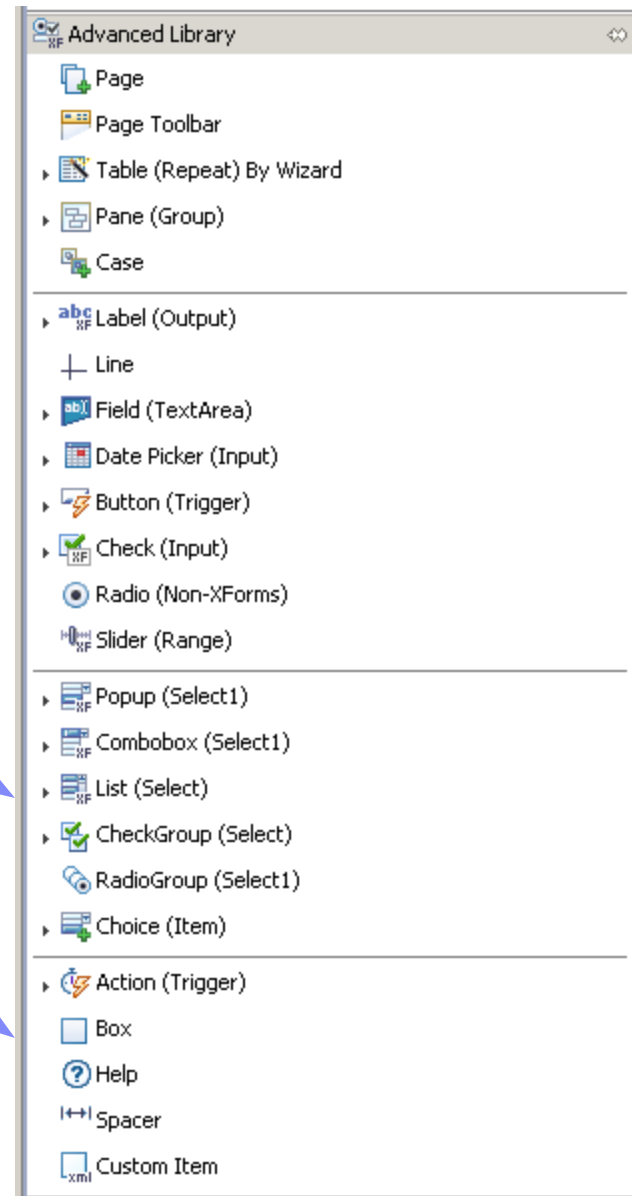
Standard Library Widgets (cont.)



Advanced Library Widgets

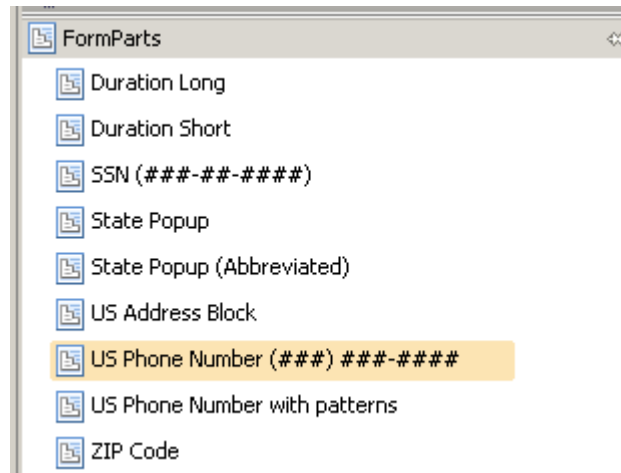
Advanced Page Tools

Advanced Xforms and XFDL
Widgets



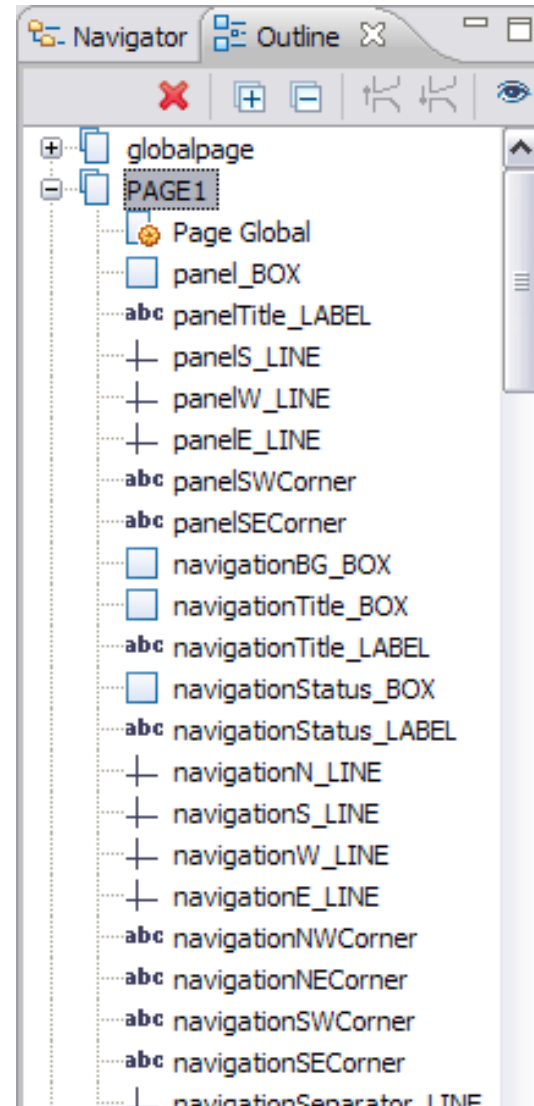
Form Parts

Form Parts are custom library widgets that are shared across multiple forms, and can be updated once and inherited across all forms. Below is a list of out-of-the-box Form Parts.



Outline View

- Hierarchical structure of all form objects
- Selecting an object highlights it in the Design canvas
- Can change build order using drag and drop
 - ▶ Default tab order
 - ▶ Relative alignment
- Useful for finding invisible objects
- Filter on visible displays only selected items in Design canvas



Forms Designer Advanced Perspective

The screenshot displays the IBM Forms Designer Advanced Perspective interface. The central workspace is an empty page with a dotted grid background. The interface includes several key components:

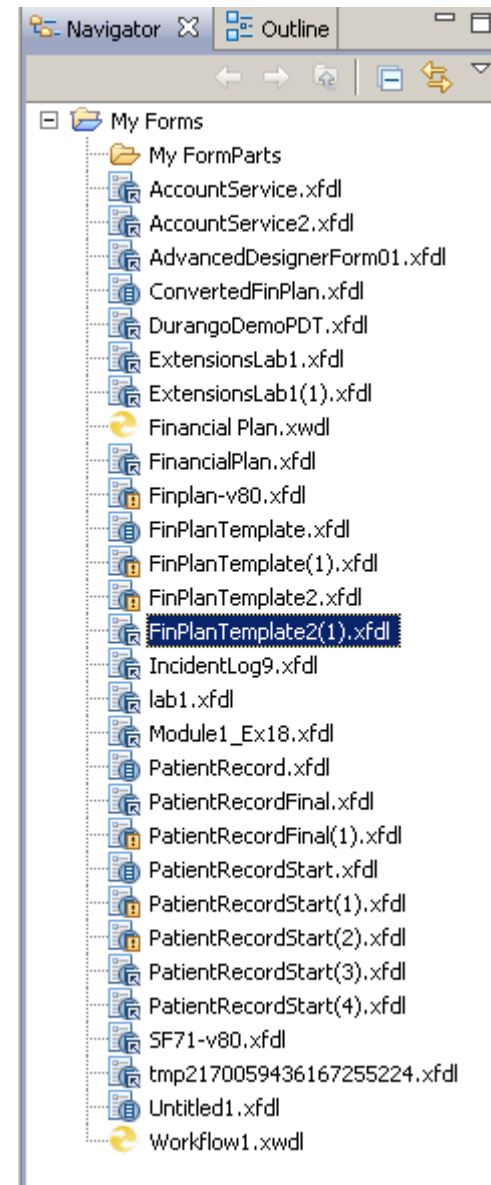
- Properties Panel:** Located on the right, it shows a table of options and values for the selected element.

Option	Value
General	
sid	global
label	<input checked="" type="radio"/> PAGE1
previous	<input type="radio"/>
next	<input type="radio"/>
saveformat	<input type="radio"/> application/vnd.xfdl
pageid	<input type="radio"/>
enclosuresettings	<input type="radio"/>
Appearance	
fontinfo	<input type="radio"/> 8 pt Arial
fontcolor	<input type="radio"/> black
bgcolor	<input type="radio"/> white
printfontcolor	<input type="radio"/> black
printbgcolor	<input type="radio"/> white
printsettings	<input type="radio"/>
pagesize	<input type="radio"/> 960;1260
backgroundimage	<input type="radio"/>
backgroundimagealpha	<input type="radio"/> 0
Transmit	
- Enclosures Panel:** Located below the Properties panel, it shows a tree view of the form's structure, including a 'Data' section with an 'Instance: Generated' entry.
- XForms Panel:** Located below the Enclosures panel, it provides options for XForms rendering.
- Instance Panel:** Located below the XForms panel, it shows the current instance of the form.
- Source Panel:** Located at the bottom left, it shows the source code of the form.
- Navigator:** Located on the left side, it provides a hierarchical view of the form's components, including 'globalpage' and 'PAGE1'.



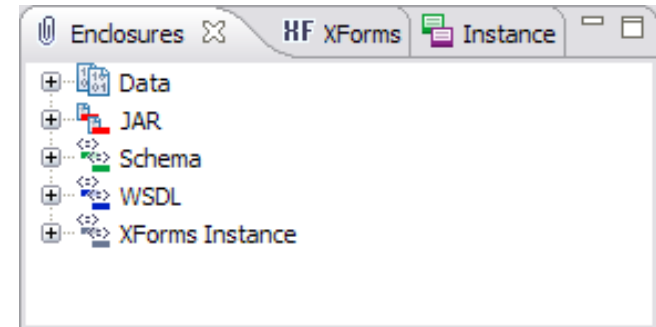
Navigator View

- ▶ Shows projects and files for workspace
- ▶ Double-clicking opens file in default editor
- ▶ Local history allows compare with previous versions



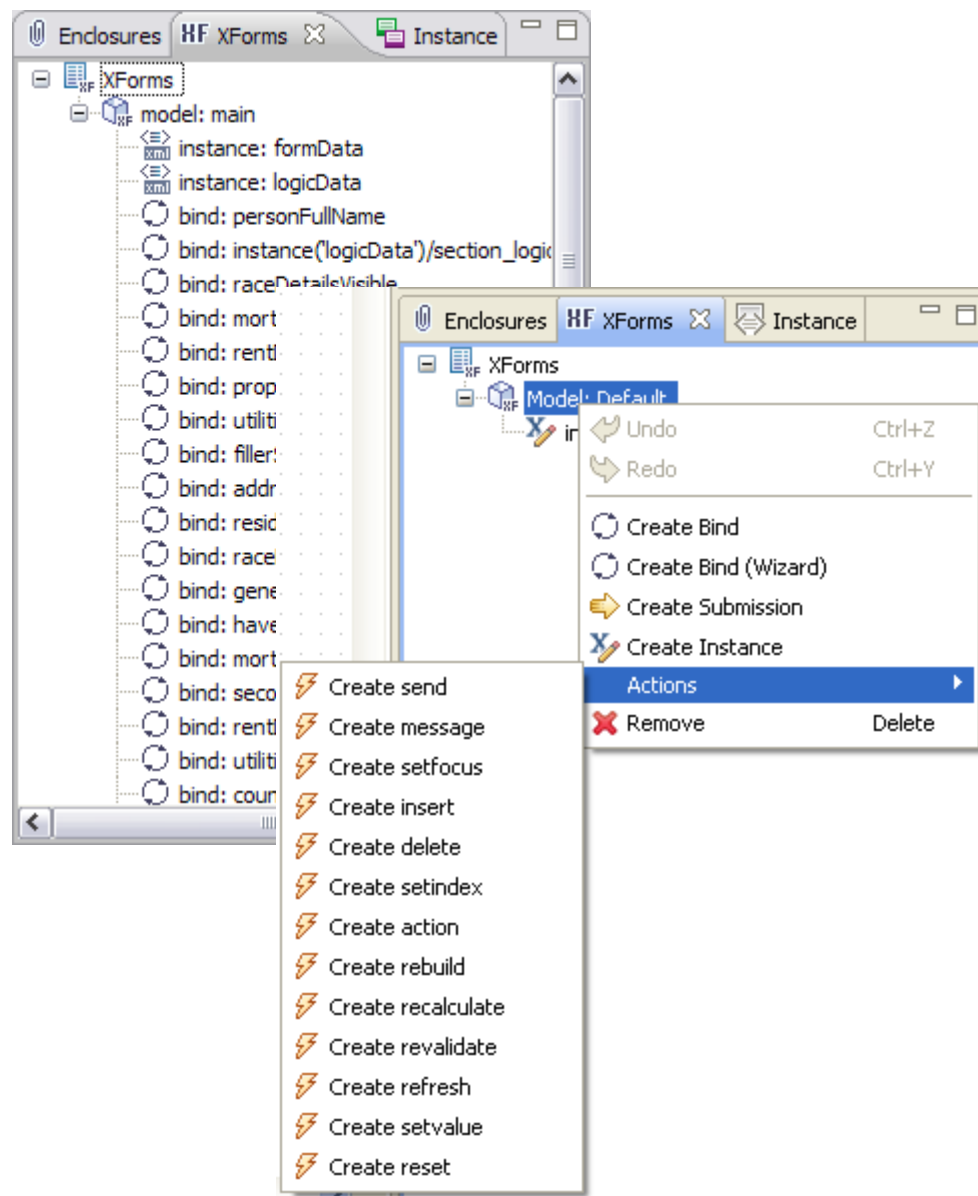
Enclosures View

- Provides ability to embed objects within the form
 - ▶ Data
 - Image files (e.g.. .gif, .png, .bmp, .tif)
 - Can be displayed in label or button
 - ▶ Jar
 - Extensions for additional functionality
 - ▶ Schema
 - Only if the form has an XForms model
 - ▶ WSDL
 - For Web Services
 - ▶ XForms Instance
 - Arbitrary block of XML code



XForms View

- One model by default
 - ▶ More than one supported
- Displays the model's:
 - ▶ Schemas
 - ▶ Instances
 - ▶ Binds
 - ▶ Actions



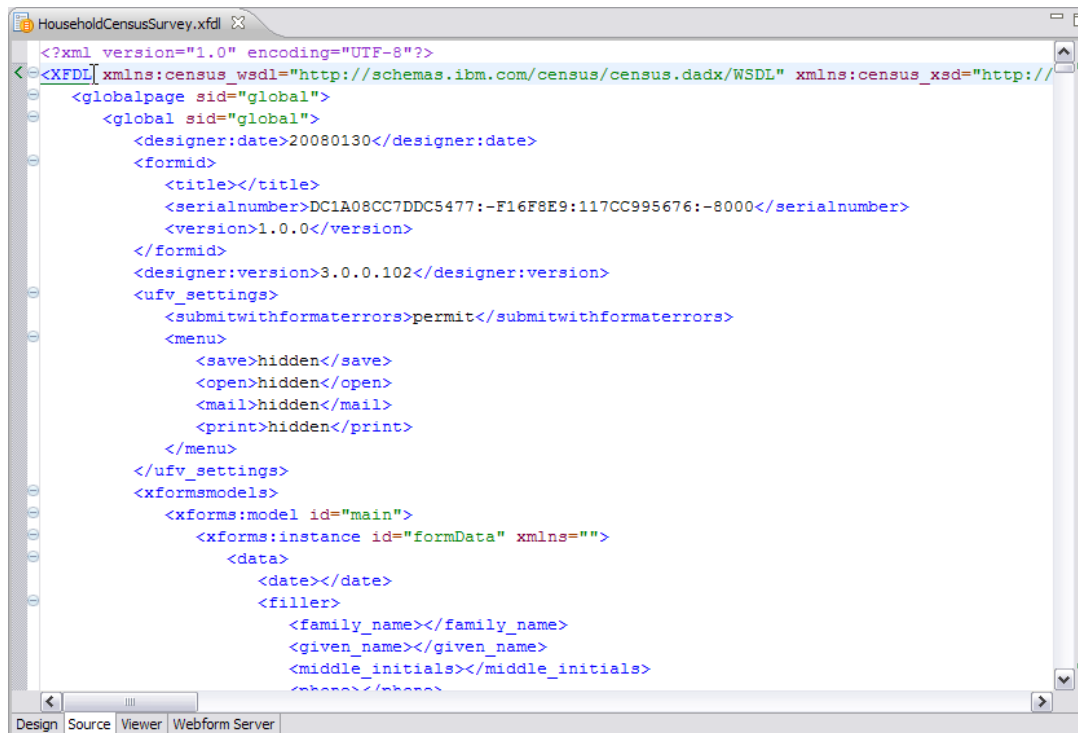
Instance View

- The Instance view shows XForms data instances
- Allows for four ways to create
 - ▶ Manually – create default instance, add elements
 - ▶ Generate based on existing form
 - ▶ Create based on schema
 - ▶ Create based on wsd

Data	Refs	Public
Instance: formData		
xmlns: = <empty>		
data		
date	2	NO
+ filler		
+ address		
+ residents		
+ housing_general		
+ mortgage_details		
+ rent_details		
+ property		NO
+ utilities		
+ Instance: logicData		
+ Instance: insertRequestMsg		
+ Instance: insertResponseMsg		
+ Instance: choiceData		
+ Instance: trainingData		

Source Panel

- Shows underlying source code (XFDL) – can be edited
- XML editor is XFDL aware – allows code completion/content assist
- Cannot leave if there are errors



```
<?xml version="1.0" encoding="UTF-8"?>
<XFDL xmlns:census_wSDL="http://schemas.ibm.com/census/census.dadx/WSDL" xmlns:census_xsd="http://
  <globalpage sid="global">
    <global sid="global">
      <designer:date>20080130</designer:date>
      <formid>
        <title></title>
        <serialnumber>DC1A08CC7DDC5477:-F16F8E9:117CC995676:-8000</serialnumber>
        <version>1.0.0</version>
      </formid>
      <designer:version>3.0.0.102</designer:version>
      <ufv_settings>
        <submitwithformaterrors>permit</submitwithformaterrors>
        <menu>
          <save>hidden</save>
          <open>hidden</open>
          <mail>hidden</mail>
          <print>hidden</print>
        </menu>
      </ufv_settings>
      <xformsmodels>
        <xforms:model id="main">
          <xforms:instance id="formData" xmlns="">
            <data>
              <date></date>
              <filler>
                <family_name></family_name>
                <given_name></given_name>
                <middle_initials></middle_initials>
                <phone></phone>
```

Basic Designer Wizards

Form Wizard Creator

Selecting a template

You can create a new wizard template by typing header text and adding an image, or by importing an existing template.

Create new template:

Header text:

Select header image:

Import existing template:

Initial number of wizard pages:

Signature Editor - Create a new signature

Technology: What is signed: Appearance

What signing technology does the signature use?

Select the signature technology and edit the detail settings if required

Authenticated Clickwrap

Authenticated Clickwrap signatures work like normal Clickwrap signatures, except they also incorporate a shared secret. Typically, this shared secret is a user ID and password. When you sign the form, you provide your shared secret as part of the signature, using the typical Clickwrap question and answer system. When you submit the form, the server then creates a second signature using its copy of the shared secret, and compares it to the signature in the form. If the signatures match, then the server has positively identified you as the signer, and the server then countersigns the form with a digital signature.

Click a text field below to configure its appearance. The signing ceremony launches when the user clicks to sign the form.

Click Wrap Signing Ceremony

Explain the signing ceremony to users

The main text of the agreement

User Name:

Password:

Confirm:

Click to add a Question

Click to add a Question

Click to add a Question

Instruct the user to enter the Echo Text

Click to add Echo Text

Click the Accept button to sign.

Advanced Settings

Table Editor

Define Columns and Rows

Define the number of columns and rows in the table.

model. Names cannot

item
price
qty
cots

All rows

rows at a time

OK Cancel

< Back Next > Finish Cancel



Presentation Summary

- In this session, we have had a chance to:
 - ▶ Provide an overview of the IBM Forms Designer
 - ▶ Understand the different components of the Workspace
 - ▶ Learn the basic wizards that are available in the Designer
 - ▶ Discuss any questions or feedback



Questions





Thank You

We appreciate your feedback.

Please fill out the survey form in order to improve this educational event.

