



IBM Software Group

Quickr Entry

Personal File Sharing

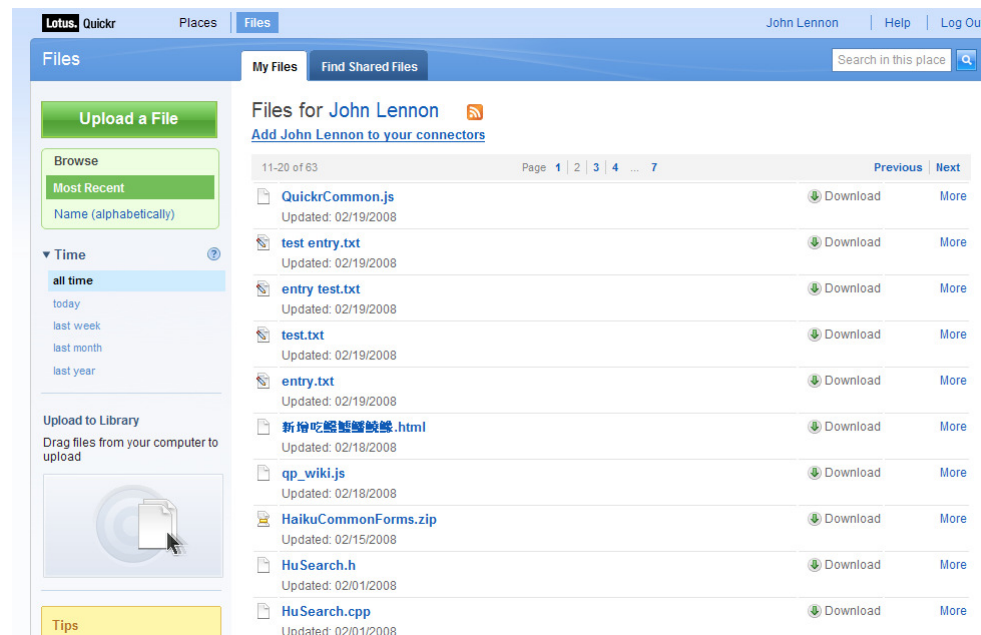
An IBM Proof of Technology



Presentation objectives

- Discuss the value of simple file sharing using IBM® Lotus® Quickr™ Entry
- Describe how Quickr Entry is set up, and how it can be used
- Compare and contrast with Quickr Standard capability

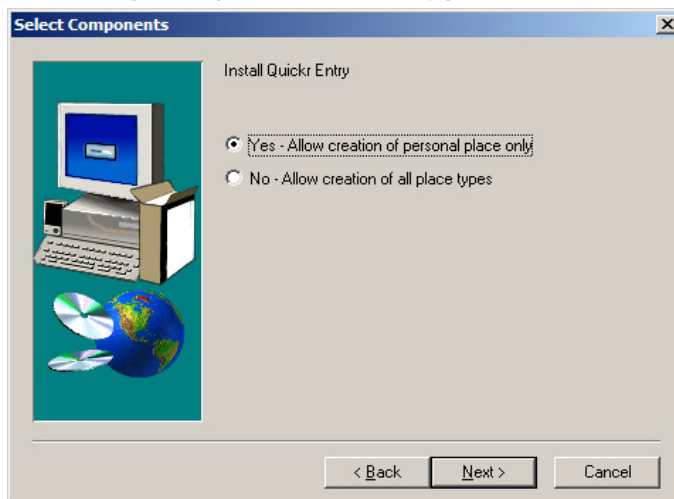
Overview



- Quickr Entry is a new offering for Quickr IBM Lotus Domino® 8.1
- Entry provides a simplified library used for uploading/sharing files
- Entry implements the new OneUI initiative
- Each Person has his/her own “place”, which is provisioned by the Administrator
- Owners can flag files as “Unlisted”, which means they will not be visible in the list to non-owners, but can be linked in emails
- Entry places are accessed via the browser or Quickr Connectors
- Entitlement is free to customers with current IBM Lotus Notes ® /Lotus Domino Web Access licenses

Install/Configure

- Same install used for Quickr Entry and Quickr Standard
- Installation will prompt for which type of server to install:



- Configuring Quickr Entry is similar to configuring Quickr Standard in many ways.
 - ▶ Still need to login using Quickr Admin specified during install. Admin can then configure all security/ldap settings.
- After installation, there is a configuration setting in the notes.ini file which determines whether the installation is an Entry server or a Standard server.
 - ▶ QRD_Install_Type
 - 1 = Entry Server (Shows Entry UI only)
 - 2 = Standard Server (Shows both Entry and Standard UI)
 - 3 = Standard Server (Shows Standard UI only)

Provisioning

- Quickr Entry places are provisioned by the Administrator only, they are NOT automatically created.
- Provisioned using the qptool “createentryplace” on the Server console.
 - ▶ ex: `load qptool createentryplace -e lsuarez@demoibm.com -d “Lucille Suarez”`
 - ▶ Creates the place using the special Entry template
 - ▶ Sets the Membership access for the owner – all other users are readers
 - ▶ Server configuration determines whether anonymous access is granted to Entry places
- Can also be provisioned in bulk using the `-i` parameter and providing an XML file

Find Shared Files

- Page is used to type in/lookup email address of user to go to his/her Entry place
- Lookup starts when the user starts typing into the field - a list of matches will show below the box.

My Files Find Shared Files

Personal File Sharing
Access files shared by your colleagues. Enter a person's name (enter last name or first name)or email address and click Search.

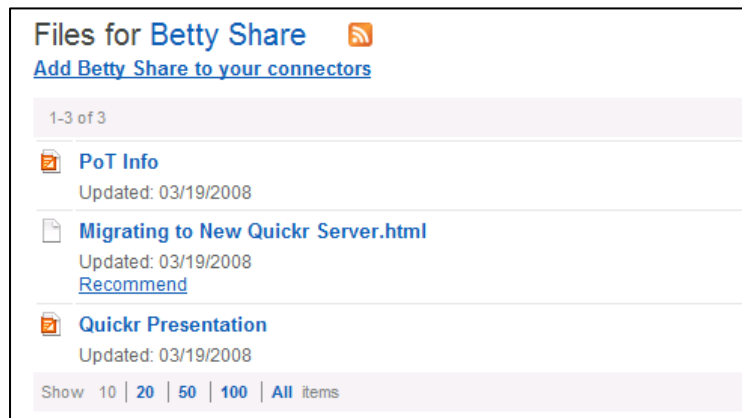
b Search

- Jane Bath (JBath@demoibm.com)
- Judith Batista (JBatista@demoibm.com)
- Clare Boothe (CBoothe@demoibm.com)
- John Boswell (JBoswell@demoibm.com)
- Peter Brown (PBrown@demoibm.com)
- Andy Brunner (ABrunner@demoibm.com)
- Benjamin Tanner (BTanner@demoibm.com)
- Betty Zechmann (BZechmann@demoibm.com)

- Once the user types in/clicks on the email address, he/she clicks on “Search” to forward to that person’s place (if one has been provisioned)

The List View

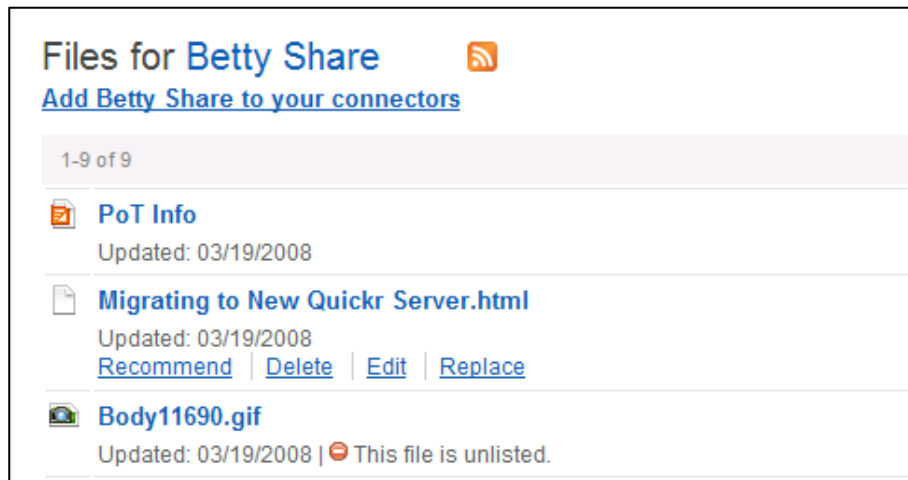
- Greatly simplified
- Users click the main link to get to a detailed page
- Users can click the “Download” link to directly download the file



- Users can click the “More” link to see the description for the file and they can “Recommend” it to another user
 - ▶ Recommend currently sends an email containing a link
- System will remember which page count, view, sort, and filter the user last used

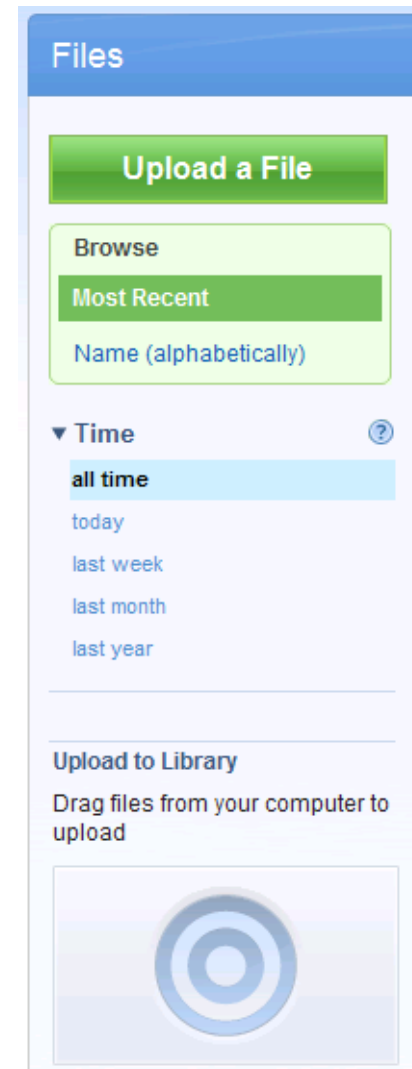
The List View

- Owners can click the “More” link to see additional actions:
 - ▶ Delete: Owner can delete the file
 - ▶ Edit: Owner can edit the title, description, or unlisted flag for the file
 - ▶ Replace: Owner can replace the uploaded file with a new one



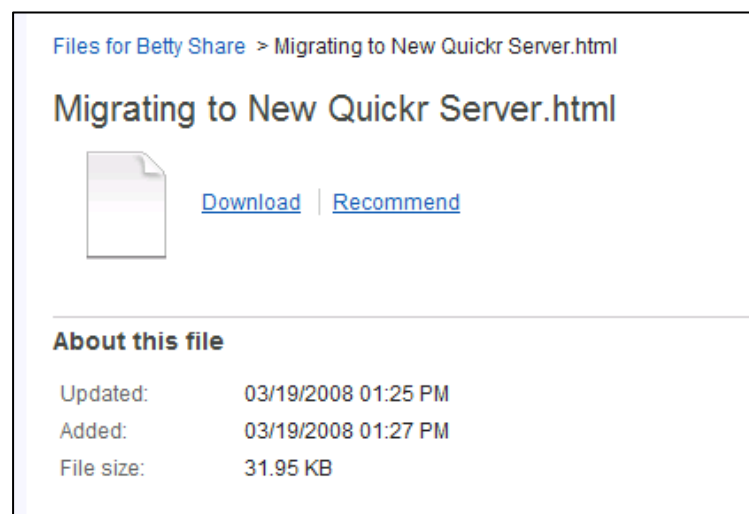
The List View

- Uploading of files can be done 3 ways:
 - ▶ Using the “Upload” button to open the inline form.
 - ▶ Drag and Drop files from your OS to the applet in the left pane
 - ▶ Using the Connectors



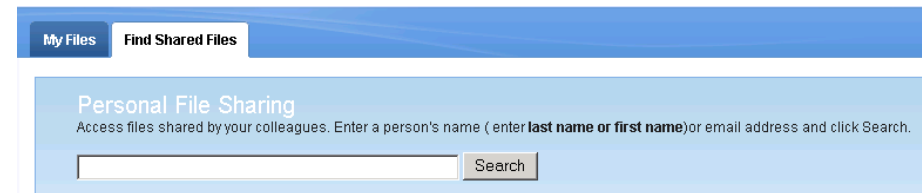
The Page View

- Shows detailed information about the uploaded file
- All the same actions available here as the List view
- Used as a “landing page” if Owner/User wants to link to a particular file



Entry on a Standard Install

- If the Admin installs a Standard Quickr 8.1 server, the Entry links are still visible
 - ▶ Entry can be hidden using notes.ini parameter
- Users will see two links at the top of the page:
 - ▶ “Places” link will show the Quickr Standard UI.
 - ▶ “Files” link will show the Quickr Entry UI



- Membership is not exposed in the Entry template.
 - ▶ Place owner is the “Manager”
 - ▶ Anonymous/Default users are “Readers”
- List of files rendered completely using AJAX
 - ▶ Reads the file entries from the Domino view using AJAX.
 - ▶ Including paging, sorting, searching, and filtering of files.
- qpservlet is required for Entry to function
 - ▶ Interface is primarily AJAX based

Questions





IBM Software Group

Lab #3

Using Quickr Entry

An IBM Proof of Technology



Lab overview

- In this lab, you will explore the use of Quickr Entry to locate for files stored by other users, and store files to share with other users.
- The goals of the lab are to:
 - ▶ Experience the value of simple file sharing using Quickr Entry
 - ▶ Validate and how it can be used
 - ▶ Compare and contrast with Quickr Standard capability
- Quickr Entry Lab can be found in the Lab Workbook