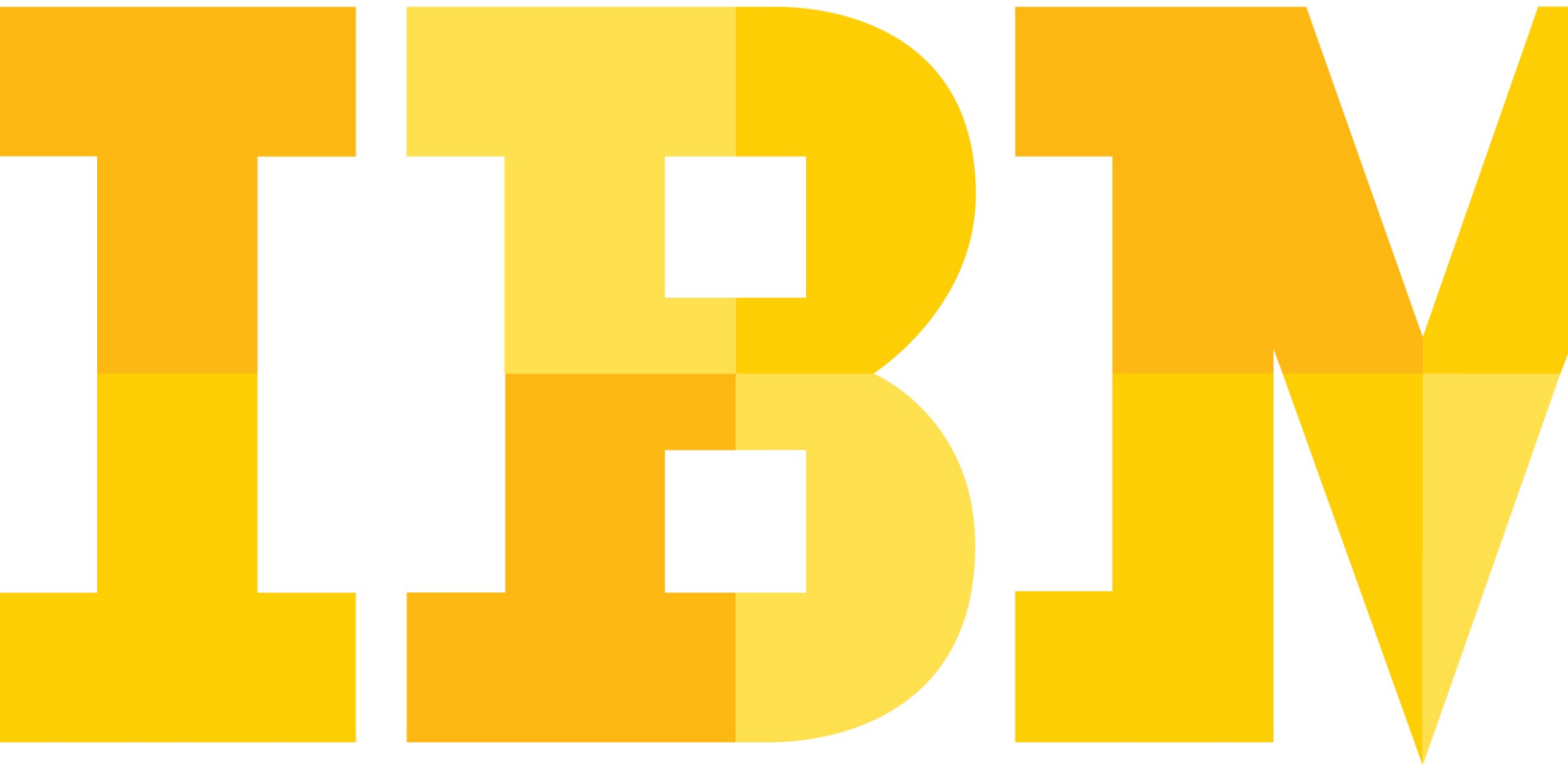


Discovering the value of IBM Lotus Sametime 8.5

Lab Exercise 4: Using the Sametime Proxy Webclient



An IBM Proof of Technology

PoT.Lotus.08.5.020.02

Table of Contents

LAB 4 OVERVIEW	4
LAB 4 SAMETIME COMMUNITY ACCESS WITH THE SAMETIME PROXY WEBCLIENT	5
4.1 USING THE LOTUS SAMETIME 8.5 PROXY WEBCLIENT.....	5
4.2 LAB 4 REVIEW.....	16

Lab 4 Overview

Enterprise instant messaging (IM) is often the first point of contact when reaching out to colleagues. Quick text chats can answer simple questions outright. People don't have to wait for the response to an email or a phone call, so they can be more productive. Text chats and built-in voice and video can eliminate calls and reduce your telephony expenses. IBM Lotus® Sametime® software delivers enterprise instant messaging with the security features, reliability and scalability that enterprises require.

IBM Lotus Sametime 8.5 software gives you award winning and market leading instant messaging capabilities that help you collaborate and keep pace with your real-time work environment. The software includes several Instant Messaging clients, all to help your employees to connect and collaborate from their choice of software.

Clients include:

- **Lotus Sametime Connect Client** - a stand-alone Eclipse application;
- **Lotus Notes embedded Sametime client** - an Instant Messaging client embedded in the side-bar of Lotus Notes Software;
- **Lotus Sametime Web Client** - an Instant Messaging client available on the web;
- **Lotus Sametime Mobile Clients** - support for the Lotus Sametime client on your mobile phone, whether it's a BlackBerry phone, Windows Mobile, iPhone, Symbian ..etc;
- **Integrated clients** - integrated into different applications, such as Microsoft Outlook, the Microsoft Office tools, and other business applications.

This lab will cover the *Lotus Sametime 8.5 Proxy Webclient*.

Welcome to Lotus Sametime in a browser! Lotus Sametime gives you quick and easy access to your colleagues. It lets you exchange text chats, send announcements, and control who can see you online, all from a Web browser. And, depending on which features are available to you, you might even be able to create and participate in meetings and make and receive calls using Lotus Sametime.

By the end of this lab you should be able to:

- Understand the Sametime 8.5 Proxy Webclient
- Use the collaboration features available in the Lotus Sametime 8.5 Proxy Webclient
- Understand how the webclient can provide a web based solution for Sametime Community access.

Lab 4 Sametime Community access with the Sametime Proxy Webclient

In this section of the hands-on lab exercises, you will explore using the **Sametime Proxy Webclient**.

In the following lab you will:

- Access the Webclient
- Get familiar with the Sametime Webclient
- Start a chat session
- Start a meeting
- Use features such as privacy and group usage.

4.1 Using the Lotus Sametime 8.5 Proxy Webclient

In another lab, it was shown that the Sametime Connect client is the entry point into the Sametime Community. That client can be used as a stand-alone client or as an embedded client in Lotus Notes. But what about users who need a lighter client, or need to access the capabilities of Sametime from within other applications? That is the sweet spot for the Sametime Proxy Webclient. A DHTML, zero-install light client that can be used as-is, or extended using the Sametime Proxy SDK. Let's take a look at the client.

- ___1. If you are using this lab as the first lab, then you will need to start the VMware image for the DemoClient. Once the Windows Logon screen appears, enter in **lotus4me** as the password. Continue to step 2 once the operating system is fully loaded.
- ___2. Access the client. On your desktop, double click on the following Mozilla Firefox icon. You may use Internet Explorer if you wish.

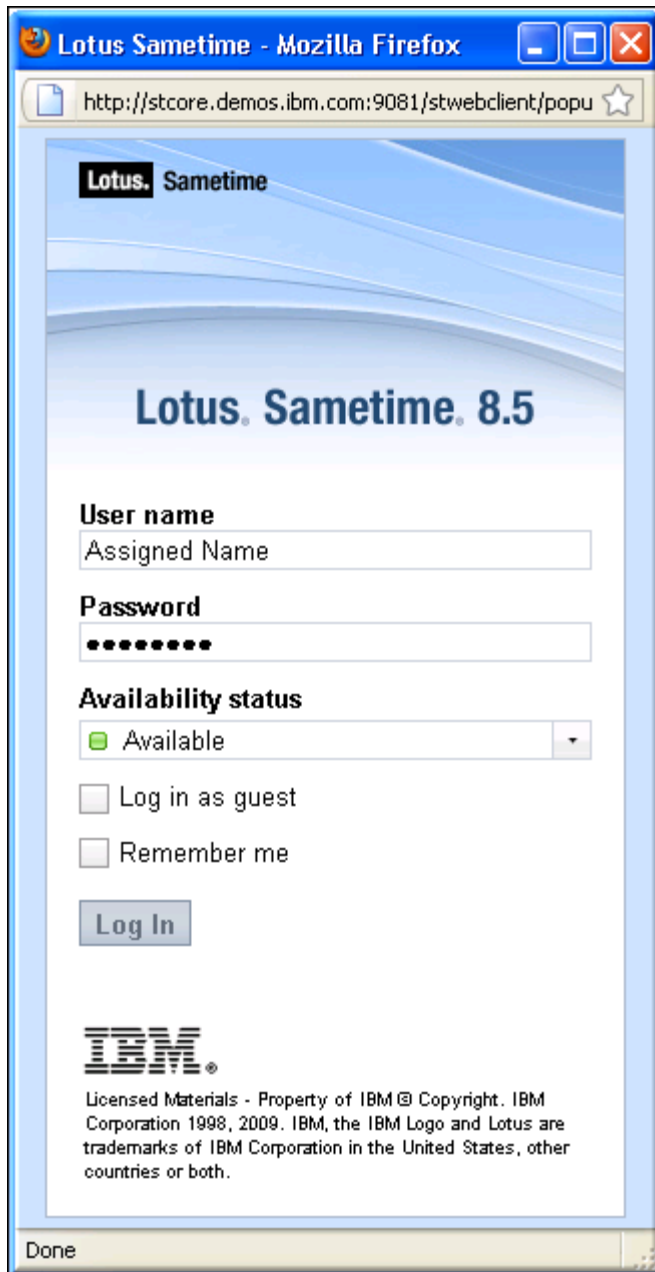


- ___3. Enter in the following URL: <http://stcore.demos.ibm.com:9081/stwebclient/index.jsp> In practice, the Sametime Proxy server would be installed on its own machine and could be configured to run on port 80. You may also click on the Sametime Proxy toolbar link in either browser.

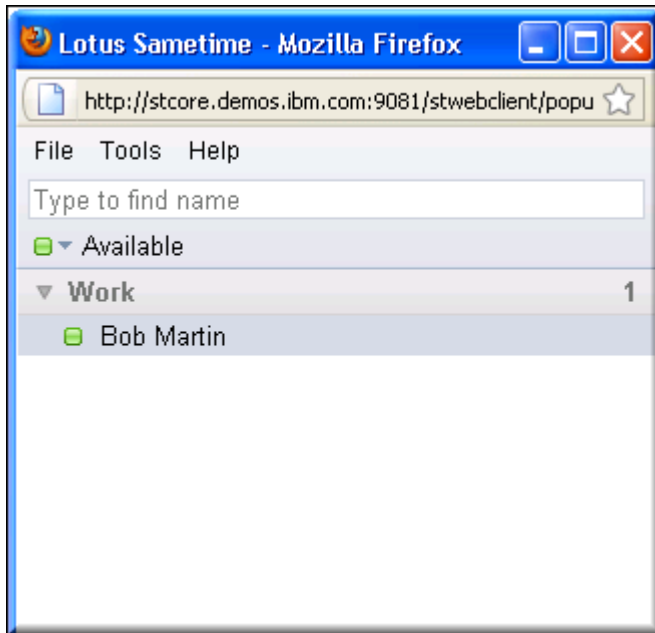
- __4. You should now see a page with a button in the middle like the one shown below. Click on the “launch Sametime” button to launch the client.



5. A new window will load containing the login inputs for the Sametime Proxy WebClient. Enter in the name that was assigned to you for the lab and use the password **lotus4me**. Now click the **Log in** button. Notice that you also have options to “Login as a Guest” and to set your status before logging into the system.

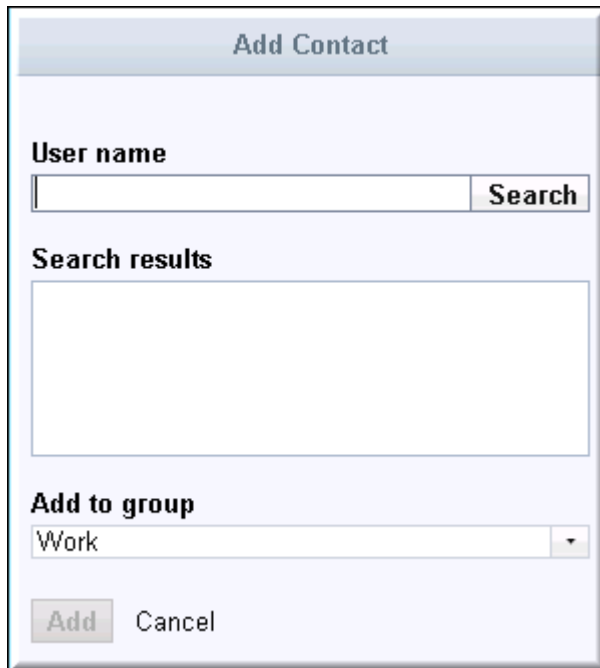


- __6. You now see the full client. No prompts to install, or loading of Java™ applets. Just JavaScript® and HTML. Take a second to look over the client.



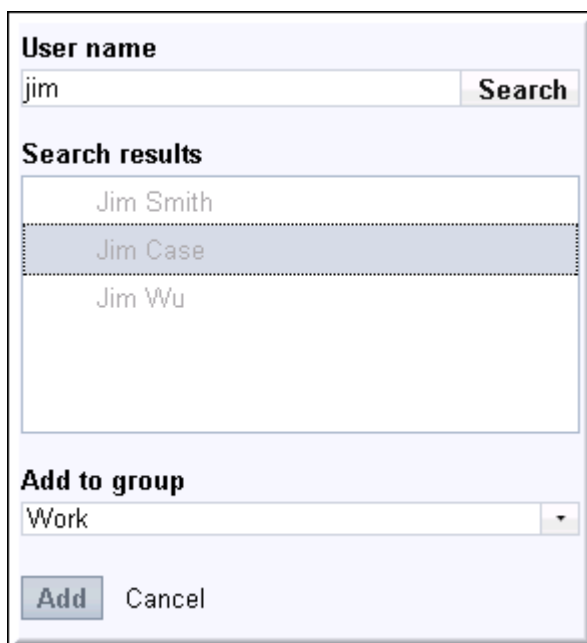
At this point we have a single user in our contact list, which is yourself. However, there may be other users in your list if this lab was not the first one performed. Keep in mind that the contact list is kept on the Sametime server. So when you log in with the Sametime Connect client you pull the list from the server, and when you login with the Sametime Proxy Webclient, you retrieve the same contact list. This allows greater mobility for users to move between machines and locations.

- __7. Let's add a user to our contact list. From the menu bar, choose **File-->New Contact**. The window will change to the 'Add Contact' screen.



The screenshot shows a dialog box titled "Add Contact". It has a light blue header bar with the title. Below the header, there is a section labeled "User name" with a text input field and a "Search" button. Underneath is a section labeled "Search results" with an empty rectangular area. Below that is a section labeled "Add to group" with a dropdown menu showing "Work". At the bottom, there are two buttons: "Add" and "Cancel".

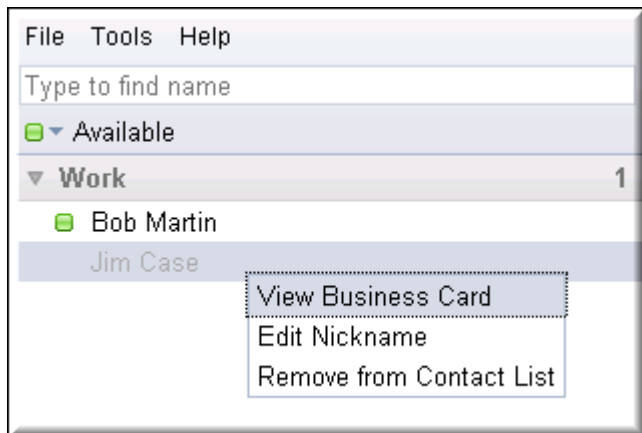
- __8. Enter in the assigned user name of the person sitting to your left, or to see the partial search capabilities, enter in "Jim" and click on **Search**.



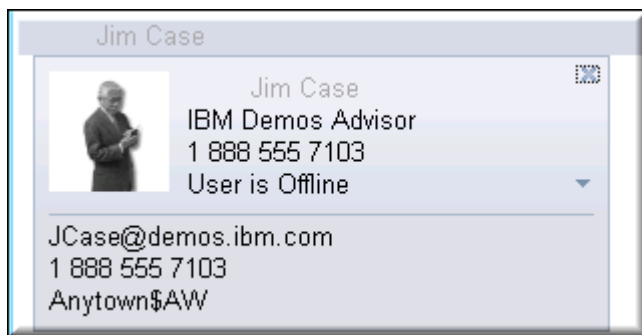
The screenshot shows the same "Add Contact" dialog box as in the previous image, but now the "Search results" area contains three entries: "Jim Smith", "Jim Case", and "Jim Wu". The "Jim Case" entry is highlighted with a grey background. The "User name" field now contains the text "jim". The "Add" button is now active (greyed out).

- __9. In the search results, notice that 3 Jims returned. Selecting one of the Jims and clicking **Add** will add that person to the contact list in the selected group.

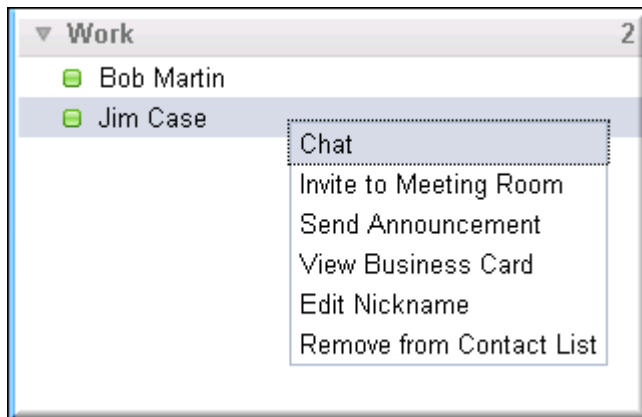
- __10. Now that we have a new contact in the list, let's take a look at what we can do with them. If you right click on the contact name a menu will appear with options for viewing the business card, or editing the name of the contact as seen in the list, or to remove them from the list entirely. Try clicking on the "View Business Card".



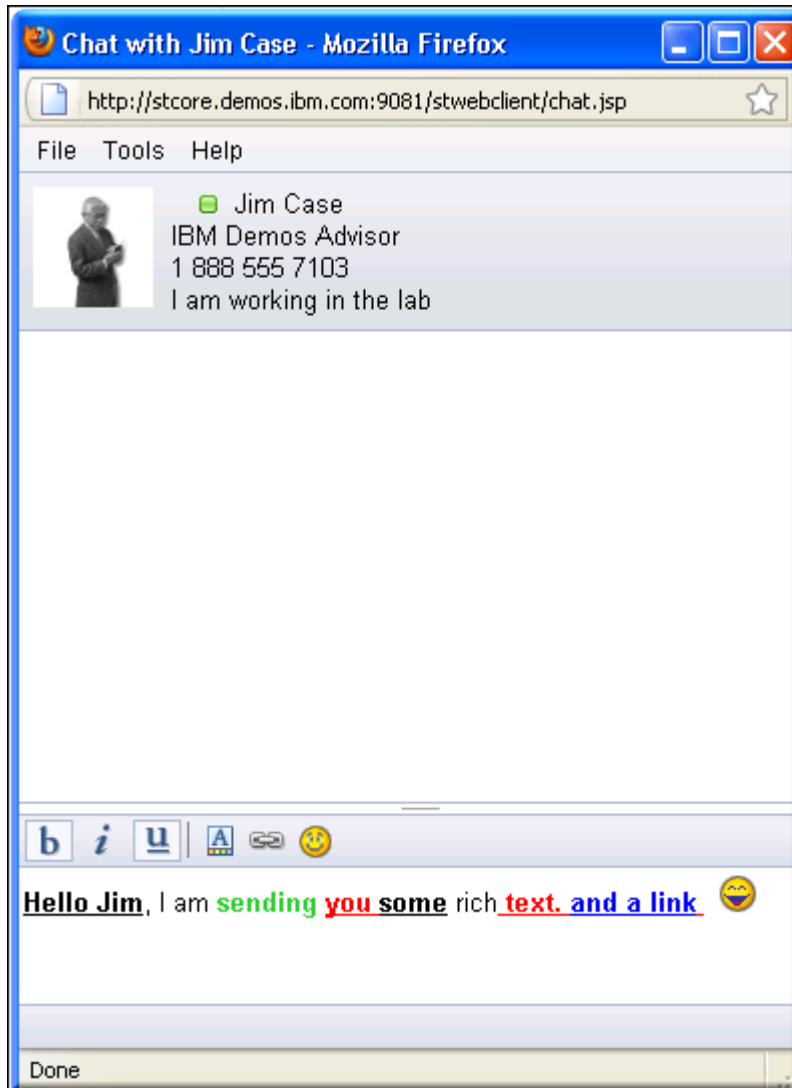
- __11. Immediately you get a business card with information about your contact. In this case, we see that Jim Case is offline, but we have his email address information, and his phone number.



- __12. Once Jim comes online (or your lab partner does), we can see that more options appear when we right click on the name. We can chat, invite to a meeting room, send an announcement, view the business card, edit the nickname and remove the contact from the list.



- ___13. Let's start a chat. By double clicking on the name in the contact list, a chat window appears. Notice the features available. We can use rich text to mark up our conversation. We also have access to emoticons and the ability to send links. Look at the picture below and try a similar markup.



- ___14. Something you might want to notice at this point is that the page location shows what the application really is: a JSP page. Right click on the chat display area in the top pane and choose "view page source". In this source you can see that this is just using Dojo®, JavaScript and CSS to make this client. One point about this is that these stylesheets can be changed to give the client a custom look/feel without changing the application itself.



```

Source of: http://stcore.demos.ibm.com:9081/stwebclient/chat.jsp - Mozilla Firefox
File Edit View Help

<link rel="stylesheet" type="text/css" href="/stwebclient/dojo 1.2.3/sametime/themes/WebClientAll.css" />
<script type="text/javascript" src="/stwebclient/dojo 1.2.3/dojo/dojo.js"></script>
<script type="text/javascript" src="/stbaseapi/baseComps.js"></script>
<script type="text/javascript" src="/stwebclient/chatPart1.js?setBiDi=true"></script>

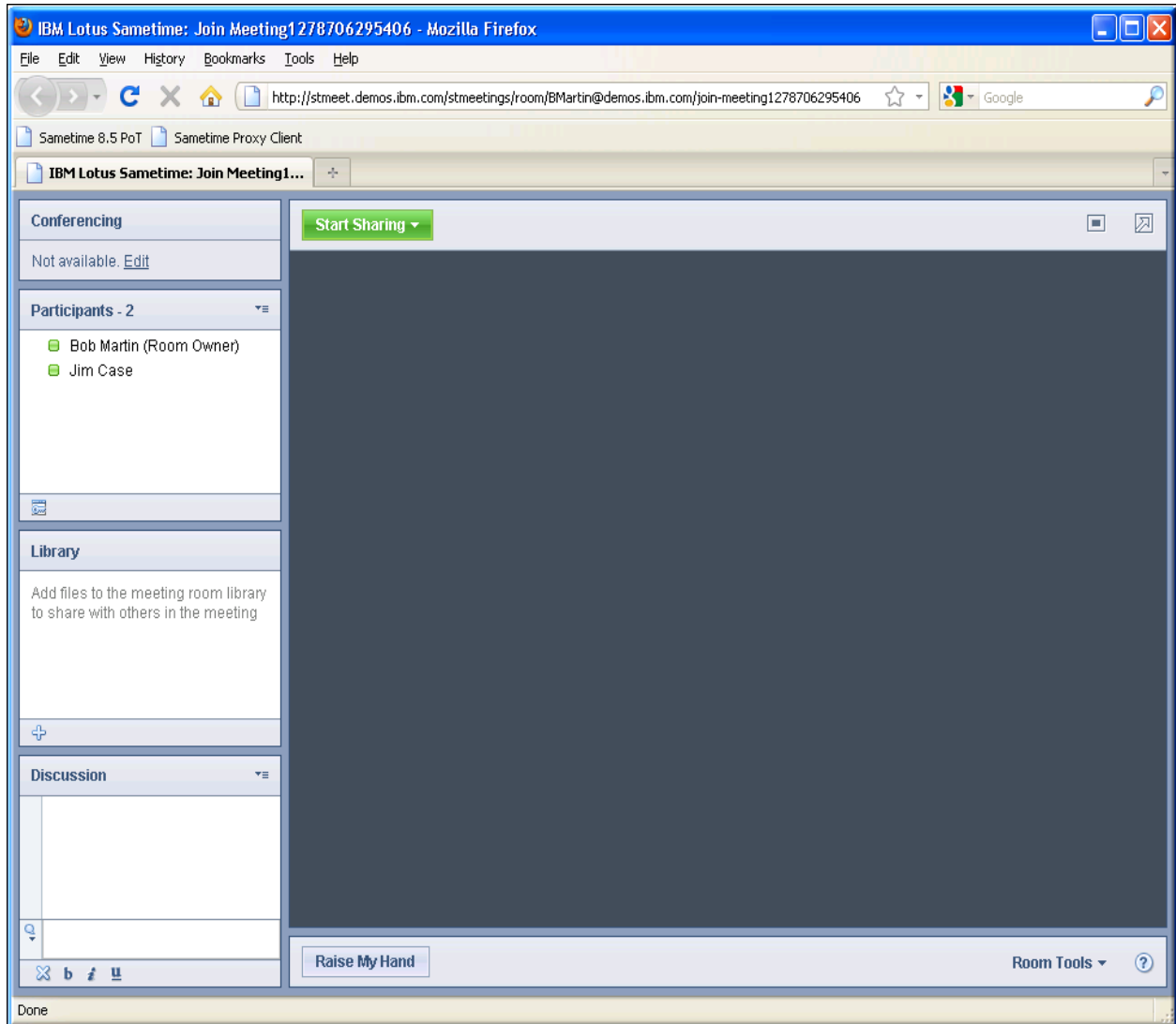
<title></title>
<style>
    html, body {
        height: 100%;
        width: 100%;
        margin: 0;
        padding: 0;
        overflow: hidden;
    }
</style>

```

- ___15. Close the source window and return to the chat window. From the menu bar at the top, choose **File-->Invite to Meeting Room**.

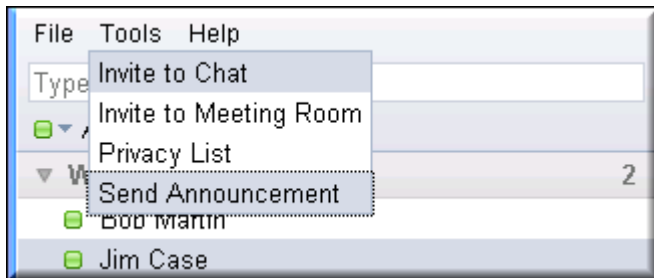


- ___16. The client appearance changes to the **Invite to Meeting Room** view. Click on **Invite**. Note: if you are working with another lab person, take turns at this. A new window should open showing the meeting room from the Meeting server. You may have popups blocked and may need to allow them for the server name.

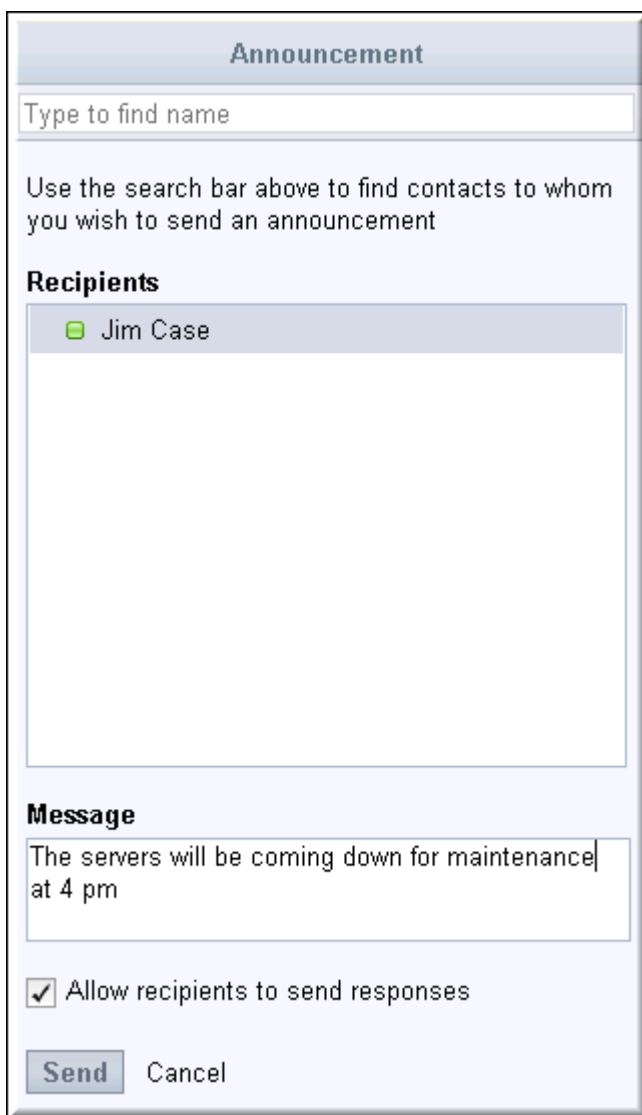


- ___17. You are now in the meeting room application. Again, this is a Web 2.0 application using Dojo, JavaScript and HTML. No installation is needed. The LiveNames in the participants list is supplied by the Sametime Proxy server while the meeting room comes from the meeting server.
- ___18. Play around with the room to see how it feels by adding a file or sharing your screen. When done, close the meeting room window. Also close the chat window, leaving only the client open.

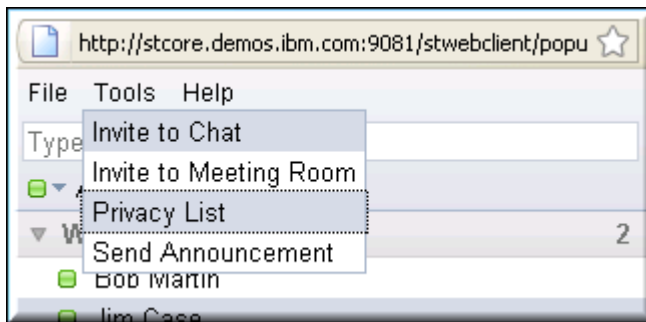
- __19. Another useful tool is the ability to send announcements to users. In the Menu bar under tools, select **Send Announcement**.



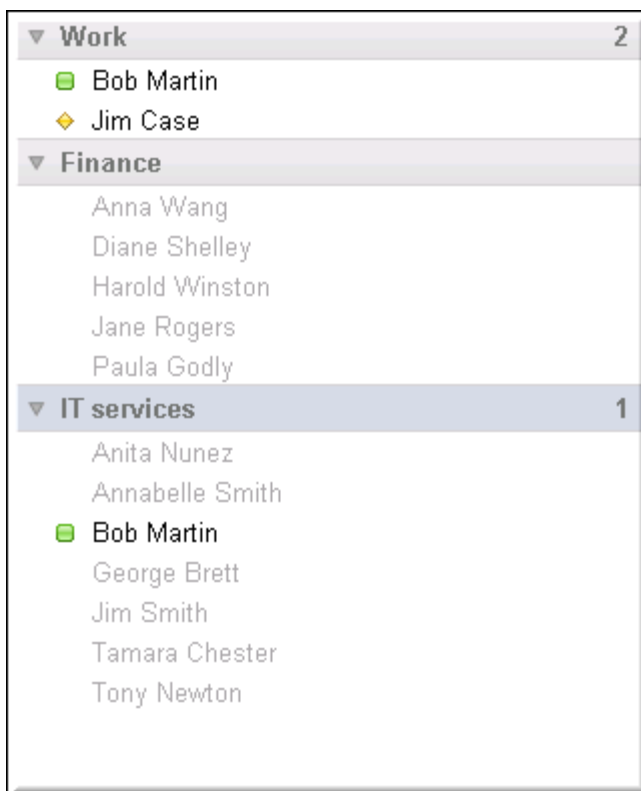
- __20. The announcements tool makes it easier to send information to many individuals about important events. Try sending an announcement.



- __21. Another thing to try is to set your privacy list. Privacy lists allow you to select who can see you online. You can be inclusive or exclusive. This may be useful if you are working on a project with a group of people and wish only to be disturbed by other project members.



- __22. Try adding the person on your right to the privacy list. Keep in mind that privacy is symmetric. If you disallow someone to see you online, then you can no longer see them online either. No lurking is allowed.
- __23. For the last item, try adding some groups to your contact list. If you add personal groups, then you can pick and choose who you want to be in your list. You can even nest the groups to create hierarchies. There is also an option to add public groups. Public group membership is based off of who is in the group in the directory and can change based off membership. Try adding the Finance, IT Services, Marketing, Customer Services, or Human Resources groups to your contact list to see who in the lab is online.



4.2 Lab 4 Review

In this lab we have covered the Sametime Proxy Webclient. We have connected to a Sametime Community through the Sametime Proxy and examined the many features and tools associated with chat/awareness/meetings. We have also used the privacy and announcement features as well as explored the use of groups.



© Copyright IBM Corporation 2010.

The information contained in these materials is provided for informational purposes only, and is provided AS IS without warranty of any kind, express or implied. IBM shall not be responsible for any damages arising out of the use of, or otherwise related to, these materials. Nothing contained in these materials is intended to, nor shall have the effect of, creating any warranties or representations from IBM or its suppliers or licensors, or altering the terms and conditions of the applicable license agreement governing the use of IBM software. References in these materials to IBM products, programs, or services do not imply that they will be available in all countries in which IBM operates. This information is based on current IBM product plans and strategy, which are subject to change by IBM without notice. Product release dates and/or capabilities referenced in these materials may change at any time at IBM's sole discretion based on market opportunities or other factors, and are not intended to be a commitment to future product or feature availability in any way.

IBM, the IBM logo, ibm.com, DB2, Domino, Lotus, Lotus Notes, Sametime, and WebSphere are trademarks or registered trademarks of International Business Machines Corporation in the United States, other countries, or both. If these and other IBM trademarked terms are marked on their first occurrence in this information with a trademark symbol (® or ™), these symbols indicate U.S. registered or common law trademarks owned by IBM at the time this information was published. Such trademarks may also be registered or common law trademarks in other countries. A current list of IBM trademarks is available on the Web at "Copyright and trademark information" at ibm.com/legal/copytrade.shtml

Other company, product and service names may be trademarks or service marks of others.



Please Recycle
