



IBM Software

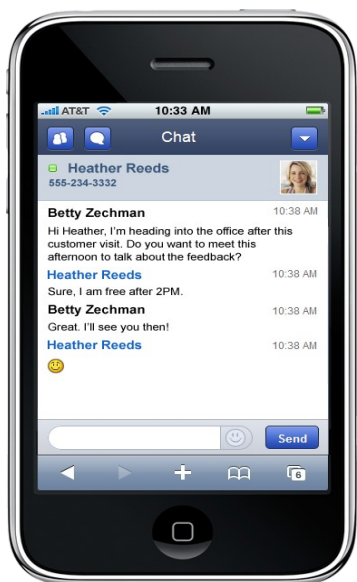
Lotus Sametime Mobile

An IBM Proof of Technology



Introduction

- Sametime Client for Smart Phones, which extends your current Sametime infrastructure reach to mobile devices
- An optimized web client browser interface for iPhone/iPod Touch
- Integrated with your existing Sametime environment, sharing Buddy List and Awareness
- Configured out-of-the-box with no additional software to install on the server
- Customizable using Sametime Policies



Capabilities



- Wireless instant messaging
- Contact List and Business Cards
- Quick Find
- Single/Multiple Chat
- Chat History
- Status Alerts
- Announcements
- UC²
 - Extendable plug-in architecture
 - Windows Mobile v6 (Professional and Standard)

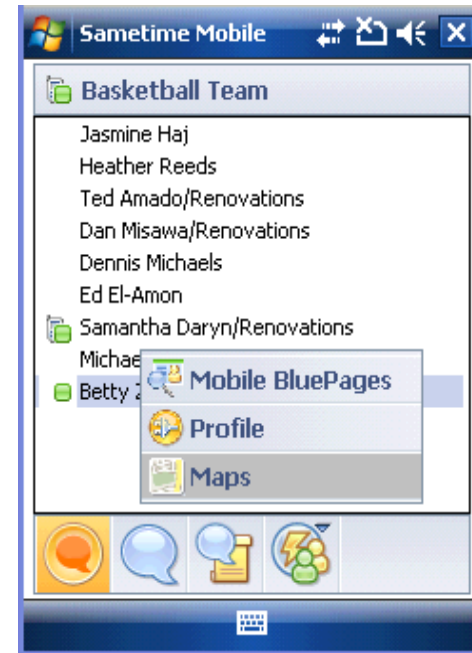
Device Support



- iPhone, iPhone 3G(S), iPod Touch web client application
- Blackberry – 7100, 8100, 8700, 8800 Series, 8300 series, Storm, Bold. Note: RIM offers their own version of ST client called BlackBerry Client for Lotus Sametime, part of BlackBerry Enterprise Messenger Family.
- Nokia E-Series – E50, E51, E60, E61(i), E62, E65, E70, E75, E90
- Sony Ericsson – M600, P990i, P1i
- Windows Mobile – 2003 SE, WM5 Smartphone, WM 6, WM 6.5 Standard/Professional

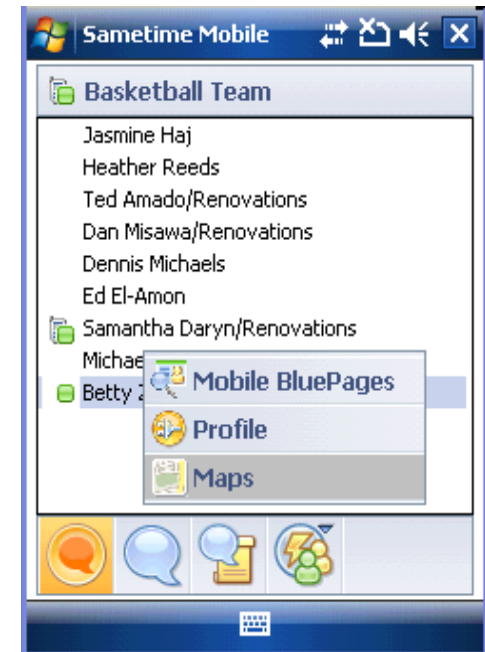
Sametime UC² Client

- Based on latest IBM Lotus Expeditor for Devices 6.2.1
- Support for Windows Mobile
- Open embedded Rich Client Platform (eRCP)/OSGI platform for allowing third party plug-ins, similar to desktop Sametime



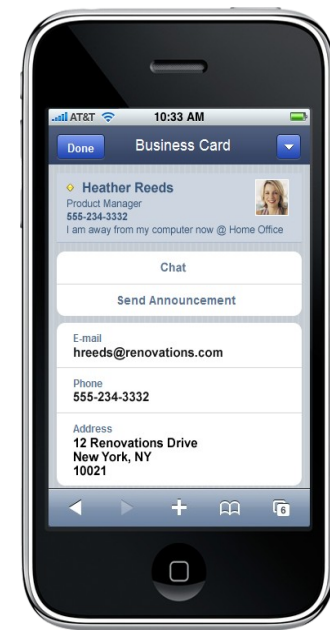
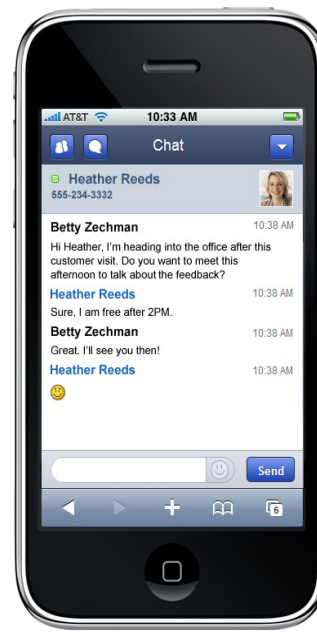
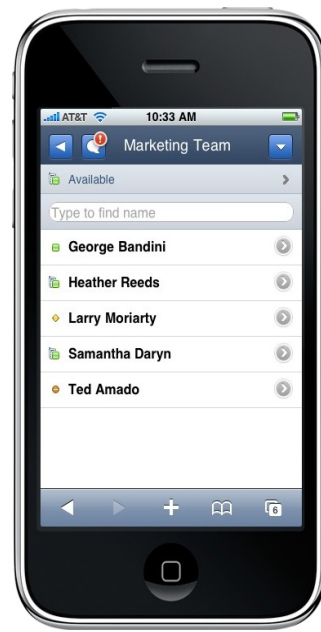
Lotus Sametime UC² Mobile Plugins

- With plugins third parties can add
 - Menu options
 - Views
 - Actions
- Some sample Lotus Sametime UC² plugins
 - Show profiles of contacts in proprietary company directories or public sites like Facebook
 - Process of chat text, like language translations and text to speech
 - Show physical location of contact on a map
- Plugins can use native device APIs with Java Native Interface (JNI)

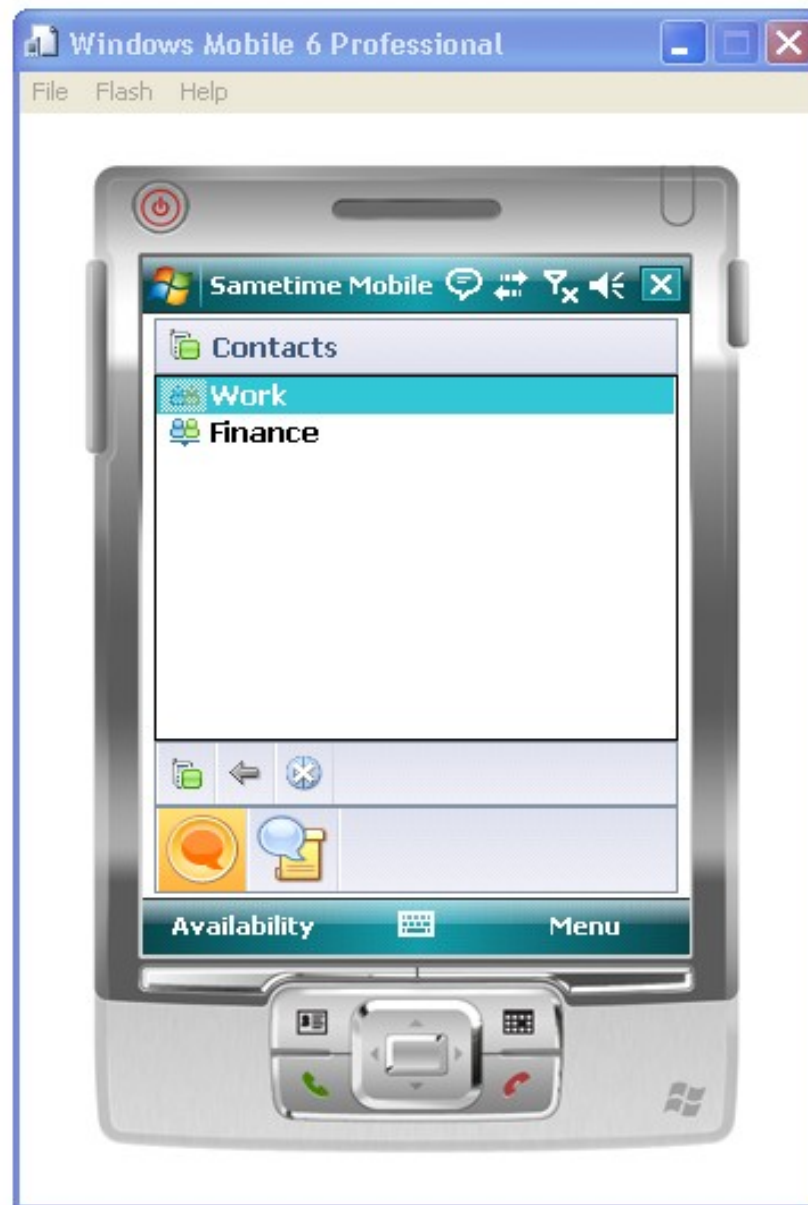
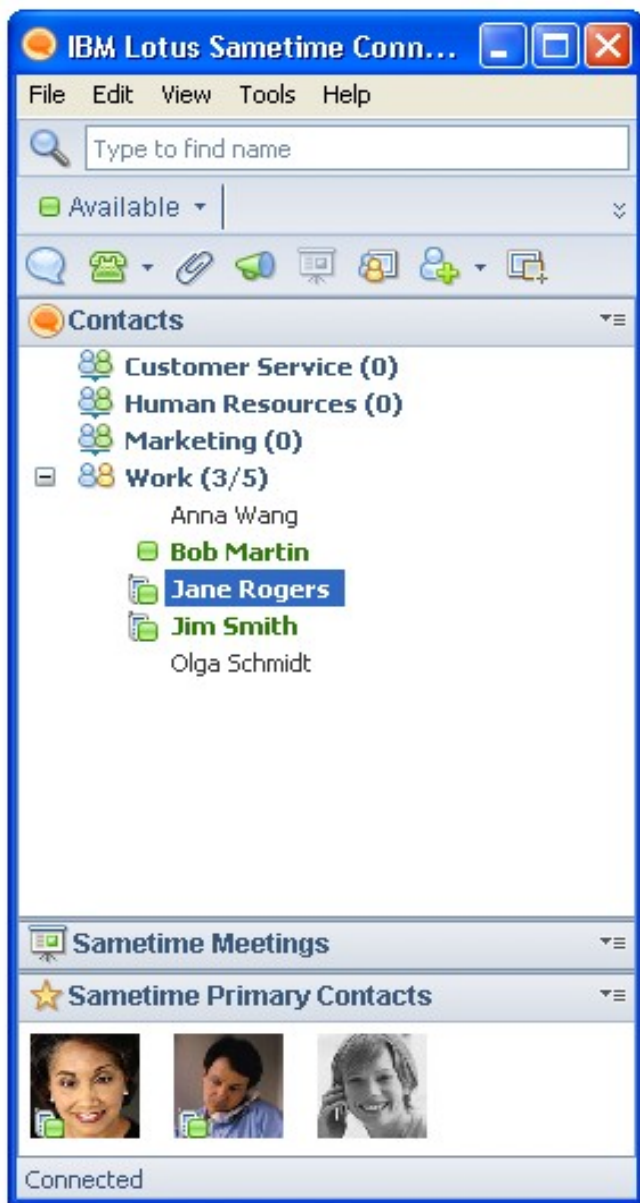


Sametime Web Client for iPhone

- Optimized for iPhone, iPhone 3G, iPhone 3Gs, and iPod Touch
- Uses the device browser
- Features include contact list with presence, single and multi-chat, business cards, click to call/email, announcements, contact and group management, mapping
- No background chat notifications



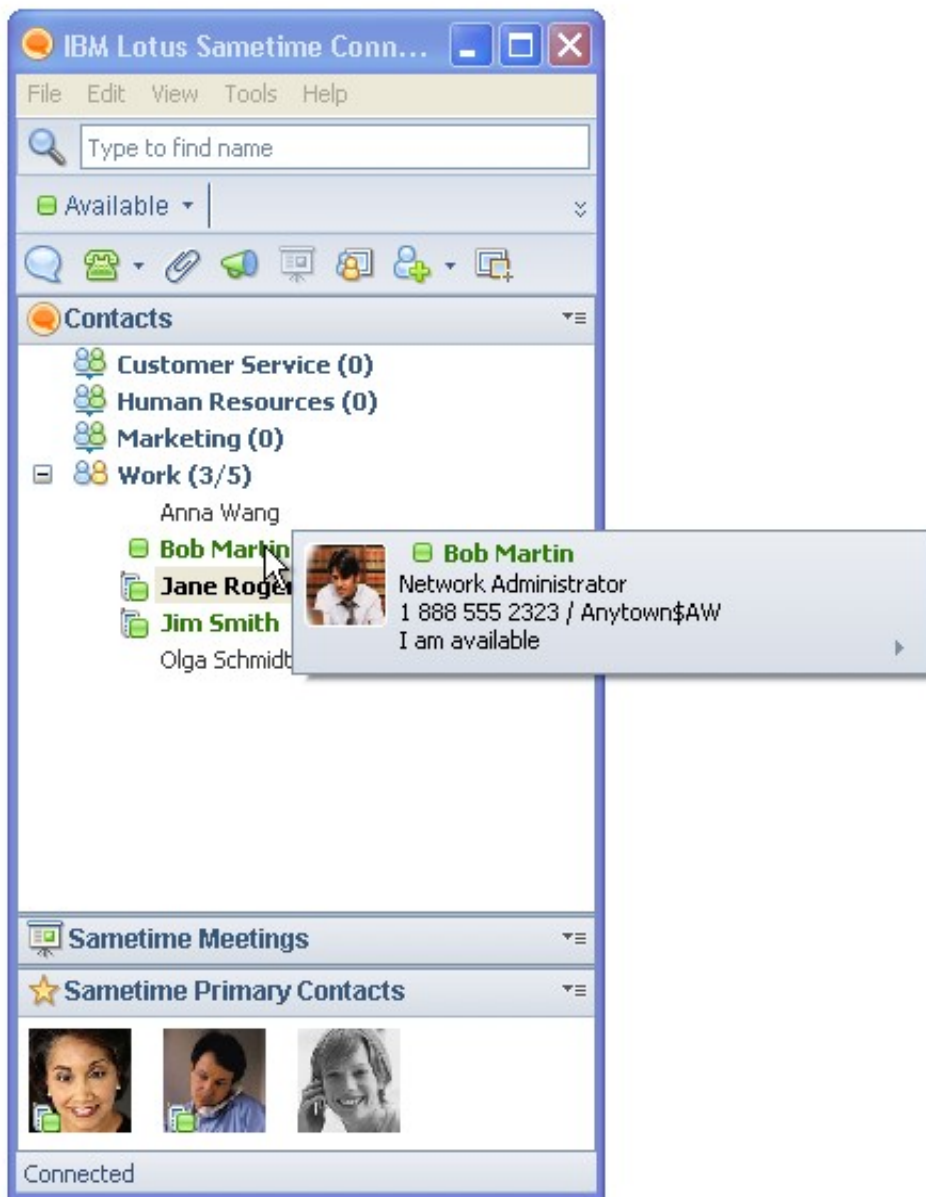
Features – Buddy List



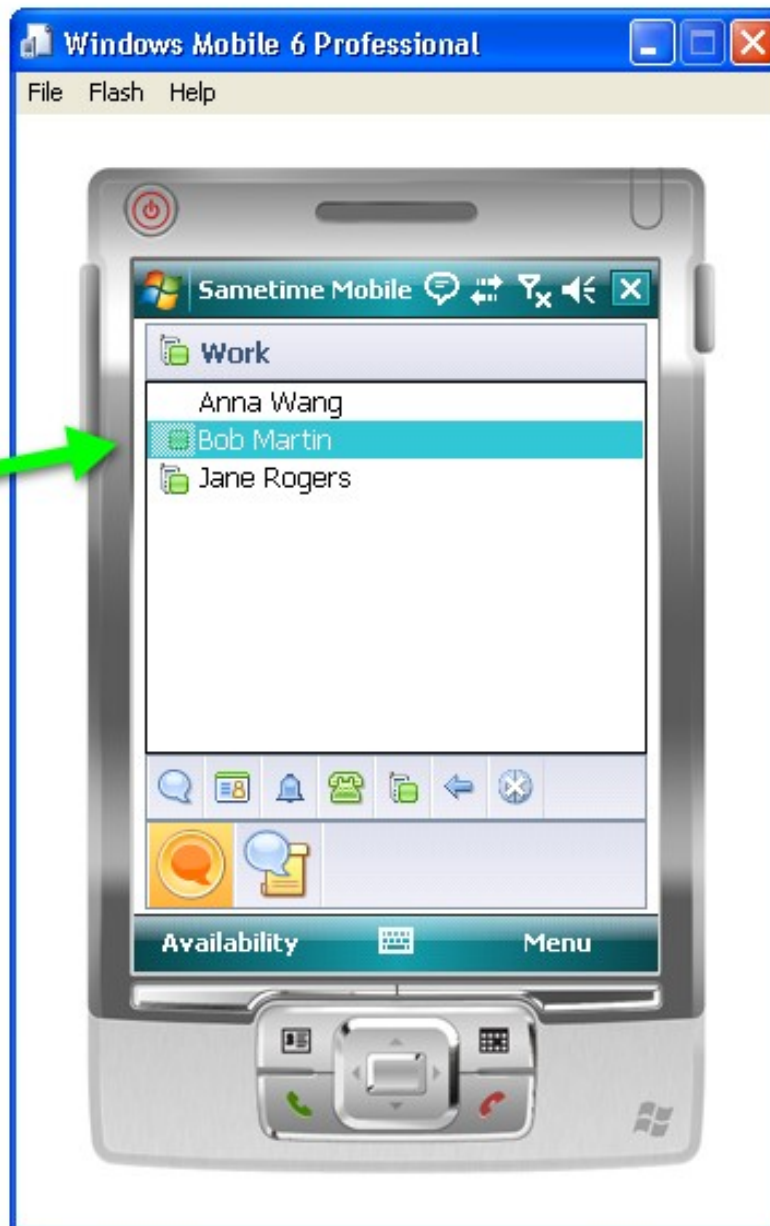
Buddy List - (Continued)



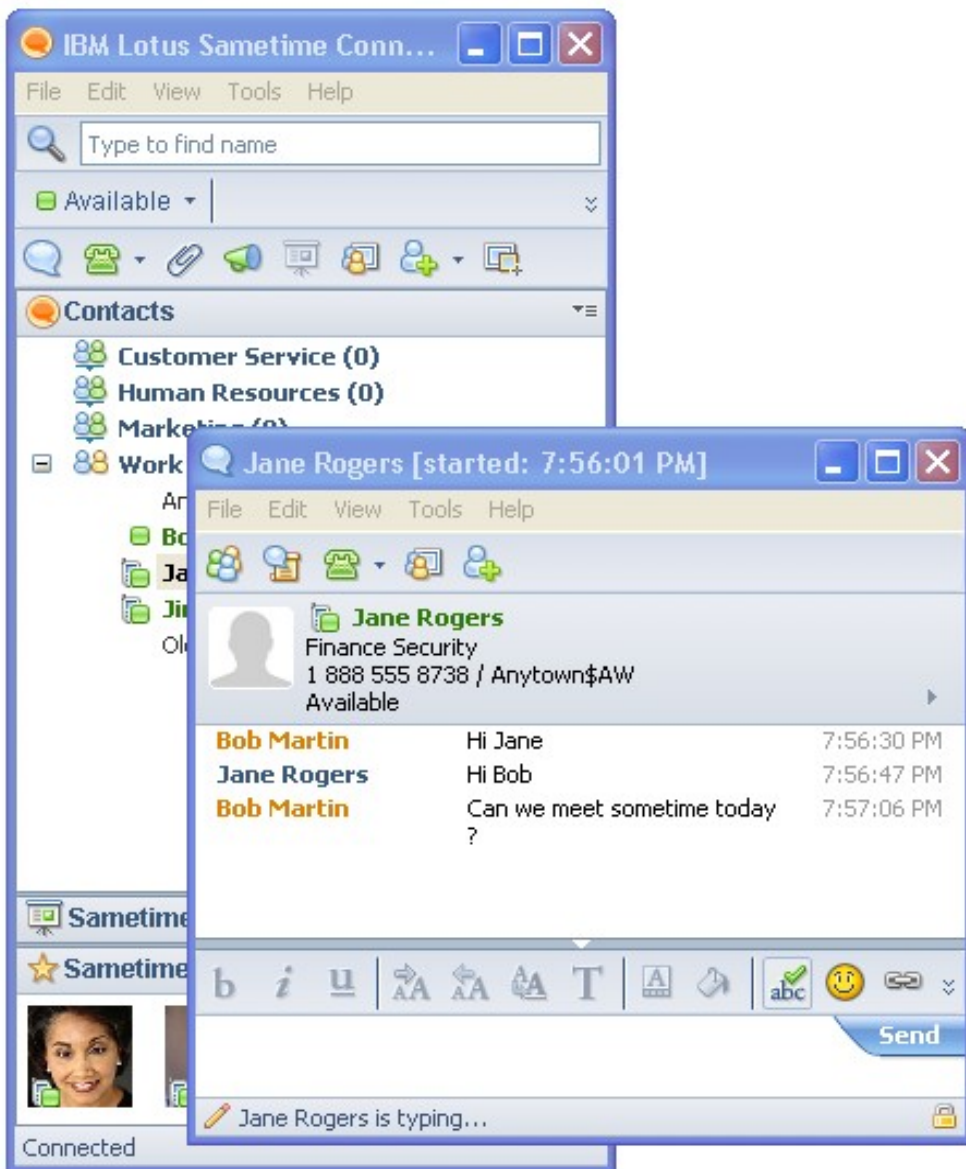
Business Card



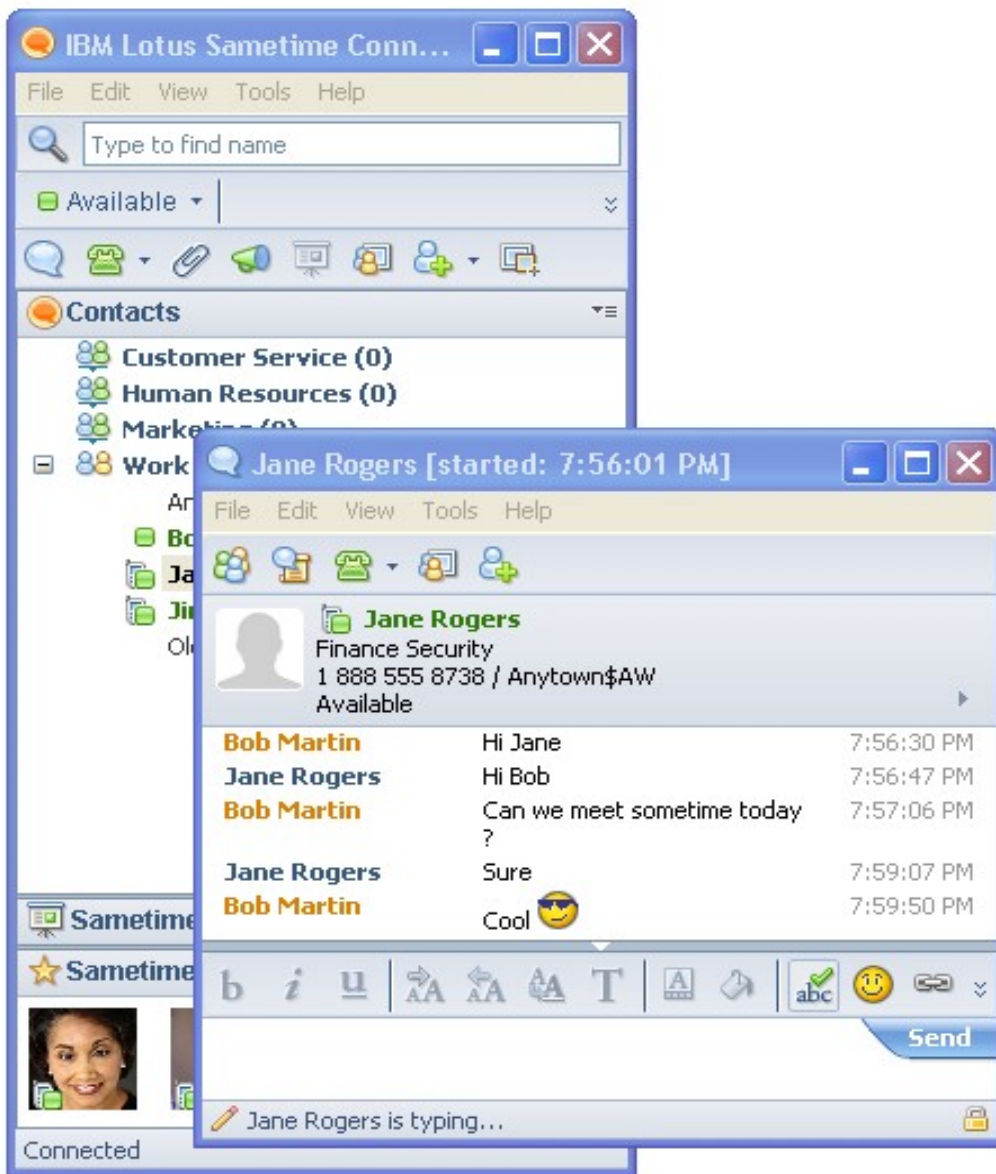
Chat



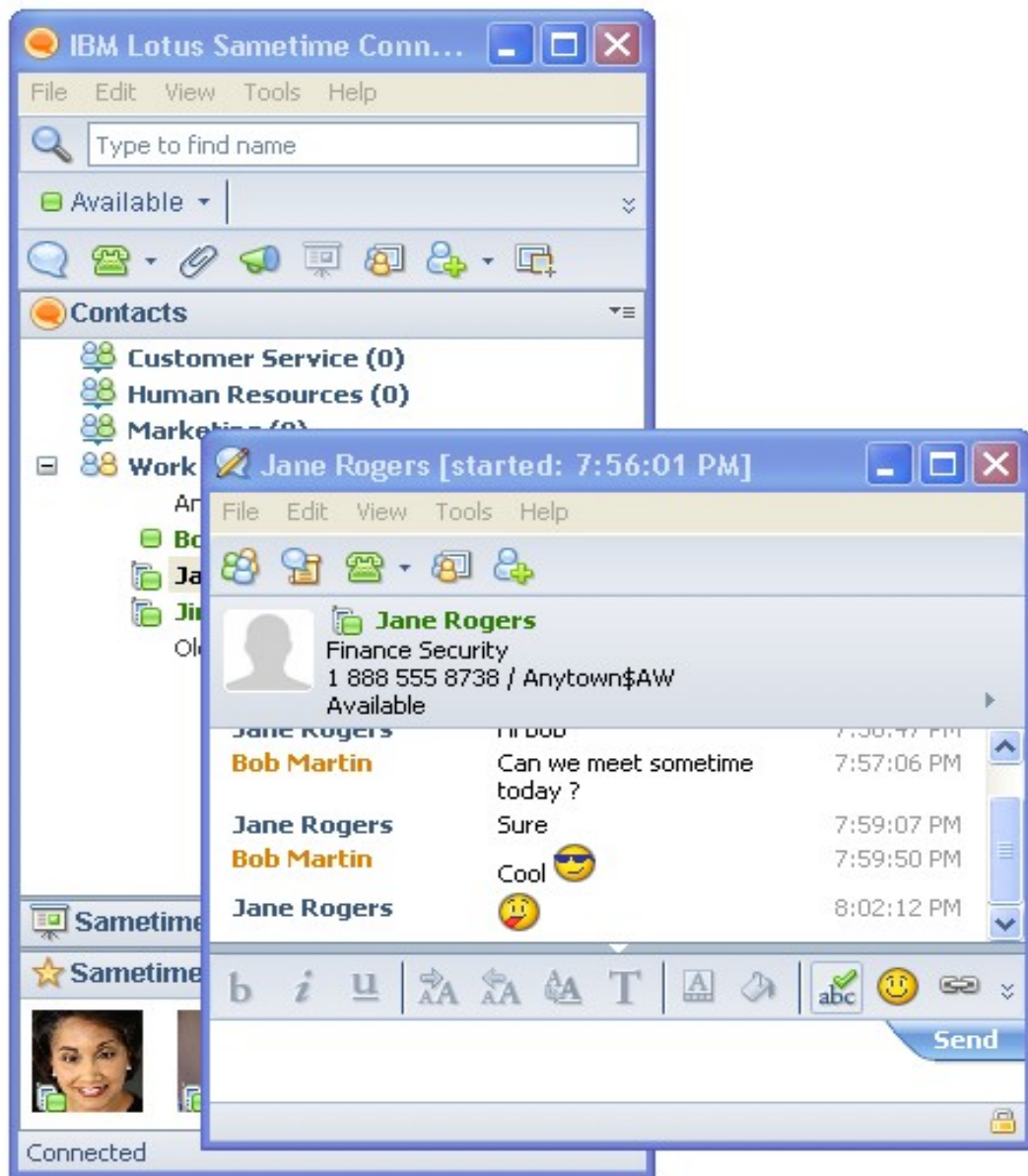
Chat ...



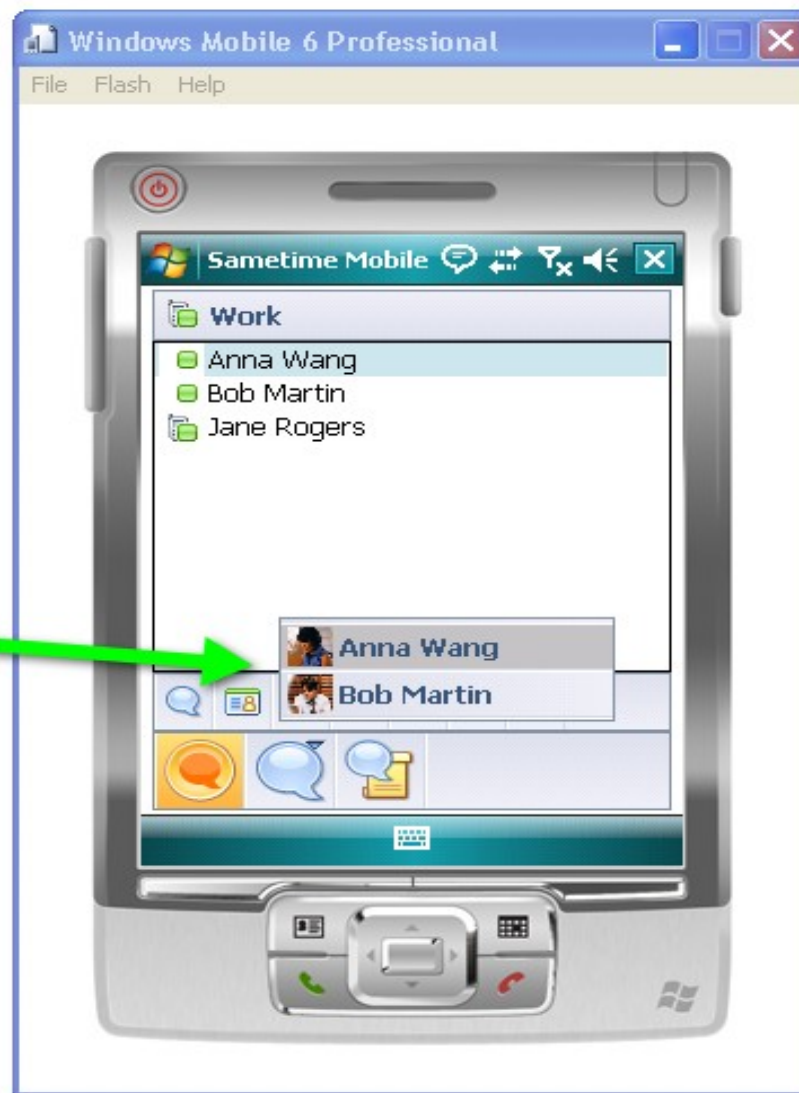
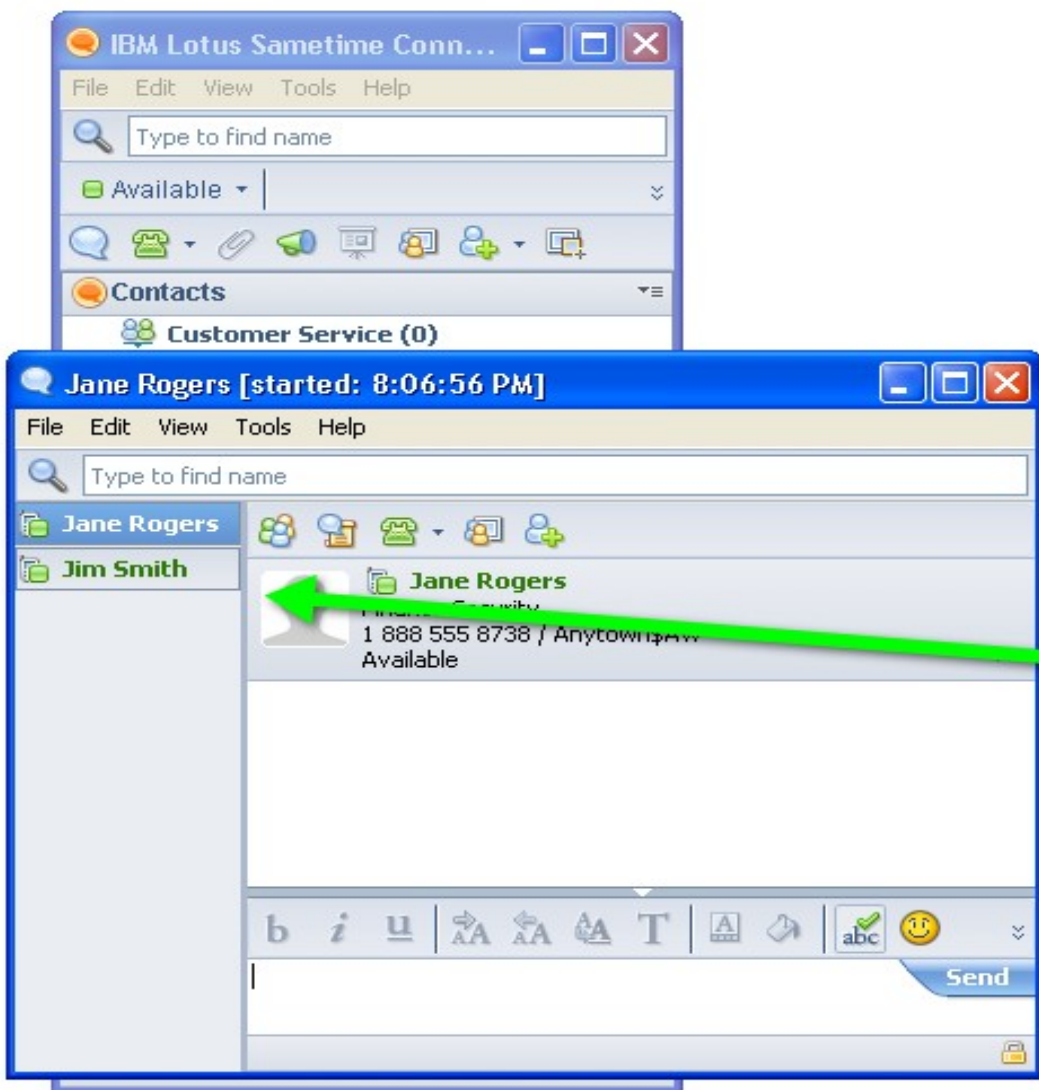
Emoticons



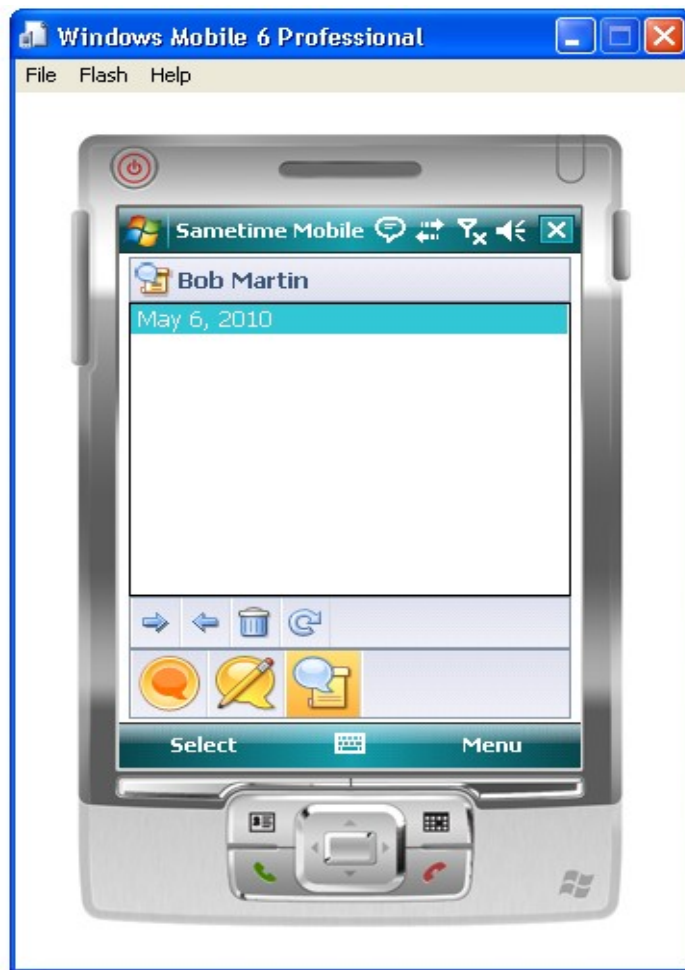
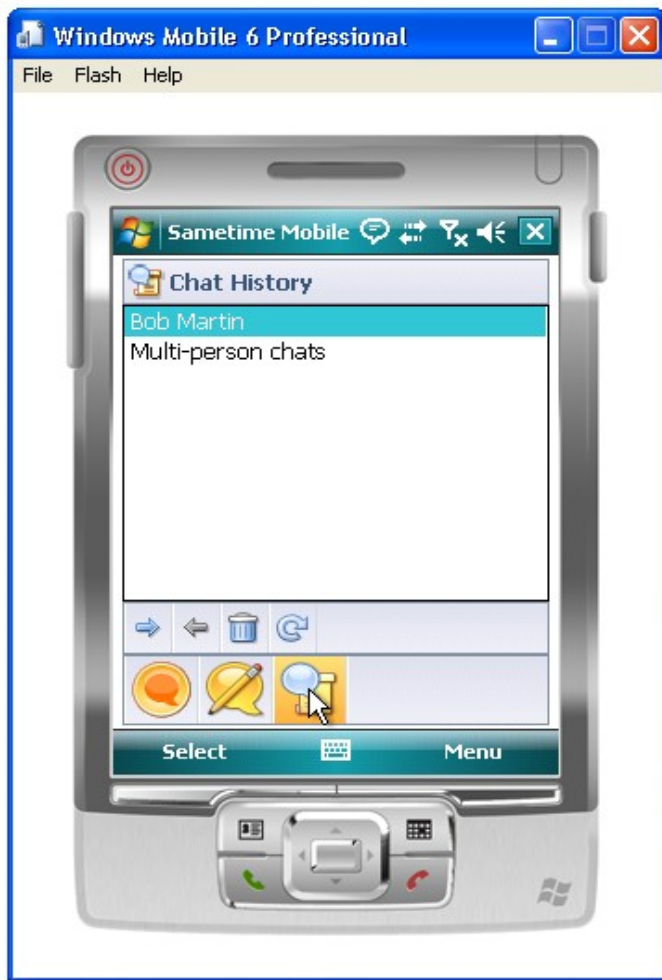
Emoticons ...



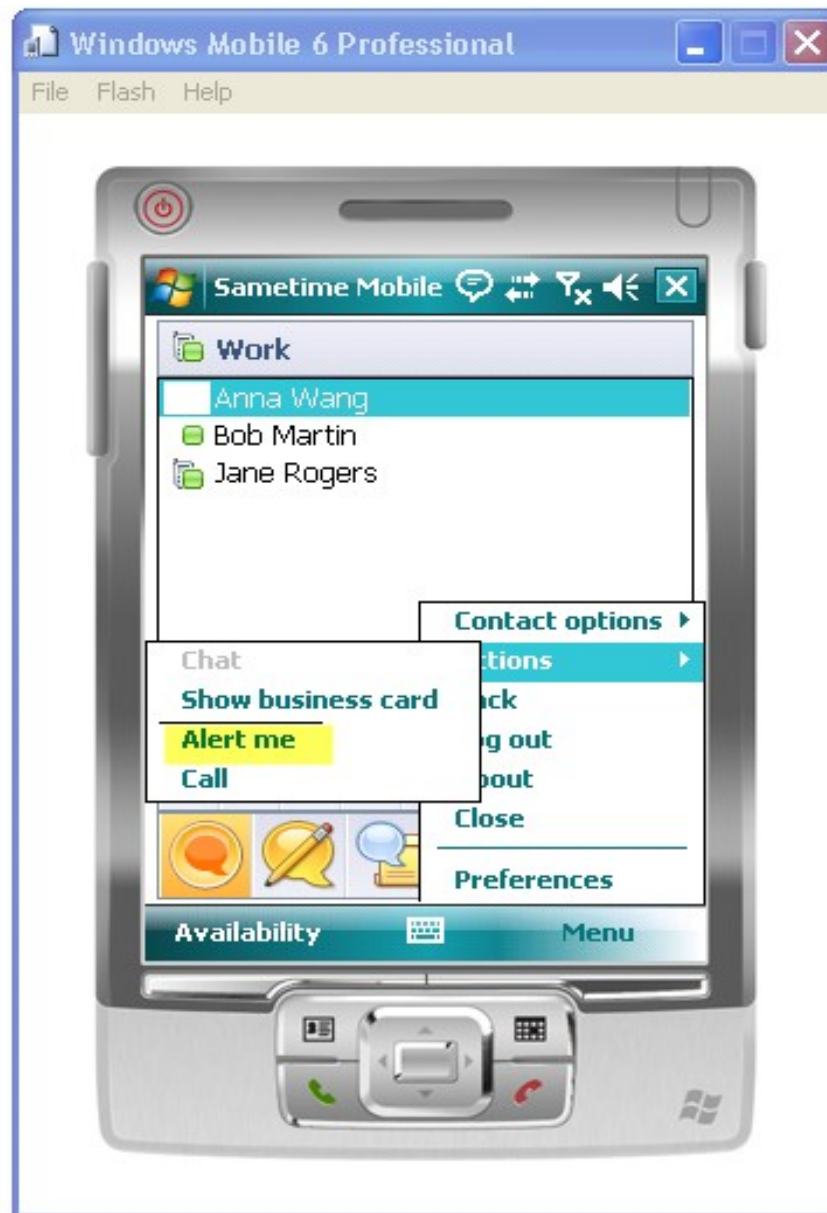
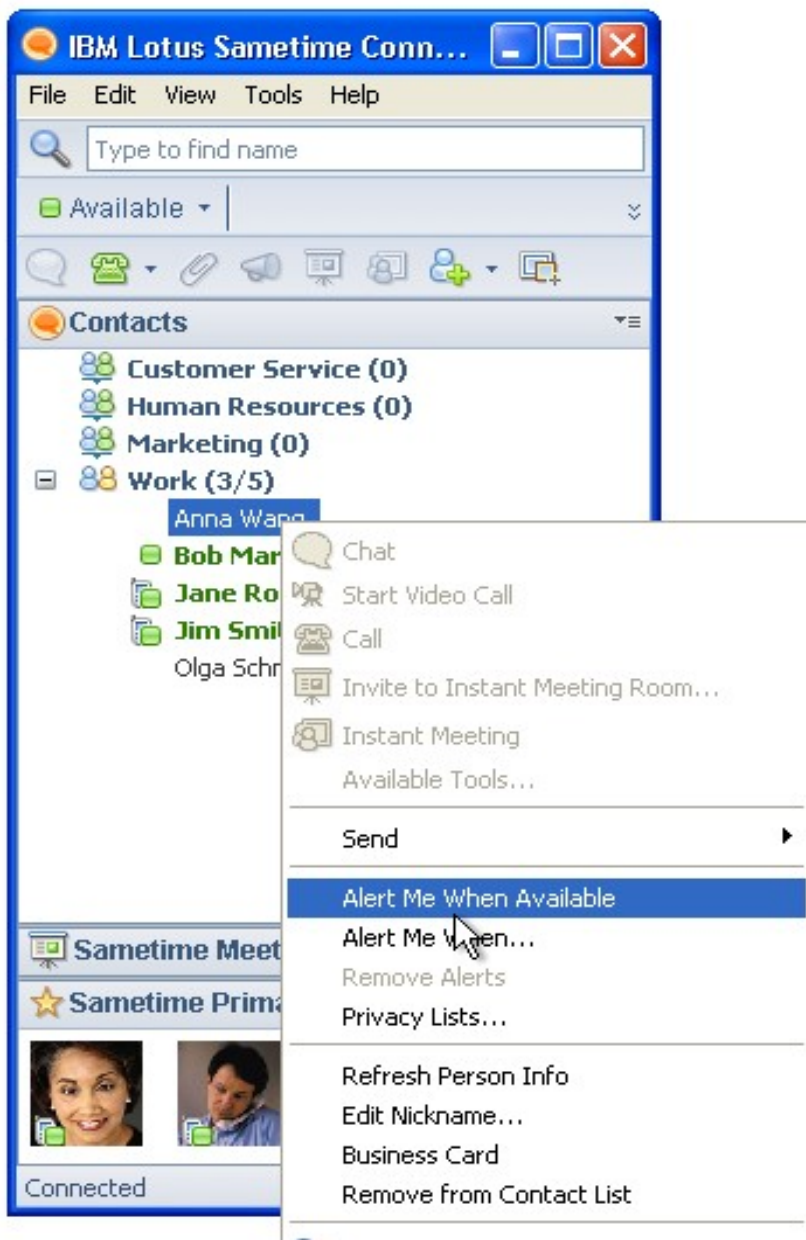
List of Active Chats



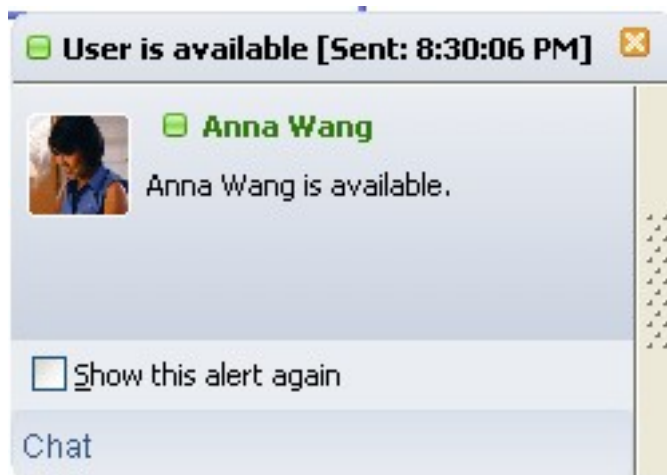
Chat History



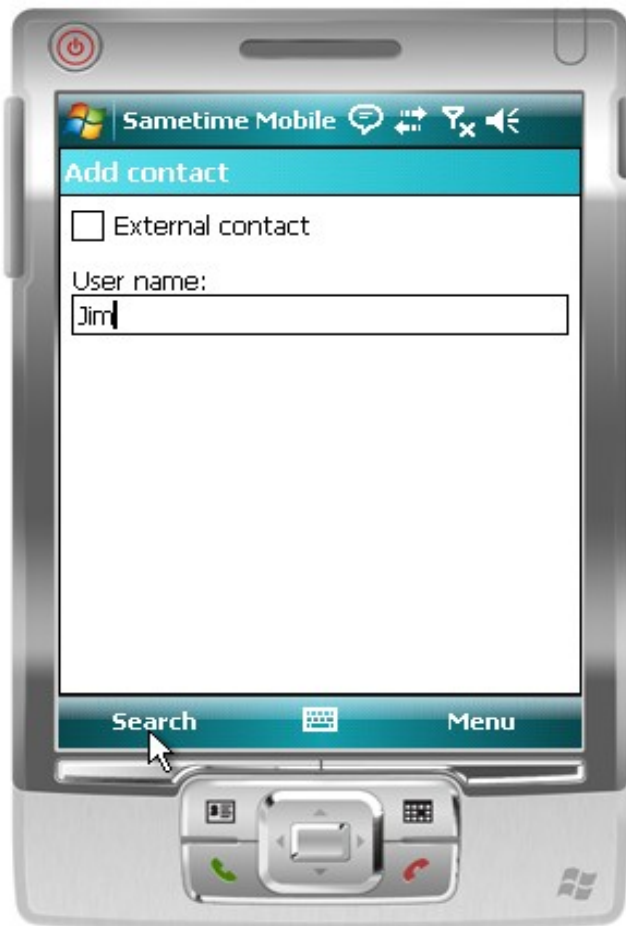
Alert Me



Alert Me



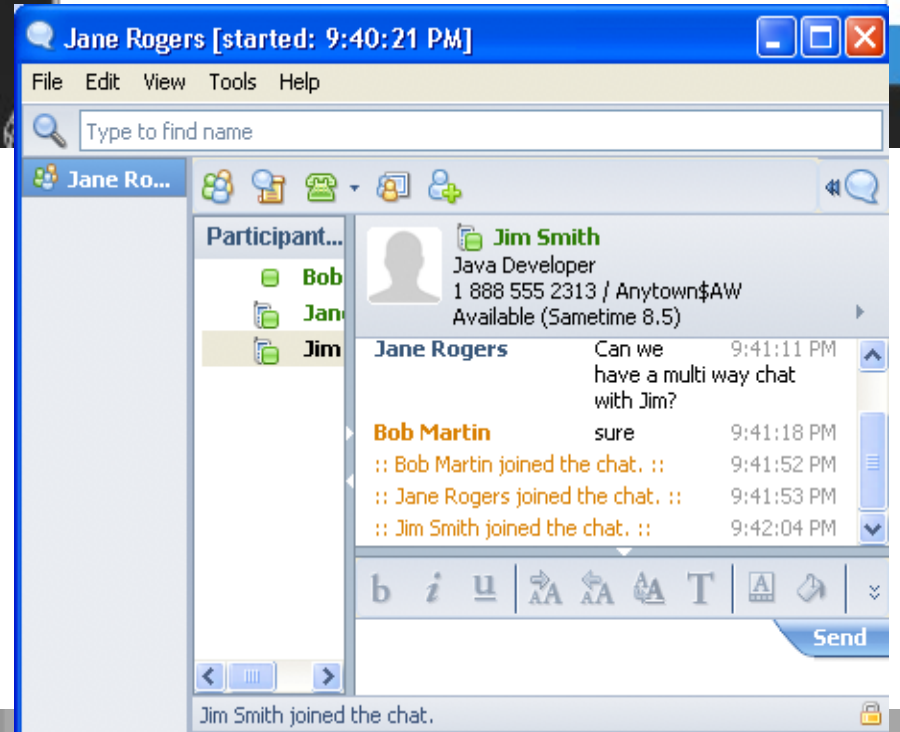
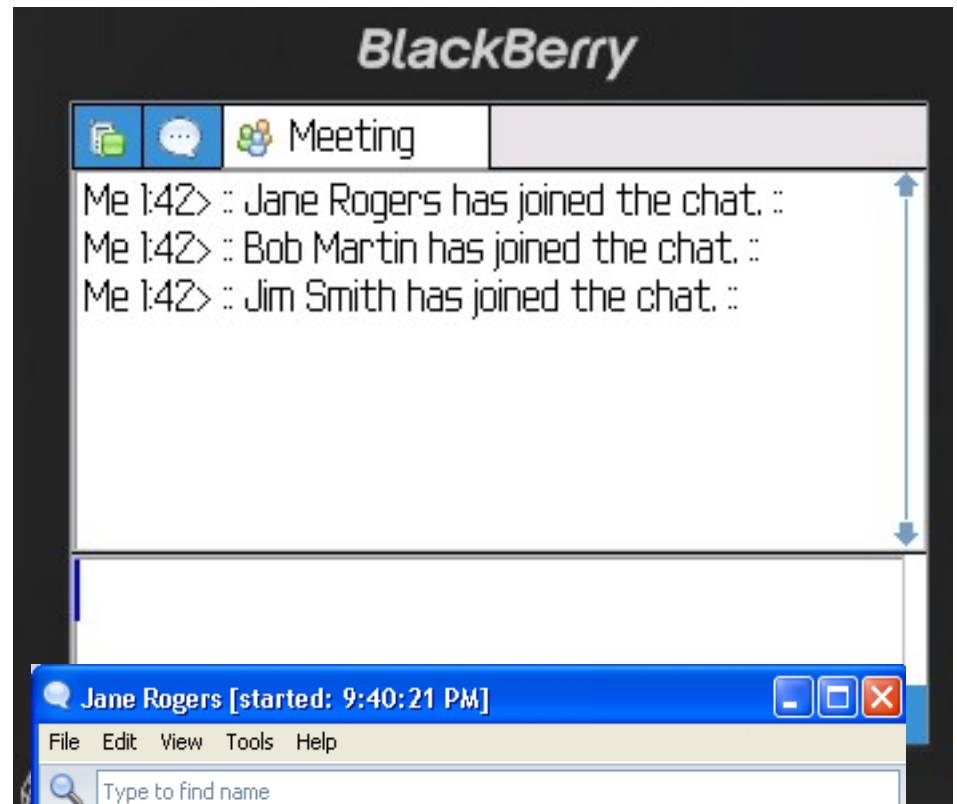
Adding Contact



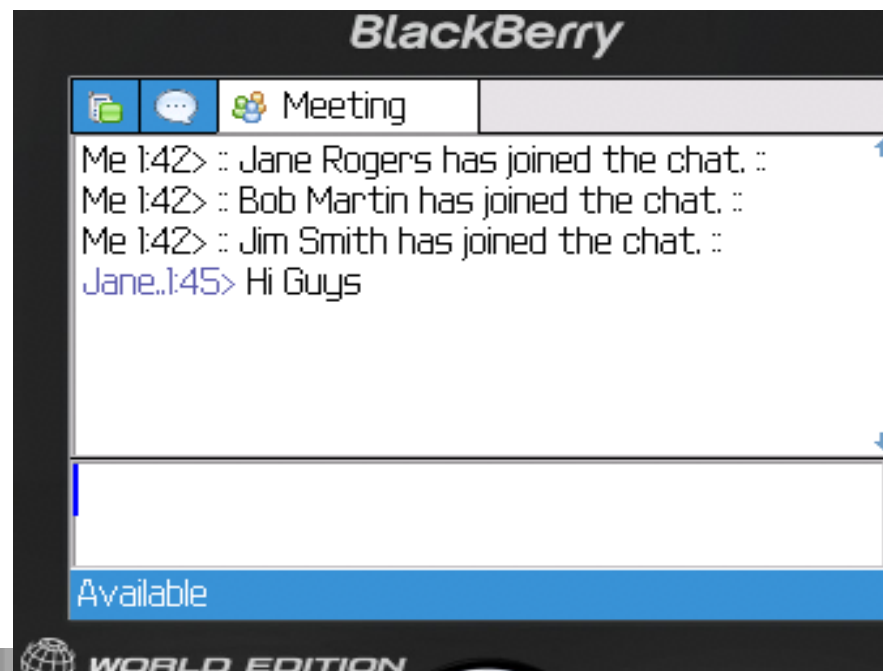
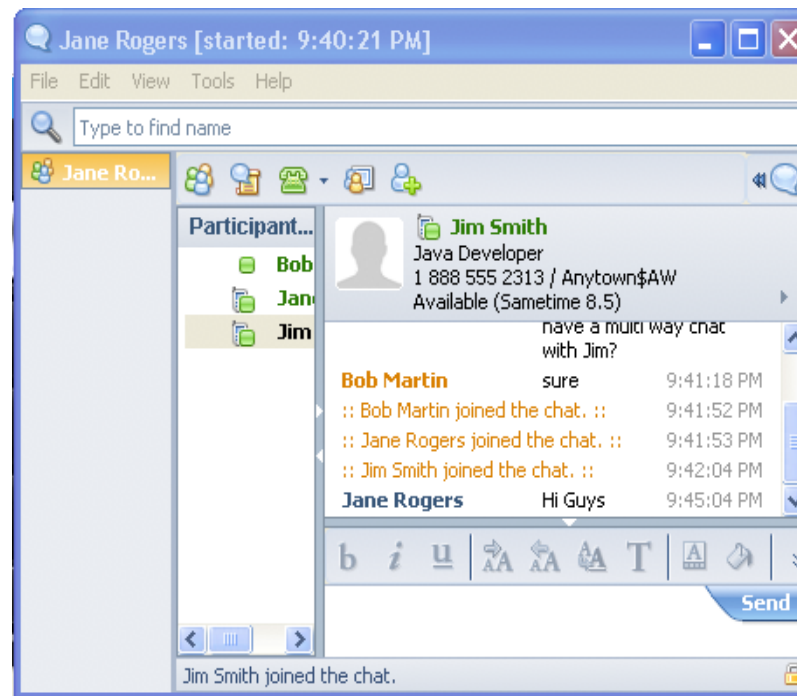
Multi-way chat - initiating



Multi-way Chat ... Confirmation



Multi-way Chat ... Conversation



My Status



Deployment

- For Windows Mobile, Blackberry, Nokia and Ericsson devices, a client code needs to be download and installed on the phone
 - ▶ The Sametime server can be configured so that user can download the client directly
 - ▶ Device initial configuration can be configured centrally on the Sametime server using the Sametime Administration Tool.
- For iPhone and iPod Touch device, there is no additional software required to be install on the device. Sametime is accessed using the browser. However, access to the Sametime server is done through the Sametime Proxy Server.
- For additional security Lotus Mobile Connect can be use in conjunction with Sametime Mobile
 - ▶ Lotus Mobile Connect extends the enterprise network to the mobile device
 - ▶ Lotus Mobile Connect provides client for Windows Mobile, Nokia and Ericsson devices.
 - ▶ Lotus Mobile Connect client-less option can use to secure iPhone/iPod Touch access to Sametime Proxy



Summary

- Sametime mobile extends the reach of enterprise IM to mobile devices
- Core IM features are consistent between the desktop client and a variety of mobile clients. Users can still reach other users whenever they are logged in using whatever device.
- Lotus Mobile Connect can be used to provide extra security.
- Sametime Mobile does require Sametime Standard or Advanced license



Questions

